

GOLDEN FUTURE



EMBRYO SALE

Hosted by GMS

October 28, 2023 on [Cowbuyer.com](https://www.cowbuyer.com)

GOLDEN FUTURE EMBRYO SALE

hosted by Guernsey Marketing Service

October 28, 2023 on Cowbuyer.com

Bidding closes 8:00pm EST on October 28.

- All sales are final.
- Payment is due at the end of the sale.
- A 3% convenience fee will be charged for all credit card payments.
- Confirmation of payment will be sent to consignor and purchaser within one week of sale.
- No embryos will ship prior to a full payment being received.
- Buyer is responsible for the coordination, cost, and liability of shipment.
- All embryos are for domestic shipment only unless otherwise specified.
- Final bid must meet the seller's reserve price to be considered sold.
- Check each lot for additional terms.

Sales Staff

Guernsey Marketing Service

Robin Alden 614.339.5390

ralden@usguernsey.com

Payment - Guernsey Marketing Service

Rita Rittgers 614.339.5396

accounting@usguernsey.com

Monday - Thursday, 9:00am - 2:00pm EST

Cowbuyer

Aaron Ray Tompkins 336.363.4639



**View and bid online at
www.cowbuyer.com**

Aaron Ray Tompkins 336.363.4639



Buyers must be pre-registered.

Auction opens the week of Oct. 23 and closes

Oct. 28 with an auto-extend soft close.

Contact Robin Alden if you are unable to monitor the auction during this time:
614.339.5390 | ralden@usguernsey.com



Diva!

Unanimous All-American Aged Cow 2018
 Unanimous All-American Lifetime Production Cow 2021
 Member, All-American Dam & Daughter 2018 & 2021
 Reserve All-American Four-Year-Old 2016
 Honorable Mention All-American Five-Year-Old 2017
 Nominated All-American Junior Three-Year-Old 2015
 Grand Champion NGS-Louisville 2018
 Reserve Grand Champion NGS-Madison 2018
 Dam of DRONE - Premier Sire 2023 World Dairy Expo!

Hi Guern View Dancing Diva-ET EX-96
 203,180M 4.6% 9,322F 3.6% 7,296P Lifetime
 Dam of Lot 1; Granddam of Lot 2

LOT 1 4 #1 VERNON X DIVA IVF EMBRYOS

Breeder & Owner: DINDERMAN ALAINA, AMERY + AIDAN
ORANGEVILLE IL

815.297.4111 hiayview@hotmail.com

PA: -51M +0.08% -11F +0.06% +9P +107CM\$ +102NM\$
 +1.2PTAT +1.5UDC +1.8FLC -0.3DPR +1.7PL +59CPI 3.03SCS

RHG VILLA LONDON VERNON-ETV 840003213010574 094GU0960 A2A2

08/23 USDA GPTA +408M +0.10% +36F +0.05% +23P
 -0.3DPR +1.3PL +305NM\$ 80NM%ile +311CM\$ 58% Rel
 2.99SCS 0.50HCR 30% Rel -0.60CCR 36% Rel
 -0.60LIV 31% Rel 0.60GL 42% Rel -1.00EFC 31% Rel
 AGA 08/23 PTAT +1.2 +1.5UDC +2.8FLC 57%Rel PTI +112

HI GUERN VIEW DANCING DIVA-ET USA000068047311 A2A2

08/23 USDA GPTA -509M +0.05% -15F +0.06% -6P
 -0.3DPR +2.0PL -101NM\$ 16NM%ile -98CM\$ 77% Rel
 3.07SCS -1.90HCR 41% Rel -0.50CCR 53% Rel
 1.70LIV 42% Rel -0.20GL 57% Rel -3.80EFC 43% Rel
 5 Rec YDev: -110M +12F +20P
 5 App 08/23 PTAT +1.1 +1.4UDR +0.8FLC 75%Rel CPI +6
 Appraisal: EX 96 @ 11-03 (EEEEEE)
 1-11 353D 2X 19070M 4.8% 915F 3.5% 666P 95
 3-01 318D 2X 20010M 4.7% 933F 3.4% 688P 94
 4-00 305D 2X 19030M 4.6% 871F 3.7% 706P 95
 5-04 319D 2X 22670M 4.6% 1034F 3.5% 803P 94
 6-04 305D 2X 22100M 4.3% 957F 3.5% 781P 92
 7-07 305D 2X 25620M 3.9% 1001F 3.5% 897P 94
 8-09 365D 2X 29120M 4.4% 1282F 3.6% 1040P DHIA
 10-06 305D 2X 25290M 4.8% 1205F 3.3% 828P* 96
 3070D 203180M 4.6% 9322F 3.6% 7296P LIFE

Dam of DRONE at St-Jacobs & DJ at GGS

Dtrs: HI GUERN VIEW LEVIS DENIM 91 @ 7-02 (91/88)
 4-09 365D 2X 23790M 4.9% 1158F 3.3% 787P DHIA
 HI GUERN VIEW DIVAS DESTINY 90 @ 4-03 (89/87)
 3-10 349D 2X 27580M 4.4% 1206F 3.2% 891P 94
 HI GUERN VIEW LS DINA-ETV 87 @ 3-05 (84/87)
 2-09 309D 2X 22640M 5.7% 1282F 3.4% 768P 97
 HI GUERN VIEW DIVAS DESIRE 90 @ 3-06 (90/87)
 1st Sr. Three-Year-Old NJS-Harrisburg 2023
 HI GUERN VIEW DAISY DUKE-ETV 85 @ 3-01 (84/86)

- Four (4) #1 IVF embryos
- Sexed semen used for Females
- Resulting calves will be A2A2 by parentage
- Located at TransOva in Madison, Wisconsin
- Embryos must be in buyer's possession within 60 days of sale

EDGEWATER MEADOWS YOGIBEAR-ET USA000000604917 7GU402 A2A2

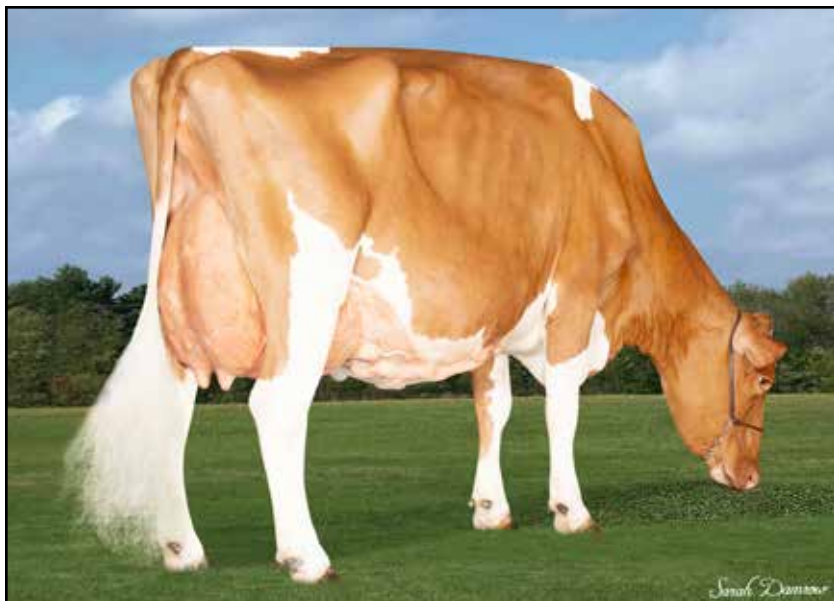
08/23 USDA GPTA -498M +0.13% +0F +0.04% -10P
 +0.2DPR +1.2PL -36NM\$ 20NM%ile -32CM\$ 99% Rel
 2.95SCS -1.20HCR 78% Rel -0.20CCR 95% Rel
 0.10LIV 86% Rel -1.10GL 99% Rel -1.00EFC 87% Rel
 AGA 08/23 PTAT +1.2 +1.4UDC +1.1FLC 99%Rel PTI +19

ADAMS CREEK REGAL DANCER USA000068019811

Appraisal: 92 @ 3-07 (94/86)
 2-01 298D 2X 14210M 4.8% 689F 3.5% 491P 95
 3-05 305D 2X 23750M 4.4% 1048F 3.3% 779P 50
 All-American Four-Year-Old 2011
 Honorable Mention All-American Jr. Two-Year-Old 2009
 Reserve Senior Champion NGS-Madison & NGS-Harrisburg 2011
 Dtrs: HI GUERN VIEW DANCERS DELITE-ET 91 @ 7-09 (91/78)
 3-04 305D 2X 16490M 4.9% 816F 3.5% 577P 94
 Nominated All-American Junior Three-Year-Old 2015
 HI GUERN VIEW DANCERS DREAM-ET 90 @ 3-07 (88/87)
 2-10 315D 2X 22390M 3.9% 879F 3.2% 721P 94
 LAND OF LIVING A DEBUTANTE-ET 86 @ 3-11 (87/87)
 2-07 339D 2X 18130M 4.1% 750F 3.2% 585P 91

3D: ADAMS CREEK GLACIER DANICA USA000068007530

Appraisal: 85 @ 4-04 (87/69)
 3-00 310D 2X 19070M 4.8% 921F 3.3% 627P 102
 Dtr: ADAMS CREEK TOOLITE REGAL DREAM-ET 90 @ 11-11 (90/86)
 6-03 302D 2X 17570M 5.1% 899F 3.4% 599P DHIA



Hi Guern View Diva Designer EX-94 2E
 104,210M 4.5% 4,715F 3.5% 3,674P Lifetime
 Dam of Lot 2; Maternal Sister to Lot 1

Designer!

Unanimous All-American Jr. 3-Year-Old 2018
 Unanimous Junior All-American Jr. 3-Year-Old 2018
 Junior All-American & HM All-American Aged Cow 2021
 Member, All-American Dam & Daughter 2018 & 2021
 Grand Champion NJS-Madison 2018
 Intermediate Champion NJS- & NGS-Madison 2018
 Reserve Senior Champion NJS-Madison 2021 & 2023
 Dam of DESIGN at Guernsey Gold Sires
 Dam of DENZEL at Semex

LOT 2 4 #1 JAMES DEAN X DESIGNER IVF EMBRYOS

Breeder & Owner: DINDERMAN ALAINA, AMERY + AIDAN
ORANGEVILLE IL

815.297.4111 hiayrview@hotmail.com

PA: -371M +0.07% -5F +0.04% -6P +1CM\$ -3NM\$
 +1.1PTAT +1.5UDC +1.8FLC -0.8DPR +2.1PL +25CPI 2.99SCS

SPRINGHILL JAMES DEAN-ETV 840003151591428 551GU911 A2A2

08/23 USDA GPTA -371M +0.15% +9F +0.08% +2P
 -1.3DPR +2.0PL +105NM\$ 40NM%ile +116CM\$ 58% Rel
 2.82SCS -1.60HCR 33% Rel -2.30CCR 34% Rel
 1.50LIV 29% Rel 0.00GL 42% Rel -3.80EFC 30% Rel
 AGA 08/23 PTAT +1.1 +1.8UDC +2.0FLC 57%Rel PTI +50

HI GUERN VIEW DIVA DESIGNER USA000078005623 A2A2

08/23 USDA GPTA -371M -0.01% -18F +0.00% -13P
 -0.3DPR +2.2PL -110NM\$ 15NM%ile -114CM\$ 69% Rel
 3.15SCS -1.30HCR 37% Rel -1.60CCR 45% Rel
 1.30LIV 37% Rel -0.30GL 46% Rel 0.20EFC 39% Rel
 4 Rec YDev: -439M -13F -8P
 4 App 08/23 PTAT +1.1 +1.1UDR +1.6FLC 64%Rel CPI +0
 Appraisal: EX 94 @ 7-00 (EEEE) 2E
 2-00 305D 2X 14990M 4.7% 702F 3.1% 471P 93
 3-03 305D 2X 16620M 4.3% 708F 3.4% 572P 92
 4-07 305D 2X 22600M 4.5% 1018F 3.4% 771P 95
 5-10 365D 2X 22400M 4.3% 955F 3.5% 782P DHIA
 1935D 104210M 4.5% 4715F 3.5% 3674P LIFE
 Dtrs: HI GUERN VIEW DESIGNER DECOR-ET 88 @ 5-02 (90/80)
 4-06 354D 2X 20560M 4.5% 921F 3.0% 624P DHIA
 Nominated Junior All-American Fall Calf 2018
 HI GUERN VIEW LIFES A DANCE 88 @ 3-02 (87/88)
 3-08 346D 3X 21500M 4.4% 955F 3.5% 751P 91
 HI GUERN VIEW VENGNCE DEAD ON 83 @ 2-04 (81/83)

- Four (4) #1 IVF embryos
- Sexed semen used for Females
- Resulting calves will be A2A2 by parentage
- Located at TransOva in Madison, Wisconsin
- Embryos must be in buyer's possession within 60 days of sale

MARODORE AARONS LEVI-ET USA000068025119 7GU438 A2A2

08/23 USDA GPTA -188M -0.04% -15F -0.04% -13P
 +0.4DPR +2.5PL -34NM\$ 20NM%ile -39CM\$ 97% Rel
 3.05SCS 0.20HCR 70% Rel -0.80CCR 90% Rel
 0.70LIV 71% Rel -0.60GL 99% Rel 3.60EFC 77% Rel
 AGA 08/23 PTAT +0.9 +0.5UDC +1.7FLC 97%Rel PTI +3

HI GUERN VIEW DANCING DIVA-ET USA000068047311 A2A2

Appraisal: EX 96 @ 11-03 (EEEE)
 1-11 353D 2X 19070M 4.8% 915F 3.5% 666P 95
 3-01 318D 2X 20010M 4.7% 933F 3.4% 688P 94
 4-00 305D 2X 19030M 4.6% 871F 3.7% 706P 95
 5-04 319D 2X 22670M 4.6% 1034F 3.5% 803P 94
 6-04 305D 2X 22100M 4.3% 957F 3.5% 781P 92
 7-07 305D 2X 25620M 3.9% 1001F 3.5% 897P 94
 8-09 365D 2X 29120M 4.4% 1282F 3.6% 1040P DHIA
 10-06 305D 2X 25290M 4.8% 1205F 3.3% 828P* 96
 3070D 203180M 4.6% 9322F 3.6% 7296P LIFE
 Dam of DRONE at St-Jacobs & DJ at GGS
 Dtrs: HI GUERN VIEW LEVIS DENIM 91 @ 7-02 (91/88)
 4-09 365D 2X 23790M 4.9% 1158F 3.3% 787P DHIA
 HI GUERN VIEW DIVAS DESTINY 90 @ 4-03 (89/87)
 3-10 349D 2X 27580M 4.4% 1206F 3.2% 891P 94
 HI GUERN VIEW LS DINA-ETV 87 @ 3-05 (84/87)
 2-09 309D 2X 22640M 5.7% 1282F 3.4% 768P 97
 HI GUERN VIEW DIVAS DESIRE 90 @ 3-06 (90/87)
 1st Sr. Three-Year-Old NJS-Harrisburg 2023
 HI GUERN VIEW DAISY DUKE-ETV 85 @ 3-01 (84/86)

3D: ADAMS CREEK REGAL DANCER USA000068019811

Appraisal: 92 @ 3-07 (94/86)
 3-05 305D 2X 23750M 4.4% 1048F 3.3% 779P 50
 All-American Four-Year-Old 2011
 Honorable Mention All-American Jr. Two-Year-Old 2009
 Reserve Senior Champion NGS-Madison & NGS-Harrisburg 2011



Villa!

Three-Time Total Performance Cow NGS-Puyallup
 1st Five-Year-Old NGS-Puyallup 2016
 24 daughters in the top 175 CPI heifers - August 2023
 Several sons headed to A.I.

Rozelyn Aaron Villa EX-94 2E GSD
 163,750M 5.4% 8,778F 3.8% 6,190P Lifetime
 Dam of Lots 3 - 6

LOT 3 5 #1 COIN COLLECTOR X VILLA IVF EMBRYOS

Breeder & Owner: RHG

BEAVER DAM WI

715.773.2851 jcvp@charter.net

PA: +22M +0.23% +40F +0.05% +10P +466CM\$ +457NM\$
 +1.0PTAT +1.7UDC +1.4FLC +0.5DPR +4.5PL +101CPI 2.84SCS

DAIRYMAN COIN COLLECTOR 840003219111145 551GU916 A2A2

08/23 USDA GPTA -190M +0.21% +27F +0.01% -4P
 +1.5DPR +6.3PL +449NM\$ 95NM%ile +454CM\$ 56% Rel
 2.83SCS 1.60HCR 31% Rel 1.70CCR 34% Rel
 3.20LIV 29% Rel -0.40GL 44% Rel 6.20EFC 30% Rel
 AGA 08/23 PTAT +0.7 +1.7UDC +0.6FLC 55%Rel PTI +76

ROZELYN AARON VILLA USA000068042242 A2A2

08/23 USDA GPTA +234M +0.24% +53F +0.09% +23P
 -0.6DPR +2.6PL +465NM\$ 98NM%ile +477CM\$ 70% Rel
 2.84SCS 0.70HCR 36% Rel -0.90CCR 45% Rel
 -0.20LIV 41% Rel 0.80GL 40% Rel 2.70EFC 38% Rel
 5 Rec YDev: +944M +103F +53P
 3 App 08/23 PTAT +1.3 +1.7UDR +2.1FLC 73%Rel CPI +125
 Appraisal: EX 94 @ 10-05 (EEEEEE) 2E Gold Star Dam - 2016
 2-00 350D 2X 19580M 5.0% 987F 3.5% 691P 101
 3-01 365D 2X 23380M 5.2% 1225F 3.6% 841P 101
 4-06 331D 2X 24420M 5.2% 1269F 3.6% 891P 101
 5-07 365D 2X 26110M 5.3% 1384F 3.8% 997P 101
 6-09 365D 2X 23900M 5.6% 1330F 3.9% 933P 102
 9-03 365D 2X 25010M 5.3% 1321F 3.7% 915P 99
 2617D 163750M 5.4% 8778F 3.8% 6190P LIFE
 Dtrs: ROZELYN GOTCHA VILLAMAE 92 @ 7-00 (92/93)
 6-03 365D 2X 22080M 5.9% 1298F 3.8% 837P 98
 1st Aged Cow NGS-Lynden 2022
 ROZELYN L MAN VIANNE 93 @ 5-09 (93/90)
 4-10 365D 2X 24920M 5.3% 1313F 4.0% 997P 83
 Nominated All-American Five-Year-Old 2022
 #55(T) CPI Cow - August 2023
 ROZELYN BEAU VELLA-ET 88 @ 4-06 (90/86)

- Five (5) #1 IVF embryos
- **Qualified for export to the EU!**
- Sexed semen used for Females
- Resulting calves would rank in top 10 CPI Heifers - August 2023
- Resulting calves will be A2A2 by parentage
- Located at TransOva, WI
- Embryos must be in buyer's possession within 60 days of sale

SNIDERS OPTION AARON-ET USA000000604670 7GU395 A2A2

08/23 USDA GPTA +154M +0.15% +34F -0.01% +3P
 -3.8DPR -0.3PL +102NM\$ 40NM%ile +103CM\$ 99% Rel
 2.93SCS 0.50HCR 82% Rel -5.80CCR 96% Rel
 -3.20LIV 87% Rel 1.50GL 99% Rel 3.50EFC 90% Rel
 AGA 08/23 PTAT +0.8 +1.1UDC +2.1FLC 99%Rel PTI +41

ROZELYN SAMSON VIENNA USA000068018724 A2A2

Appraisal: 91 @ 8-03 (88/93)
 1-11 323D 2X 15730M 4.9% 770F 3.5% 554P 101
 2-11 365D 2X 18920M 5.0% 951F 3.6% 687P 102
 4-01 310D 2X 21340M 5.3% 1136F 3.5% 751P 102
 5-02 365D 2X 24330M 5.3% 1290F 3.6% 866P 101
 6-05 357D 2X 25240M 5.3% 1330F 3.5% 885P 102
 7-06 365D 2X 26530M 5.1% 1362F 3.6% 951P 101
 8-08 365D 2X 25370M 5.3% 1351F 3.6% 924P 102
 10-00 365D 2X 22710M 5.5% 1245F 3.8% 867P 101
 2925D 185590M 5.3% 9750F 3.6% 6705P LIFE



Rozelyn L Man Vianne EX-93

4-10 365D 2X 24,920M 5.3% 1,313F 4.0% 997P
 Nominated All-American Five-Year-Old 2022
 Maternal Sister to Lots 3 - 6



Rozelyn Gotcha Villamae EX-92

6-03 365D 2X 22,080M 5.9% 1,298F 3.8% 837P
 1st Aged Cow NGS-Lynden 2022
 Maternal Sister to Lots 3 - 6

LOT 4 5 #1 MAVERICK X VILLA IVF EMBRYOS

Breeder & Owner: RHG

BEAVER DAM WI

715.773.2851 jcvp@charter.net

SMITHFIELD CRAIG MAVERICK-ET 840003239855878 6GU127 A2A2

08/23 USDA GPTA +127M +0.14% +30F +0.02% +8P
 +1.7DPR +5.5PL +484NM\$ 99NM%ile +494CM\$ 54% Rel
 2.65SCS 0.00HCR 29% Rel 2.10CCR 30% Rel
 3.70LIV 28% Rel 0.40GL 40% Rel 2.20EFC 27% Rel
 AGA 08/23 PTAT +0.6 +1.4UDC +0.5FLC 52%Rel PTI +92

PA: +181M +0.19% +42F +0.06% +16P +486CM\$ +475NM\$
 +1.0PTAT +1.6UDC +1.3FLC +0.6DPR +4.1PL +109CPI 2.75SCS

- Five (5) #1 IVF embryos
- Sexed semen used for Females
- Resulting calves would rank #2 on August 2023 CPI Heifer List
- Resulting calves will be A2A2 by parentage
- Located at TransOva, WI
- Embryos must be in buyer's possession within 60 days of sale

ROZELYN AARON VILLA USA000068042242 A2A2

Appraisal: EX 94 @ 10-05 (EEEEEE) 2E Gold Star Dam - 2016
 2617D 163750M 5.4% 8778F 3.8% 6190P LIFE

LOT 5 5 #1 PELOTON X VILLA IVF EMBRYOS

Breeder & Owner: RHG

BEAVER DAM WI

715.773.2851 jcvp@charter.net

DAIRYMAN THEO PELOTON 840003240506898 6GU128 A2A2

08/23 USDA GPTA +197M +0.13% +33F +0.00% +7P
 +1.8DPR +5.1PL +519NM\$ 99NM%ile +525CM\$ 54% Rel
 2.76SCS 1.20HCR 30% Rel 2.30CCR 32% Rel
 2.70LIV 29% Rel 0.40GL 39% Rel 1.40EFC 28% Rel
 AGA 08/23 PTAT +0.4 +0.8UDC +0.0FLC 51%Rel PTI +77

PA: +216M +0.19% +43F +0.05% +15P +501CM\$ +492NM\$
 +0.9PTAT +1.3UDC +1.1FLC +0.6DPR +3.9PL +101CPI 2.80SCS

- Five (5) #1 IVF embryos
- Sexed semen used for Females
- Resulting calves would rank in top 10 CPI Heifers - August 2023
- Resulting calves will be A2A2 by parentage
- Located at TransOva, WI
- Embryos must be in buyer's possession within 60 days of sale

ROZELYN AARON VILLA USA000068042242 A2A2

Appraisal: EX 94 @ 10-05 (EEEEEE) 2E Gold Star Dam - 2016
 2617D 163750M 5.4% 8778F 3.8% 6190P LIFE

LOT 6 5 #1 THEO X VILLA IVF EMBRYOS

Breeder & Owner: RHG

BEAVER DAM WI

715.773.2851 jcvp@charter.net

RIPLEY FARMS NETWORTH C THEO 840003146571505 6GU112 A2A2

04/22 USDA GPTA -103M +0.20% +31F +0.04% +4P
 +1.5DPR +4.6PL +469NM\$ 99NM%ile +480CM\$ 51% Rel
 2.68SCS -1.0SCR 0.50HCR 29% Rel 1.20CCR 33% Rel
 2.20LIV 29% Rel 0.00GL 39% Rel 3.10EFC 30% Rel
 AGA 04/22 PTAT +0.5 +0.6UDC +1.4FLC 48%Rel PTI +78

PA: +50M +0.22% +41F +0.07% +13P +468CM\$ +456NM\$
 +0.9PTAT +1.2UDC +1.8FLC +0.5DPR +3.6PL +100CPI 2.76SCS

- Five (5) #1 IVF embryos
- Sexed semen used for Females
- Resulting calves would rank in the top 12 CPI Heifers - August 2023
- Resulting calves will be A2A2 by parentage
- Located at TransOva, WI
- Embryos must be in buyer's possession within 60 days of sale

ROZELYN AARON VILLA USA000068042242 A2A2

Appraisal: EX 94 @ 10-05 (EEEEEE) 2E Gold Star Dam - 2016
 2617D 163750M 5.4% 8778F 3.8% 6190P LIFE



Knapps Spider Bank On Me-ET EX-94
 111,140M 5.6% 6,190F 3.7% 4,058P Life
 Three-Time Reserve All-American
 Dam of Lot 7



Knapps-Acc-Drone-Blast-ET VG-88
 Full Sister to Lot7

LOT 7 2 #1 DRONE X BANK ON ME IVF EMBRYOS

Breeder & Owner: KNAPP LANDEN
EPWORTH IA
563-590-5754 austinknapp25@gmail.com

PA: +218M -0.02% +6F -0.01% +5P +12CM\$ +17NM\$
 +1.4PTAT +1.5UDC +1.4FLC -1.3DPR +1.0PL +35CPI 3.19SCS

HI GUERN VIEW LEVI DRONE USA000097004646 94GU959 A2A2

08/23 USDA GPTA +99M -0.08% -10F -0.05% -6P
 -1.4DPR +0.8PL -126NM\$ 10NM%ile -138CM\$ 90% Rel
 3.33SCS -1.60HCR 51% Rel -2.20CCR 60% Rel
 0.20LIV 38% Rel -0.20GL 92% Rel -2.10EFC 47% Rel
 AGA 08/23 PTAT +1.5 +1.2UDC +2.4FLC 87%Rel PTI +14

KNAPPS SPIDER BANK ON ME-ET USA000097000091

08/23 USDA GPTA +336M +0.04% +22F +0.03% +16P
 -1.1DPR +1.1PL +159NM\$ 73NM%ile +161CM\$ 71% Rel
 3.04SCS -1.60HCR 34% Rel -1.50CCR 43% Rel
 -1.20LIV 36% Rel 0.70GL 44% Rel 3.20EFC 37% Rel
 4 Rec YDev: +709M +51F +35P
 2 App 08/23 PTAT +1.2 +1.7UDR +0.4FLC 71%Rel CPI +56
 Appraisal: EX 94 @ 6-01 (EEEEVE)
 1-11 365D 2X 19560M 5.3% 1040F 3.6% 700P DHIA
 3-07 365D 2X 27770M 5.4% 1493F 3.4% 958P DHIA
 5-05 305D 2X 28590M 5.3% 1525F 3.4% 964P 96
 6-06 250D 2X 16960M 6.5% 1110F 4.0% 675P 94
 1811D 111140M 5.6% 6190F 3.7% 4058P LIFE

Reserve All-American Aged Cow 2021
Reserve All-American Four-Year-Old 2019
Reserve All-American Jr. Two-Year-Old 2017
HM Junior All-American & Nom. AA Spring Yearling 2016
Member, AA Best Three Females & Exhibitor's Herd 2017
 Dtrs: KNAPPS COPPER BANK ON IT 90 @ 5-04 (91/86)
 4-08 365D 2X 28160M 5.2% 1474F 3.7% 1030P DHIA
Nominated All-American Jr. Two-Year-Old 2019
 KNAPPS TG ROBBING THE BANK 85 @ 3-08 (84/84)
 2-07 365D 2X 24620M 4.6% 1127F 3.4% 834P DHIA
Nominated All-American Winter Calf 2019
 KNAPPS ACC DRONE BLAST-ET 88 @ 2-07 (88/88)
Nominated All-American Spring Yearling 2022
2nd Junior Two-Year-Old NGS-Madison 2023

- Two (2) #1 IVF embryos
- Reverse sorted semen used for Females
- Embryos can be transported via TransOva
- Embryos must be in buyer's possession within 60 days of sale

COULEE CREST LUXURY SPIDER-ET USA00000604229 1GU415

08/23 USDA GPTA +285M +0.08% +27F +0.09% +25P
 -2.9DPR -3.4PL -60NM\$ 10NM%ile -57CM\$ 97% Rel
 3.30SCS -0.80HCR 71% Rel -3.10CCR 91% Rel
 -3.70LIV 76% Rel -0.30GL 98% Rel 7.50EFC 79% Rel
 AGA 08/23 PTAT +0.4 +0.0UDC -1.3FLC 97%Rel PTI +15

KNAPPS MR AMERICA MISS BESTANY USA000068026893

Appraisal: 92 @ 6-07 (92/89)
 2-02 365D 2X 18700M 5.0% 938F 3.2% 604P DHIA
 3-10 365D 2X 23410M 5.5% 1297F 3.2% 748P DHIA
 5-10 365D 2X 24700M 5.8% 1438F 3.3% 817P DHIA
 2164D 120810M 5.8% 7034F 3.6% 4349P LIFE
Junior All-American & Nom. All-American Sr. Two-Year-Old 2011

3D: KNAPPS ACE MISS BEST USA000068006305

Appraisal: 92 @ 5-08 (91/91)
 6-02 365D 2X 24730M 5.4% 1330F 3.2% 799P DHIA
 1837D 102260M 5.5% 5650F 3.4% 3430P LIFE
Honorable Mention Junior All-American Aged Cow 2011
Nominated Junior All-American Sr. Two-Year-Old 2007
 Dtr: KNAPPS REGIS BLESSING 92 @ 5-07 (92/88)
 5-02 365D 2X 24940M 3.8% 939F 3.2% 800P DHIA
Reserve Junior All-American Five-Year-Old 2015

4D: KNAPPS MISS BEST USA000003060918

Appraisal: 93 @ 5-04 (93/93) Gold Star Dam - 2002
 3-04 365D 2X 28510M 6.4% 1812F*3.4% 959P DHIA
 1679D 116150M 6.0% 6954F 3.5% 4025P LIFE
Reserve All-American Sr. Three-Year-Old 2001
Honorable Mention All-American Four-Year-Old 2002



Amanda!

Unanimous All-American Four-Year-Old 2022
 Member, All-American Exhibitor's Herd 2022
 Grand Champion NGS-Harrisburg 2022
 Grand Champion Ohio State Fair 2023
 3rd Five-Year-Old NGS-Madison 2023
 #20(T) PTAT Cow - August 2023

Country Lane L Amanda EX-94

4-03 317D 2X 20,880M 5.2% 1,088F 3.2% 678P
 Dam of Lot 8

LOT 8 3 #1 GOLDMINE X AMANDA IVF EMBRYOS

Breeder & Owner: SPRINGHILL

BIG PRAIRIE OH

330.473.9660 springhill.chris@gmail.com

PA: -142M +0.06% +4F +0.04% +1P -5CM\$ -6NM\$
 +1.5PTAT +1.9UDC +2.8FLC -0.5DPR +0.4PL +52CPI 3.08SCS

TERPHILL JAMES DEAN GOLDMINE-ETV 840003214098874 6GU126 A2A2

08/23 USDA GPTA -204M +0.10% +8F +0.08% +7P
 -1.3DPR +0.7PL +24NM\$ 35NM%ile +30CM\$ 52% Rel
 3.09SCS -1.90HCR 28% Rel -2.10CCR 30% Rel
 0.50LIV 27% Rel -0.90GL 31% Rel -5.70EFC 27% Rel
 AGA 08/23 PTAT +1.2 +1.7UDC +2.1FLC 50%Rel PTI +50

COUNTRY LANE L AMANDA USA000097005003 A2A2

08/23 USDA GPTA -79M +0.02% +0F -0.01% -5P
 +0.4DPR +0.1PL -36NM\$ 28NM%ile -39CM\$ 65% Rel
 3.06SCS 0.10HCR 35% Rel 0.40CCR 40% Rel
 -0.40LIV 36% Rel -0.10GL 41% Rel 2.40EFC 37% Rel
 2 Rec YDev: +26M +4F -7P
 3 App 08/23 PTAT +1.7 +2.0UDR +3.4FLC 67%Rel CPI +54
 Appraisal: EX 94 @ 5-04 (EEEEEE)
 4-03 317D 2X 20880M 5.2% 1088F 3.2% 678P 96
 5-03 305D 2X 25971M 4.7% 1214F 3.2% 820P Proj. Act.

- Three (3) #1 IVF embryos
- Reverse sorted semen used for Females
- Resulting calves will be A2A2 by parentage
- Located at TransOva, MD
- Embryos must be in buyer's possession within 60 days of sale

MARODORE AARONS LEVI-ET USA000068025119 7GU438 A2A2

08/23 USDA GPTA -188M -0.04% -15F -0.04% -13P
 +0.4DPR +2.5PL -34NM\$ 20NM%ile -39CM\$ 97% Rel
 3.05SCS 0.20HCR 70% Rel -0.80CCR 90% Rel
 0.70LIV 71% Rel -0.60GL 99% Rel 3.60EFC 77% Rel
 AGA 08/23 PTAT +0.9 +0.5UDC +1.7FLC 97%Rel PTI +3

HI FIELD GARY TABATHA USA000068028282 A2A2

Appraisal: VG 87 @ 9-05 (VE++V)
 Dtrs: HI FIELD CHAMP SHELLY 86 @ 4-08 (87/85)
 COUNTRY LANE TINA 86 @ 4-06 (86/85)

3D: HI FIELD APOLLO MAGGIE USA000068002827

Appraisal: 88 @ 5-07 (88/86)
 Dtr: HI FIELD LOUIE LOU 90 @ 4-07 (91/86)

4D: HI FIELD PERFECT ROBIN USA000003061545

Appraisal: 90 @ 8-05 (90/89)
 Dtr: HI FIELD JORDAN DOLLY 91 @ 4-08 (92/88)



Coulee Crest Pilot Lava-ET EX-90 2E
 128,290M 5.6% 7,209F 3.7% 4,744P Lifetime
 #2 CPI Cow August 2023
 Dam of Lot 9; Granddam of Lot 10



LOT 9 4 #1 GOLDMINE X LAVA IVF EMBRYOS

**Breeder & Owner: COULEE CREST LLC
 CASHTON WI**

(608) 633-2321 couleecrest@hotmail.com
 PA: +399M +0.07% +30F +0.04% +19P +178CM\$ +174NM\$
 +1.2PTAT +1.8UDC +1.6FLC -1.5DPR +0.4PL +84CPI 3.00SCS

- Four (4) #1 IVF embryos
- Sexed semen used for Females
- Resulting calves will be A2A2 by extended parentage
- Resulting calves would rank in top 65 CPI Heifers, August 2023
- Located at TransOva in Madison, Wisconsin
- Embryos must be in buyer's possession within 60 days of sale

TERPHILL JAMES DEAN GOLDMINE-ETV 840003214098874 6GU126 A2A2

08/23 USDA GPTA -204M +0.10% +8F +0.08% +7P
 -1.3DPR +0.7PL +24NM\$ 35NM%ile +30CM\$ 52% Rel
 3.09SCS -1.90HCR 28% Rel -2.10CCR 30% Rel
 0.50LIV 27% Rel -0.90GL 31% Rel -5.70EFC 27% Rel
 AGA 08/23 PTAT +1.2 +1.7UDC +2.1FLC 50%Rel PTI +50

LINDRIAN GRUMPY PILOT-ET CAN000011632409 200GU307 A2A2

08/22 USDA GPTA -433M +0.11% -1F +0.06% -5P
 +0.4DPR +1.0PL +64NM\$ 29NM%ile +75CM\$ 88% Rel
 2.70SCS -0.60HCR 47% Rel 0.90CCR 65% Rel
 1.10LIV 43% Rel 2.60GL 91% Rel 0.60EFC 48% Rel
 AGA 08/22 PTAT +0.5 +1.5UDC +1.2FLC 83%Rel PTI +28

COULEE CREST PILOT LAVA-ET USA000097000835

08/23 USDA GPTA +1001M +0.03% +51F -0.01% +31P
 -1.7DPR +0.0PL +324NM\$ 94NM%ile +326CM\$ 69% Rel
 2.91SCS -0.20HCR 31% Rel -1.20CCR 39% Rel
 0.40LIV 31% Rel 1.10GL 42% Rel 2.30EFC 32% Rel
 4 Rec YDev: +1843M +135F +77P
 3 App 08/23 PTAT +1.1 +1.8UDR +1.0FLC 70%Rel CPI +118
 Appraisal: EX 90 @ 7-08 (EEVEV) 2E
 2-11 365D 3X 27590M 5.6% 1558F 3.6% 997P DHIA
 4-01 365D 3X 27730M 5.8% 1618F 3.9% 1071P DHIA
 5-04 365D 3X 32480M 5.6% 1812F 3.6% 1182P DHIA
 6-06 365D 3X 33320M 5.4% 1805F 3.6% 1206P DHIA
 1563D 128290M 5.6% 7209F 3.7% 4744P LIFE

COULEE CREST LAREDO LALITA-ET USA000068039047 A2A2

Appraisal: 84 @ 4-06 (82/84) Gold Star Dam - 2020
 1-09 365D 3X 22370M 5.4% 1216F 3.7% 824P DHIA
 3-02 365D 3X 29720M 5.6% 1652F 3.7% 1094P DHIA
 4-05 333D 3X 23610M 5.4% 1275F 3.7% 867P 94
 5-06 358D 3X 26720M 5.5% 1458F 3.6% 975P 94
 6-07 365D 3X 30500M 5.9% 1786F 3.8% 1146P DHIA
 2150D 153860M 5.6% 8602F 3.7% 5756P LIFE

#2 CPI Cow August 2023

Dam of 25 of the top 200 CPI Heifers - Including 3 of the top 10!
Nominated Jr. All-American Senior Three-Year-Old 2019
 Son at STGenetics: COULEE CREST LAVAS HURRICANE-ETV GPTI +55
 Son at Semex: COULEE CREST TSUNAMI-ETV GPTI +44
 Dtrs: COULEE CREST FF LAVAS LYNN-ETV 82 @ 2-08 (83/81)
 2-00 305D 3X 17750M 5.5% 972F 3.6% 647P 101
 COULEE CREST JC PENNEY SIRI-ETV 85 @ 2-04 (85/84)
 COULEE CREST LONDON SKYLAR-ETV 86 @ 2-06 (87/86)
 COULEE CREST LONDON STEFFI-ETV 85 @ 2-02 (85/86)
#23(T) CPI Cow August 2023
 COULEE CREST THEO SUMMER-ETV 88 @ 2-03 (90/88)
4th Summer Junior Two-Year-Old NGS-Madison 2023

3D: FLAMBEAU MANOR DECISION LORI-ET USA000068012709 A2A2

Appraisal: 90 @ 8-02 (88/90) Gold Star Dam - 2013
 3-09 365D 3X 44250M*5.9% 2600F*3.0% 1313P* 94
 2328D 184340M 5.4%10017F 3.3% 6002P LIFE

4D: FLAMBEAU MANOR ENHANCER LANA USA000003043629

Appraisal: 92 @ 7-11 (90/90) Gold Star Dam - 2001
 5-10 365D 2X 30271M 5.4% 1645F 3.2% 968P DHIA
 1980D 130421M 4.9% 6454F 3.3% 4293P LIFE

5D: FLAMBEAU MANOR VOL LAURA USA000003022186

Appraisal: 90 @ 4-07
 4-02 305D 2X 18260M 4.2% 765F 3.7% 680P DHIA

6D: FLAMBEAU MANOR LESLIE USA000002947026

Appraisal: 90 @ 3-08 Gold Star Dam - 1992

7D: FLAMBEAU MANOR LAUREL USA000002861817

Appraisal: 80 @ 9-04 Gold Star Dam - 1992
 6-01 357D 2X 21602M 4.5% 974F 3.7% 792P DHIA
 3193D 167770M 4.6% 7639F 3.7% 6168P LIFE



Coulee Crest Theo Summer-ETV VG-88 90MS
 4th Summer Jr. Two-Year-Old NGS-Madison 2023
 Maternal Sister to Lot 9; Mat. Sister to Dam of Lot 10

Flambeau Manor Decision Lori-ET EX-90 GSD
 3-09 365D 3X 44,250M* 5.9% 2,600F* 3.0% 1,313P*
 3rd Dam of Lot 9; 4th Dam of Lot 10

LOT 10 3 #1 MAVERICK X SECOYA IVF EMBRYOS

Breeder & Owner: TAYLOR SHERYL & GLENN
CASSVILLE NY
315-292-4230 twfarm.sheryl@gmail.com

PA: +504M +0.05% +32F +0.01% +18P +411CM\$ +405NM\$
 +0.8PTAT +1.5UDC +1.0FLC +0.6DPR +3.7PL +99CPI 2.79SCS

SMITHFIELD CRAIG MAVERICK-ET 840003239855878 6GU127 A2A2

08/23 USDA GPTA +127M +0.14% +30F +0.02% +8P
 +1.7DPR +5.5PL +484NM\$ 99NM%ile +494CM\$ 54% Rel
 2.65SCS 0.00HCR 29% Rel 2.10CCR 30% Rel
 3.70LIV 28% Rel 0.40GL 40% Rel 2.20EFC 27% Rel
 AGA 08/23 PTAT +0.6 +1.4UDC +0.5FLC 52%Rel PTI +92

COULEE CREST NEWTON SECOYA-ETV 840003257821107 A2A2

08/23 USDA GPTA +880M -0.04% +33F -0.01% +28P
 -0.6DPR +1.9PL +325NM\$ 94NM%ile +327CM\$ 52% Rel
 2.93SCS 0.00HCR 28% Rel -0.40CCR 34% Rel
 1.30LIV 28% Rel 0.60GL 41% Rel 1.50EFC 29% Rel
 0 App 08/23 PTAT +1.0 +1.5UDR +1.4FLC 52%Rel CPI +106
 #4 CPI Heifer - August 2023

- Three (3) #1 IVF embryos
- Sexed semen used for Females
- Resulting calves will be A2A2 by parentage
- Resulting calves would rank in top 14 CPI Heifers, August 2023
- Located at Vytelle, NY
- Embryos must be in buyer's possession within 60 days of sale

RIPLEY FARMS JAG NEWTON 840003130939306 7GU470 A2A2

04/23 USDA GPTA +296M +0.01% +15F +0.02% +14P
 +2.5DPR +4.5PL +360NM\$ 90NM%ile +365CM\$ 81% Rel
 2.87SCS +1.9SCR 0.50HCR 41% Rel 2.60CCR 54% Rel
 3.10LIV 38% Rel 0.00GL 92% Rel 0.80EFC 42% Rel
 AGA 04/23 PTAT +0.2 +0.8UDC +1.0FLC 73%Rel PTI +86

COULEE CREST PILOT LAVA-ET USA000097000835

Appraisal: EX 90 @ 7-08 (EEVEV) 2E
 2-11 365D 3X 27590M 5.6% 1558F 3.6% 997P DHIA
 4-01 365D 3X 27730M 5.8% 1618F 3.9% 1071P DHIA
 5-04 365D 3X 32480M 5.6% 1812F 3.6% 1182P DHIA
 6-06 365D 3X 33320M 5.4% 1805F 3.6% 1206P DHIA
 1563D 128290M 5.6% 7209F 3.7% 4744P LIFE
 #2 CPI Cow August 2023

3D: COULEE CREST LAREDO LALITA-ET USA000068039047 A2A2

Appraisal: 84 @ 4-06 (82/84) Gold Star Dam - 2020
 6-07 365D 3X 30500M 5.9% 1786F 3.8% 1146P DHIA
 2150D 153860M 5.6% 8602F 3.7% 5756P LIFE

3D: FLAMBEAU MANOR DECISION LORI-ET USA000068012709 A2A2

Appraisal: 90 @ 8-02 (88/90) Gold Star Dam - 2013
 3-09 365D 3X 44250M*5.9% 2600F*3.0% 1313P* 94
 2328D 184340M 5.4%10017F 3.3% 6002P LIFE

5D: FLAMBEAU MANOR ENHANCER LANA USA000003043629

Appraisal: 92 @ 7-11 (90/90) Gold Star Dam - 2001
 5-10 365D 2X 30271M 5.4% 1645F 3.2% 968P DHIA
 1980D 130421M 4.9% 6454F 3.3% 4293P LIFE

6D: FLAMBEAU MANOR VOL LAURA USA000003022186

Appraisal: 90 @ 4-07
 4-02 305D 2X 18260M 4.2% 765F 3.7% 680P DHIA

7D: FLAMBEAU MANOR LESLIE USA000002947026

Appraisal: 90 @ 3-08 Gold Star Dam - 1992



Up The Creek J Dean Whiteclaw-ETV
 5th Summer Yearling NGS-Madison 2023
 1st Summer Yearling Minnesota State Fair 2023
 Maternal Sister to Lot 11

Up the Creek Aaron Waconia-ET EX-94
 124,890M 5.5% 6,850F 3.8% 4,734P Lifetime
 HM All-American Five-Year-Old 2014
 Granddam of Lot 11

LOT 11 3 #1 AUDREY X WHITEWATER IVF EMBRYOS

**Breeder & Owner: ANDERSON DONNA
 LESTER PRAIRIE MN**

320.395.2023 upthecreekguernseys@gmail.com
 PA: +112M +0.19% +38F +0.08% +17P +237CM\$ +230NM\$
 +1.0PTAT +0.9UDC +1.9FLC -1.7DPR +0.9PL +78CPI 3.02SCS

UP THE CREEK LONDON AUDREY 840003210758207 6GU122 A2A2

08/23 USDA GPTA +313M +0.04% +21F +0.01% +12P
 +1.4DPR +3.3PL +326NM\$ 85NM%ile +328CM\$ 56% Rel
 2.96SCS +1.3SCR -0.10HCR 29% Rel 1.80CCR 36% Rel
 0.40LIV 30% Rel 0.20GL 43% Rel -4.60EFC 30% Rel
 AGA 08/23 PTAT +0.7 +0.5UDC +1.5FLC 55%Rel PTI +74

UP THE CREEK SHAGGYS WHITEWATER-ET USA000097000051 A2A2

08/23 USDA GPTA -89M +0.34% +55F +0.14% +22P
 -4.7DPR -1.6PL +134NM\$ 68NM%ile +146CM\$ 65% Rel
 3.08SCS -1.10HCR 31% Rel -5.40CCR 42% Rel
 -2.70LIV 32% Rel 0.40GL 41% Rel -0.30EFC 32% Rel
 3 Rec YDev: +661M +184F +92P
 5 App 08/23 PTAT +1.2 +1.2UDR +2.2FLC 72%Rel CPI +81
 Appraisal: EX 93 @ 7-04 (EEEE) 2E
 2-03 365D 2X 16780M 5.6% 945F 4.0% 665P DHIA
 3-08 365D 2X 21060M 6.2% 1304F 4.1% 860P DHIA
 6-09 305D 2X 21160M 6.2% 1311F 3.8% 811P 98
 #59(T) CPI Cow August 2023

Dam of Seven of the top 200 CPI Heifers - August 2023
6th Senior Three-Year-Old NGS-Madison 2019
 Dtrs: UP THE CREEK J DEAN WINTERROSE-ETV
1st Fall Yearling Minnesota State Fair 2023
 #7(T) PTAT Heifer & #109(T) CPI Heifer August 2023
 UP THE CREEK J DEAN WHITECLAW-ETV
5th Summer Yearling NGS-Madison 2023



- Three (3) #1 IVF embryos
- Reverse sorted semen used for Females
- Resulting calves will be A2A2 by parentage
- Resulting calves would rank in the top 100 CPI Heifers - August 2023
- Located at Up The Creek Farm, Minnesota
- Embryos must be in buyer's possession within 60 days of sale

UP THE CREEK SPIDERS SHAGGY-ET USA000068046196 54GU469 A1A2

08/23 USDA GPTA -630M +0.28% +19F +0.17% +8P
 -1.3DPR -2.5PL -56NM\$ 15NM%ile -41CM\$ 86% Rel
 2.98SCS -0.80HCR 47% Rel -1.30CCR 62% Rel
 -2.30LIV 44% Rel -1.00GL 89% Rel 3.10EFC 48% Rel
 AGA 08/23 PTAT -0.3 -0.3UDC -2.2FLC 86%Rel PTI -13

UP THE CREEK AARON WACONIA-ET USA000068025005

Appraisal: EX 94 @ 10-11 (EEVEE)
 2-03 331D 2X 14550M 5.2% 763F 3.5% 510P 96
 3-04 365D 2X 17140M 5.6% 955F 3.8% 651P DHIA
 4-07 336D 2X 17170M 5.6% 955F 3.5% 609P 98
 5-08 365D 2X 21050M 6.0% 1258F 3.8% 799P DHIA
 7-04 365D 3X 20310M 4.7% 958F 3.7% 759P DHIA
 9-11 365D 2X 17470M 5.1% 896F 3.6% 634P DHIA
 2732D 124890M 5.5% 6850F 3.8% 4734P LIFE
Honorable Mention All-American Five-Year-Old 2014
Nominated All-American Aged Cow 2016
 Dtrs: UP THE CREEK GEO WASECA 86 @ 8-09 (87/78)
 4-10 365D 3X 22260M 5.0% 1118F 3.3% 732P DHIA
 UP THE CREEK SHAGGYS WACO-ET 90 @ 5-01 (91/84)
 4-06 365D 2X 16420M 5.5% 900F 4.0% 649P DHIA
 UP THE CREEK HOPPER WHOPPER-ET 88 @ 5-06 (87/87)
 3-09 365D 2X 17300M 5.3% 912F 3.8% 662P DHIA
4th Yearling in Milk NGS-Madison 2019
 UP THE CREEK LATIMER WEST POINT-TW 90 @ 6-05 (90/86)
Reserve Senior Champion Minnesota State Fair 2021

3D: UP THE CREEK ROYAL OAKS WINKY USA000003043725

Appraisal: 93 @ 10-00 (93/92)
 8-08 365D 2X 26020M 5.3% 1386F 3.2% 827P 99
 3103D 165810M 4.7% 7791F 3.4% 5671P LIFE
Honorable Mention All-American Sr. Three-Year-Old 1999

Up The Creek Audreys Whodunit-ETV
 6th Fall Calf Midwest Guernsey Show 2023
 Full Sister to Lot 11



Knapps HP MB Trina-ETV EX-91
 Reserve All-American 2021 & 2022
 Dam of Lot 12
 Maternal Sister to Dam of Lot 13



Empire JCP Trinidad VG-86
 Reserve All-American Summer Yearling 2022
 3rd Summer Jr. Two-Year-Old NGS-Madison 2023
 Full Sister to Lot 12

LOT 12 3 #1 JC PENNEY X TRINA IVF EMBRYOS

Breeder & Owner: SCHRUPP TIM & MEGAN
PAYNESVILLE MN

320.492.7735 beck0648@umn.edu

PA: -31M -0.08% -15F +0.01% +0P -56CM\$ -58NM\$
 +1.4PTAT +1.6UDC +2.6FLC -1.7DPR +1.4PL +19CPI 2.93SCS

SPRINGHILL JC PENNEY-ET 840003151591406 6GU114 A2A2

08/23 USDA GPTA -121M +0.06% +5F +0.02% +0P
 -2.9DPR +0.1PL -62NM\$ 10NM%ile -60CM\$ 72% Rel
 2.99SCS +0.4SCR -3.30HCR 43% Rel -4.60CCR 42% Rel
 -0.40LIV 37% Rel 0.80GL 54% Rel -2.30EFC 37% Rel
 AGA 08/23 PTAT +1.2 +1.5UDC +2.5FLC 64%Rel PTI +28

KNAPPS HP MB TRINA-ETV 840003150322477 A2A2

08/23 USDA GPTA +60M -0.21% -34F -0.01% +0P
 -0.5DPR +2.6PL -53NM\$ 24NM%ile -51CM\$ 69% Rel
 2.86SCS -2.60HCR 32% Rel -1.80CCR 47% Rel
 0.60LIV 37% Rel -0.90GL 47% Rel -5.60EFC 38% Rel

1 Rec YDev: -2236M -243F -119P
 3 App 08/23 PTAT +1.5 +1.6UDR +2.7FLC 70%Rel CPI +9
 Appraisal: EX 91 @ 4-05 (EEEEVE)

Reserve All-American Four-Year-Old 2022

Reserve All-American Junior Three-Year-Old 2021

Grand Champion Midwest Guernsey Show 2022

Dtrs: EMPIRE DRONE TRINITY 85 @ 2-03 (83/83)

2nd Junior Two-Year-Old Minnesota State Fair 2022

EMPIRE JCP TRINIDAD 86 @ 1-10 (85/86)

Reserve All-American Summer Yearling 2022

3rd Summer Junior Two-Year-Old NGS-Madison 2023

EMPIRE JCP TOBAGO-ET

2nd Fall Calf Midwest Guernsey Show 2023

- Three (3) #1 IVF embryos
- Reverse sorted semen used for females
- Embryos located in Paynesville, MN & can be transported via TransOva
- Resulting calves will be A2A2 by parentage
- Embryos must be in buyer's possession within 60 days of sale

INDIAN ACRES PIES-ET USA000068024088 94GU958 A2A2

08/23 USDA GPTA +337M -0.10% -3F +0.03% +16P
 -2.9DPR -1.0PL -69NM\$ 10NM%ile -69CM\$ 92% Rel
 3.16SCS -3.60HCR 51% Rel -3.30CCR 74% Rel
 -1.80LIV 56% Rel -1.30GL 91% Rel -8.50EFC 60% Rel
 AGA 08/23 PTAT +1.0 +0.5UDC +2.6FLC 89%Rel PTI +22

KNAPPS ACE TAMERA USA000068006299

Appraisal: 93 @ 9-07 (91/92)
 2-07 365D 2X 19960M 4.7% 935F 3.4% 670P DHIA
 3-08 365D 2X 24510M 4.3% 1044F 3.2% 786P DHIA
 5-06 365D 2X 24830M 4.6% 1146F 3.3% 809P DHIA
 9-07 365D 2X 32350M 4.2% 1351F 3.2% 1036P DHIA
 3038D 178720M 4.4% 7847F 3.4% 6004P LIFE
 25 Excellent Daughters & Counting!

3D: SUNRISE LUXURY TAMI USA000003068188

Appraisal: 93 @ 5-04 (92/92)
 3-10 365D 2X 28480M 4.2% 1198F 3.2% 907P DHIA
 2395D 151070M 4.0% 6087F 3.2% 4888P LIFE



Empire Drone Trinity VG-85
 2nd Jr. Two-Year-Old MN State Fair 2022
 Maternal Sister to Lot 12



Thurston Farms Primetime Trixie EX-92
 2-09 305D 3X 21,122M 4.0% 835F 3.3% 700P
 Unanimous All-American Yearling in Milk 2019
 Maternal Sister to Lot 13



Knapps Regis Tambourine-ET EX-95
 6-10 365D 40,160M* 5.1% 2,055F* 3.3% 1,338P*
 Unanimous All-American Aged Cow 2015
 Full Sister to Dam of Lot 13

LOT 13 4 #1 MISSILE OR JC PENNEY X TROTTER IVF EMBRYOS

Breeder & Owner: TAYLOR GLENN A & SHERYL
 CASSVILLE NY
 315-292-4230 twfarm.sheryl@gmail.com

Sire Choice 1:

VALLEY GEM MISSILE-ETV 840003208696258 200GU125 A2A2

08/23 USDA GPTA -1015M +0.20% -13F +0.08% -20P
 +0.1DPR +0.0PL -182NM\$ 10NM%ile -179CM\$ 56% Rel
 3.12SCS -2.20HCR 31% Rel -0.70CCR 40% Rel
 2.20LIV 35% Rel -0.40GL 40% Rel -4.20EFC 36% Rel
 AGA 08/23 PTAT +1.2 +1.9UDC +1.9FLC 56%Rel PTI +4

Missile mating parent averages:

PA: +46M -0.03% -5F -0.03% -4P -17CM\$ -14NM\$
 +0.9PTAT +1.3UDC +0.6FLC -0.1DPR +1.1PL +11CPI 3.03SCS

Sire Choice 2:

SPRINGHILL JC PENNEY-ET 840003151591406 6GU114 A2A2

08/23 USDA GPTA +162M +0.06% +5F +0.02% +0P
 -2.9DPR +0.1PL -62NM\$ 10NM%ile -60CM\$ 72% Rel
 2.99SCS +0.4SCR -3.30HCR 43% Rel -4.60CCR 42% Rel
 -0.40LIV 37% Rel 0.80GL 54% Rel -2.30EFC 37% Rel
 AGA 08/23 PTAT +1.2 +1.5UDC +2.5FLC 64%Rel PTI +28

JC Penney mating parent averages:

PA: +634M -0.10% +5F -0.06% +7P +43CM\$ +47NM\$
 +0.9PTAT +1.1UDC +0.9FLC -1.6DPR +1.1PL +24CPI 2.96SCS

KNAPPS REGIS TROTTER-ETV USA000097000111 A2A2

08/23 USDA GPTA +1106M -0.25% +4F -0.13% +13P
 -0.2DPR +2.1PL +155NM\$ 73NM%ile +145CM\$ 67% Rel
 2.93SCS -0.50HCR 30% Rel -1.00CCR 39% Rel
 -1.00LIV 35% Rel 0.60GL 37% Rel 1.60EFC 34% Rel
 4 Rec YDev: +2535M +17F +29P
 3 App 08/23 PTAT +0.5 +0.6UDR -0.7FLC 63%Rel CPI +20
 Appraisal: VG 88 @ 7-09 (VE+VV)
 4-10 365D 3X 28670M 3.9% 1129F 3.1% 875P DHIA
 6-01 365D 3X 32500M 3.9% 1271F 2.9% 958P DHIA
 Dtrs: THURSTON FARMS PRIMETIME TRIXIE 92 @ 3-07 (91/94)
 2-09 305D 3X 21122M 4.0% 835F 3.3% 700P DHIA
 Unanimous All-American Yearling in Milk 2019

HERITAGE BRK NOVAK TREASURE-ET 87 @ 4-05 (87/88)
 3-07 365D 3X 27410M 4.2% 1153F 3.0% 818P DHIA

- Four (4) #1 IVF embryos
- Buyer's choice of sire - can be a combination of both or just one
- Reverse sorted semen used for females
- Embryos located at Vytelle, NY
- Resulting calves will be A2A2 by parentage
- Embryos must be in buyer's possession within 60 days of sale

MARODORE ENHANCER REGIS-ET USA000000603223 14GU280

08/23 USDA GPTA +687M -0.12% +10F -0.10% +5P
 -2.3DPR -3.6PL -184NM\$ 10NM%ile -195CM\$ 97% Rel
 3.09SCS -0.30HCR 63% Rel -2.90CCR 91% Rel
 -5.50LIV 79% Rel 1.30GL 96% Rel -0.70EFC 80% Rel
 AGA 08/23 PTAT -0.1 -0.3UDC -2.4FLC 98%Rel PTI -41

KNAPPS ACE TAMERA USA000068006299

Appraisal: 93 @ 9-07 (91/92)
 2-07 365D 2X 19960M 4.7% 935F 3.4% 670P DHIA
 3-08 365D 2X 24510M 4.3% 1044F 3.2% 786P DHIA
 5-06 365D 2X 24830M 4.6% 1146F 3.3% 809P DHIA
 9-07 365D 2X 32350M 4.2% 1351F 3.2% 1036P DHIA
 3038D 178720M 4.4% 7847F 3.4% 6004P LIFE
 25 Excellent Daughters & Counting!

3D: SUNRISE LUXURY TAMI USA000003068188

Appraisal: 93 @ 5-04 (92/92)
 3-10 365D 2X 28480M 4.2% 1198F 3.2% 907P DHIA
 2395D 151070M 4.0% 6087F 3.2% 4888P LIFE



Heritage Brook AP Tinsel-ETV VG-87

Nominated Jr. All-American 2021 & 2022
 Res. Intermediate Champion NE Classic 2023
 Dam of Lot 14; Maternal Family of Lots 12 - 18

LOT 14 5 #1 JAMES DEAN X TINSEL IVF EMBRYOS

Breeder & Owner: JOHNSON ZACHARY & HURST HANNAH
 TUNBRIDGE VT

614.208.3529 guernsey95@yahoo.com

PA: +2M -0.10% -18F -0.06% -11P -61CM\$ -57NM\$
 +0.5PTAT +1.1UDC +0.9FLC -0.6DPR +1.5PL -15CPI 2.90SCS

SPRINGHILL JAMES DEAN-ETV 840003151591428 551GU911 A2A2

08/23 USDA GPTA -371M +0.15% +9F +0.08% +2P
 -1.3DPR +2.0PL +105NM\$ 40NM%ile +116CM\$ 58% Rel
 2.82SCS -1.60HCR 33% Rel -2.30CCR 34% Rel
 1.50LIV 29% Rel 0.00GL 42% Rel -3.80EFC 30% Rel
 AGA 08/23 PTAT +1.1 +1.8UDC +2.0FLC 57%Rel PTI +50

HERITAGE BROOK AP TINSEL-ETV 840003149897921 A2A2

08/23 USDA GPTA +520M -0.19% -11F -0.12% -4P
 -2.4DPR +0.6PL -78NM\$ 20NM%ile -86CM\$ 63% Rel
 2.89SCS-2.40HCR 34% Rel -4.30CCR 39% Rel
 -1.40LIV 35% Rel 1.60GL 41% Rel -2.50EFC 36% Rel
 1 Rec YDev: +2142M -51F +39P
 1 App 08/23 PTAT +0.6 +0.6UDR +1.6FLC 65%Rel CPI -14
 Appraisal: VG 87 @ 2-05 (EEVV+)

Nominated Junior All-American Winter Calf 2021
 Nominated Junior All-American Winter Yearling 2022
 Reserve Intermediate Champion New England Classic 2023
 Reserve Grand Champion New England Classic Jr. Show 2023
 Reserve Intermediate Champion Northeast Spring Show 2023
 Reserve Grand Champion Northeast Spring Jr. Show 2023
 Junior Champion New England Classic 2022
 Junior Champion Northeast Spring Jr. Show 2021
 Dtr: ELMHURST HOWACRES REP TAWNIA
 Reserve Junior Champion New England Classic 2023



- Five (5) #1 IVF embryos
- Sexed semen used for females
- Embryos located at Vytelle, NY
- Resulting calves will be A2A2 by parentage
- Embryos must be in buyer's possession within 60 days of sale

INDIAN ACRES AMERICAN PIE USA000068016348 31GU618 A2A2

08/23 USDA GPTA +54M -0.17% -28F -0.03% -4P
 -2.1DPR +3.1PL -59NM\$ 10NM%ile -57CM\$ 98% Rel
 2.74SCS -3.80HCR 70% Rel -3.20CCR 90% Rel
 0.10LIV 74% Rel 0.80GL 97% Rel -7.00EFC 79% Rel
 AGA 08/23 PTAT +0.1 +0.3UDC +2.0FLC 98%Rel PTI -16

THURSTON FARMS PRIMETIME TRIXIE 840003126794988 A2A2

Appraisal: EX 92 @ 3-07 (EEEEEE)
 1-10 276D 3X 13584M 5.2% 707F 3.3% 443P 103
 2-09 305D 3X 21122M 4.0% 835F 3.3% 700P DHIA
 HM All-American & HM Jr. All-American Sr. Two-Year-Old 2020
 HM All-American & HM Jr. All-American Sr. Three-Year-Old 2021
 Reserve Intermediate Champion NGS-Madison 2019
 Intermediate & Grand Champion NJS-Madison 2019
 Dtrs: HERITAGE BROOK LB TRILLIUM-ET 89 @ 2-07 (90/90)
 2-00 327D 2X 18130M 4.7% 849F 3.6% 654P 97
 Unanimous All-American Junior Two-Year-Old 2022
 All-American Spring Calf 2020
 HERITAGE BROOK LAT TRINITY-ETV 89 @ 2-09 (87/88)
 Nominated Junior All-American Fall Yearling 2022
 HERITAGE BROOK DRONE TRINKET-ETV
 All-American & Jr. All-American Spring Calf 2021

3D: KNAPPS REGIS TROTTER-ETV USA000097000111 A2A2

Appraisal: VG 88 @ 7-09 (VE+VV)
 6-01 365D 3X 32500M 3.9% 1271F 2.9% 958P DHIA

Elmhurst Howacres Rep Tawnia

Reserve Junior Champion NE Classic 2023
 2nd Spring Calf Guernsey Gold Showcase 2023
 Maternal Sister to Lot 14



Heritage Brook Lb Triscuit-ET

Reserve Jr. Champion NE Fall Jr. Show 2020
 Dam of Lot 15
 Maternal Sister to Dam of Lot 14



Heritage Brook Lb Trillium-ET VG-89

Unanimous All-American Jr. Two-Year-Old 2022
 Full Sister to Dam of Lot 15
 Maternal Sister to Dam of Lot 14

LOT 15 4 #1 MISSILE X TRISCUIT IVF EMBRYOS

Breeder & Owner: LIVINGSTON KATIE T
 WEST WINFIELD NY
 315-292-4230 twfarm.sheryl@gmail.com

PA: -390M +0.09% -3F -0.01% -15P -133CM\$ -129NM\$
 +1.0PTAT +1.6UDC +2.2FLC -1.3DPR +0.1PL +10CPI 3.09SCS

VALLEY GEM MISSILE-ETV 840003208696258 200GU125 A2A2

08/23 USDA GPTA -1015M +0.20% -13F +0.08% -20P
 +0.1DPR +0.0PL -182NM\$ 10NM%ile -179CM\$ 56% Rel
 3.12SCS -2.20HCR 31% Rel -0.70CCR 40% Rel
 2.20LIV 35% Rel -0.40GL 40% Rel -4.20EFC 36% Rel
 AGA 08/23 PTAT +1.2 +1.9UDC +1.9FLC 56%Rel PTI +4

HERITAGE BROOK LB TRISCUIT-ET 840003149897905

08/23 USDA GPTA +235M -0.02% +8F -0.09% -9P
 -2.7DPR +0.1PL -76NM\$ 21NM%ile -86CM\$ 55% Rel
 3.06SCS-2.00HCR 33% Rel -5.20CCR 38% Rel
 -1.30LIV 29% Rel 2.30GL 41% Rel 1.10EFC 33% Rel
 0 App 08/23 PTAT +0.8 +1.2UDR +2.5FLC 54%Rel CPI +15
 Reserve Junior Champion Northeast Fall Jr. Show 2020

- Four (4) #1 IVF embryos
- Reverse sorted semen used for females
- Embryos located at Vytelle, NY
- Resulting calves will be A2A2 by extended parentage
- Embryos must be in buyer's possession within 60 days of sale

COULEE CREST NOVAK LAMBEAU-ET 840003128910115 7GU473 A2A2

08/23 USDA GPTA +687M -0.12% +10F -0.10% +5P
 -2.3DPR -3.6PL -184NM\$ 10NM%ile -195CM\$ 97% Rel
 3.09SCS -0.30HCR 63% Rel -2.90CCR 91% Rel
 -5.50LIV 79% Rel 1.30GL 96% Rel -0.70EFC 80% Rel
 AGA 08/23 PTAT -0.1 -0.3UDC -2.4FLC 98%Rel PTI -41

THURSTON FARMS PRIMETIME TRIXIE 840003126794988 A2A2

Appraisal: EX 92 @ 3-07 (EEEEEE)
 1-10 276D 3X 13584M 5.2% 707F 3.3% 443P 103
 2-09 305D 3X 21122M 4.0% 835F 3.3% 700P DHIA
 HM All-American & HM Jr. All-American Sr. Two-Year-Old 2020
 HM All-American & HM Jr. All-American Sr. Three-Year-Old 2021
 Reserve Intermediate Champion NGS-Madison 2019
 Intermediate & Grand Champion NJS-Madison 2019
 Dtrs: HERITAGE BROOK LB TRILLIUM-ET 89 @ 2-07 (90/90)
 2-00 327D 2X 18130M 4.7% 849F 3.6% 654P 97
 Unanimous All-American Junior Two-Year-Old 2022
 All-American Spring Calf 2020
 HERITAGE BROOK LAT TRINITY-ETV 89 @ 2-09 (87/88)
 Nominated Junior All-American Fall Yearling 2022
 HERITAGE BROOK DRONE TRINKET-ETV
 All-American & Jr. All-American Spring Calf 2021



Heritage Brook Lat Trinity-ETV VG-89

Nominated Jr. All-American Fall Yearling 2022
 Intermediate Champion NY Spring Show 2023
 Maternal Sister to Dams of Lots 14 & 15



Knapps AP Two Dozen Roses-ETV EX-90
 1-10 365D 2X 20,770M 5.1% 1,051F 3.7% 763P
 Reserve All-American Jr. Three-Year-Old 2022
 Dam of Lot 16; Maternal Family of Lots 12 - 18

Knapps AP Thirsty-ETV EX-90
 2-10 321D 2X 26,780M 4.0% 1,081F 3.2% 848P
 All-American Yearling in Milk 221
 Full Sister to Dam of Lot 16

LOT 16 CADET AND/OR TORPEDO X TWO DOZEN ROSES IVF EMBRYOS

Breeder & Owner: KNAPP AUSTIN & LANDEN
EPWORTH IA
563-590-5754 austinknapp25@gmail.com

HARTDALE JCP CADET 840003237975540 6GU133 A2A2
 08/23 USDA GPTA +473M -0.10% +4F -0.04% +9P
 -0.1DPR +0.4PL +49NM\$ 40NM%ile +46CM\$ 54% Rel
 2.98SCS -1.40HCR 28% Rel -0.80CCR 30% Rel
 1.00LIV 28% Rel 0.60GL 31% Rel -3.20EFC 28% Rel
 AGA 08/23 PTAT +1.0 +1.4UDC +1.9FLC 50%Rel PTI +52

Cadet Mating:

PA: +176M -0.09% -8F -0.02% +4P -4CM\$ -5NM\$
 +1.0PTAT +1.2UDC +2.1FLC -0.8DPR +1.3PL +27PTI 2.87SCS

LANG HAVEN LONDON TORPEDO 840003233414503 54GU520 A2A2

08/23 USDA GPTA +222M +0.02% +13F +0.04% +14P
 -0.2DPR -0.2PL +71NM\$ 40NM%ile +75CM\$ 58% Rel
 3.01SCS -0.10HCR 29% Rel -0.40CCR 35% Rel
 -0.60LIV 29% Rel 1.60GL 43% Rel -1.70EFC 29% Rel
 AGA 08/23 PTAT +1.8 +2.1UDC +4.2FLC 58%Rel PTI +95

Torpedo Mating:

PA: +50M -0.03% -4F +0.03% +6P +11CM\$ +6NM\$
 +1.4PTAT +1.6UDC +3.2FLC -0.9DPR +1.0PL +49PTI 2.89SCS

KNAPPS AP TWO DOZEN ROSES-ETV USA000097009439 A2A2

08/23 USDA GPTA -122M -0.08% -20F +0.01% -2P
 -1.5DPR +2.2PL -59NM\$ 23NM%ile -53CM\$ 72% Rel
 2.76SCS-3.10HCR 36% Rel -2.90CCR 50% Rel
 -0.70LIV 39% Rel 1.10GL 49% Rel -5.20EFC 40% Rel
 2 Rec YDev: -464M -48F +1P
 3 App 08/23 PTAT +1.0 +1.0UDR +2.2FLC 74%Rel CPI +2
 Appraisal: EX 90 @ 3-10 (EEVEV)
 1-10 365D 2X 20770M 5.1% 1051F 3.7% 763P DHIA
 3-02 365D 2X 20040M 5.1% 1026F 3.8% 755P DHIA
 Reserve All-American Junior Three-Year-Old 2022
 Member, All-American Produce of Dam 2022
 Member, Reserve All-American Best Three Females 2022
 Dtr: KNAPPS DRONE TABBY 88 @ 2-05 (89/88)

- Buyer's choice of two (2) to five (5) total #1 IVF embryos
- Two (2) embryos available by Cadet; Three (3) by Torpedo
- Reverse sorted semen used for females
- Resulting calves will be A2A2 by parentage
- Embryos can be transported via TransOva
- Embryos must be in buyer's possession within 60 days of sale

INDIAN ACRES AMERICAN PIE USA000068016348 31GU618 A2A2

08/23 USDA GPTA +54M -0.17% -28F -0.03% -4P
 -2.1DPR +3.1PL -59NM\$ 10NM%ile -57CM\$ 98% Rel
 2.74SCS -3.80HCR 70% Rel -3.20CCR 90% Rel
 0.10LIV 74% Rel 0.80GL 97% Rel -7.00EFC 79% Rel
 AGA 08/23 PTAT +0.1 +0.3UDC +2.0FLC 98%Rel PTI -16

KNAPPS REGIS TAMBOURINE-ET USA000068023077

Appraisal: 95 @ 7-04 (95/94)
 2-02 359D 2X 20840M 4.4% 914F 3.1% 643P 97
 3-03 365D 2X 23960M 4.6% 1105F 3.2% 770P DHIA
 4-05 365D 2X 30700M 5.0% 1537F 3.1% 943P DHIA
 6-10 365D 2X 40160M*5.1% 2055F*3.3% 1338P* DHIA
 2475D 190040M 7.5%14236F 5.0% 9483P LIFE
 Unan. All-American & Unan. Jr. All-American Aged Cow 2015
 Unanimous Jr. All-American & Res. All-American Five-Year-Old 2013
 All-American & Jr. All-American Jr. Two-Year-Old 2010
 All-American & Jr. All-American Jr. Three-Year-Old 2011
 Junior All-American & Reserve All-American Aged Cow 2016
 Nominated All-American Total Performance Cow 2015
 Grand Champion NJS-Madison 2011, 2015 & 2016
 13 Excellent daughters to date



Knapps Ladysman Tigger-ETV EX-91

Nominated All-American Spring Calf 2018
 Member, Res. All-American Jr. Best 3 Females 2018
 Full Sister to Dam of Lot 17



Knapps Regis Tambourine-ET EX-95

6-10 365D 40,160M* 5.1% 2,055F* 3.3% 1,338P*
 Unanimous All-American Aged Cow 2015
 Granddam of Lots 16 & 17; 3rd Dam of Lot 18

LOT 17 3 #1 COIN COLLECTOR X TAMIKO IVF EMBRYOS

**Breeder & Owner: KNAPP AUSTIN & LANDEN
 EPWORTH IA**

563-590-5754 austinknapp25@gmail.com

PA: -70M +0.01% -2F -0.02% -6P +123CM\$ +124NM\$
 +0.7PTAT +1.3UDC +0.5FLC +0.3DPR +3.5PL +21CPI 2.97SCS

- Three (3) #1 IVF embryos
- Sexed semen used for females
- Embryos can be transported via TransOva
- Embryos must be in buyer's possession within 60 days of sale

DAIRYMAN COIN COLLECTOR 840003219111145 551GU916 A2A2

08/23 USDA GPTA -190M +0.21% +27F +0.01% -4P
 +1.5DPR +6.3PL +449NM\$ 95NM%ile +454CM\$ 56% Rel
 2.83SCS 1.60HCR 31% Rel 1.70CCR 34% Rel
 3.20LIV 29% Rel -0.40GL 44% Rel 6.20EFC 30% Rel
 AGA 08/23 PTAT +0.7 +1.7UDC +0.6FLC 55%Rel PTI +76

KNAPPS LADYSMAN TAMIKO-ETV USA000097005951

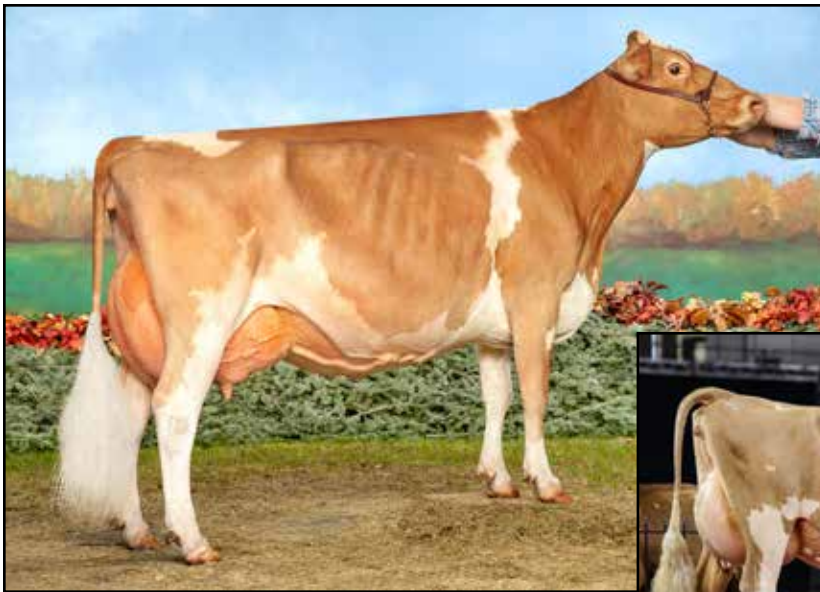
08/23 USDA PTA +51M -0.19% -31F -0.05% -7P
 -0.9DPR +0.6PL -202NM\$ 4NM%ile -209CM\$ 54% Rel
 3.10SCS-1.60HCR 23% Rel -2.80CCR 35% Rel
 -0.80LIV 26% Rel -0.30GL 40% Rel -3.50EFC 28% Rel
 2 Rec YDev: -535M -121F -36P
 1 App 08/23 PTAT +0.7 +0.8UDR +0.3FLC 55%Rel CPI -34
 Appraisal: EX 90 @ 4-05 (EVE+E)
 2-03 365D 2X 16570M 4.3% 716F 3.3% 539P DHIA
 3-10 365D 2X 22300M 4.0% 895F 3.2% 719P DHIA

FLAMBEAU MANOR LADYS MAN USA000078006572 7GU468 A2A2

08/23 USDA GPTA -215M -0.06% -21F -0.03% -13P
 -0.2DPR +0.1PL -235NM\$ 10NM%ile -245CM\$ 96% Rel
 3.33SCS -1.70HCR 57% Rel -2.70CCR 81% Rel
 0.10LIV 55% Rel -1.80GL 98% Rel -3.80EFC 65% Rel
 AGA 08/23 PTAT +0.1 -0.1UDC -0.2FLC 95%Rel PTI -38

KNAPPS REGIS TAMBOURINE-ET USA000068023077

Appraisal: 95 @ 7-04 (95/94)
 2-02 359D 2X 20840M 4.4% 914F 3.1% 643P 97
 3-03 365D 2X 23960M 4.6% 1105F 3.2% 770P DHIA
 4-05 365D 2X 30700M 5.0% 1537F 3.1% 943P DHIA
 6-10 365D 2X 40160M*5.1% 2055F*3.3% 1338P* DHIA
 2475D 190040M 7.5%14236F 5.0% 9483P LIFE
 Unan. All-American & Unan. Jr. All-American Aged Cow 2015
 Unanimous Jr. All-American & Res. All-American Five-Year-Old 2013
 All-American & Jr. All-American Jr. Two-Year-Old 2010
 All-American & Jr. All-American Jr. Three-Year-Old 2011
 Junior All-American & Reserve All-American Aged Cow 2016
 Nominated All-American Total Performance Cow 2015
 Grand Champion NJS-Madison 2011, 2015 & 2016
 13 Excellent daughters to date



Knapps HP Pie Tracy-ETV EX-90 2E
 5-05 365D 2X 20,850M 4.9% 1,026F 3.4% 705P
 Dam of Lot 18



Knapps-Drone-Talk About Me VG-87
 Maternal Sister to Lot 18

LOT 18 4 #1 TORPEDO X TRACY IVF EMBRYOS

Breeder: KNAPP LANDEN
EPWORTH IA
Owner: VANHAITSMA TIM & TAMMY
DORR MI
616-292-8515

- Four (4) #1 IVF embryos
- Reverse sorted semen used for females
- Embryos located at TransOva, WI
- Embryos must be in buyer's possession within 60 days of sale

PA: -67M -0.03% -8F +0.01% -1P -45CM\$ -47NM\$
 +1.2PTAT +1.6UDC +2.9FLC -0.8DPR +1.0PL +37CPI 2.94SCS

LANG HAVEN LONDON TORPEDO 840003233414503 54GU520 A2A2

08/23 USDA GPTA +222M +0.02% +13F +0.04% +14P
 -0.2DPR -0.2PL +71NM\$ 40NM%ile +75CM\$ 58% Rel
 3.01SCS -0.10HCR 29% Rel -0.40CCR 35% Rel
 -0.60LIV 29% Rel 1.60GL 43% Rel -1.70EFC 29% Rel
 AGA 08/23 PTAT +1.8 +2.1UDC +4.2FLC 58%Rel PTI +95

KNAPPS HP PIE TRACY-ETV 840003135940025

08/23 USDA PTA -355M -0.07% -28F -0.02% -15P
 -1.3DPR +2.2PL -165NM\$ 8NM%ile -164CM\$ 54% Rel
 2.86SCS-3.10HCR 23% Rel -2.70CCR 32% Rel
 0.10LIV 26% Rel 0.60GL 36% Rel -7.10EFC 27% Rel
 4 Rec YDev: -1056M -63F -40P
 1 App 08/23 PTAT +0.5 +1.0UDR +1.6FLC 50%Rel CPI -21
 Appraisal: EX 90 @ 6-00 (VEVEE) 2E
 2-03 352D 2X 16090M 5.0% 810F 3.4% 547P 94
 3-03 358D 2X 18590M 4.9% 903F 3.4% 631P 95
 4-05 327D 2X 17450M 5.7% 997F 3.5% 605P 97
 5-05 365D 2X 20850M 4.9% 1026F 3.4% 705P DHIA
 Dtrs: KNAPPS DRONE TINA 85 @ 2-08 (83/85)
 1st Summer Yearling Iowa State Fair 2021
 KNAPPS DRONE TALK ABOUT ME 87 @ 2-01 (86/83)
 5th Yearling in Milk NGS-Madison 2023

INDIAN ACRES AMERICAN PIE USA000068016348 31GU618 A2A2

08/23 USDA GPTA +54M -0.17% -28F -0.03% -4P
 -2.1DPR +3.1PL -59NM\$ 10NM%ile -57CM\$ 98% Rel
 2.74SCS -3.80HCR 70% Rel -3.20CCR 90% Rel
 0.10LIV 74% Rel 0.80GL 97% Rel -7.00EFC 79% Rel
 AGA 08/23 PTAT +0.1 +0.3UDC +2.0FLC 98%Rel PTI -16

KNAPPS MENTOR TAMBORET USA000068045549

Appraisal: 94 @ 6-06 (94/95)
 2-01 318D 2X 16600M 4.7% 783F 3.0% 501P 95
 3-01 363D 2X 22580M 4.7% 1053F 3.0% 685P 96
 4-01 365D 2X 21810M 5.1% 1117F 3.4% 748P DHIA
 6-02 305D 2X 23890M 5.0% 1190F 3.5% 832P 96
 Junior All-American Aged Cow 2017

3D: KNAPPS REGIS TAMBOURINE-ET USA000068023077

Appraisal: 95 @ 7-04 (95/94)
 6-10 365D 2X 40160M*5.1% 2055F*3.3% 1338P* DHIA
 2475D 190040M 7.5%14236F 5.0% 9483P LIFE
 Unan. All-American & Unan. Jr. All-American Aged Cow 2015
 Unanimous Jr. All-American & Res. All-American Five-Year-Old 2013
 All-American & Jr. All-American Jr. Two-Year-Old 2010
 All-American & Jr. All-American Jr. Three-Year-Old 2011
 Junior All-American & Reserve All-American Aged Cow 2016
 Nominated All-American Total Performance Cow 2015
 Grand Champion NJS-Madison 2011, 2015 & 2016
 13 Excellent daughters to date

4D: KNAPPS ACE TAMERA USA000068006299

Appraisal: 93 @ 9-07 (91/92)
 9-07 365D 2X 32350M 4.2% 1351F 3.2% 1036P DHIA
 3038D 178720M 4.4% 7847F 3.4% 6004P LIFE



Prairie Moon T Gun Louroses EX-91
Reserve All-American Yearling in Milk 2019
Dam of Lot 19



Prairie-Moon-Java Lavender-ETV
Maternal Sister to Lot 19

LOT 19 3 #1 JAMES DEAN OR YOGIBEAR X LOUROSES IVF EMBRYOS

Breeder & Owner: SIVESIND LARS D
WAUKON IA
563.794.0275 larssivesind12@gmail.com

- Three (3) #1 IVF embryos
- Buyer's choice of sire - can be a combination of both or just one
- Sexed/Reverse sorted semen used for females
- Embryos located in Waukon, IA - shipping can be arranged via TransOva
- Embryos must be in buyer's possession within 60 days of sale

Sire Choice 1:

SPRINGHILL JAMES DEAN-ETV 840003151591428 551GU911 A2A2

08/23 USDA GPTA -371M +0.15% +9F +0.08% +2P
-1.3DPR +2.0PL +105NM\$ 40NM%ile +116CM\$ 58% Rel
2.82SCS -1.60HCR 33% Rel -2.30CCR 34% Rel
1.50LIV 29% Rel 0.00GL 42% Rel -3.80EFC 30% Rel
AGA 08/23 PTAT +1.1 +1.8UDC +2.0FLC 57%Rel PTI +50

James Dean mating:

PA: -10M -0.02% -4F +0.02% +2P +28CM\$ +24NM\$
+1.1PTAT +1.7UDC +2.2FLC -1.3DPR +1.7PL +37CPI 2.85SCS

Sire Choice 2:

EDGEWATER MEADOWS YOGIBEAR-ET USA000000604917 7GU402 A2A2

08/23 USDA GPTA -498M +0.13% +0F +0.04% -10P
+0.2DPR +1.2PL -36NM\$ 20NM%ile -32CM\$ 99% Rel
2.95SCS -1.20HCR 78% Rel -0.20CCR 95% Rel
0.10LIV 86% Rel -1.10GL 99% Rel -1.00EFC 87% Rel
AGA 08/23 PTAT +1.2 +1.4UDC +1.1FLC 99%Rel PTI +19

Yogibear mating:

PA: -74M -0.03% -9F -0.01% -4P -47CM\$ -47NM\$
+1.1PTAT +1.5UDC +1.7FLC -0.5DPR +1.3PL +22CPI 2.92SCS

PRAIRIE MOON T GUN LOUROSES USA000097006301 A1A2

08/23 USDA GPTA +351M -0.19% -17F -0.05% +2P
-1.2DPR +1.3PL -58NM\$ 24NM%ile -61CM\$ 46% Rel
2.88SCS -1.30HCR 26% Rel -1.30CCR 29% Rel
0.10LIV 26% Rel 0.00GL 28% Rel -3.20EFC 27% Rel
3 App 08/23 PTAT +1.0 +1.5UDR +2.3FLC 61%Rel CPI +24
Appraisal: EX 91 @ 5-06 (EEEEEE)

Reserve All-American Yearling in Milk 2019
Nominated All-American Senior Two-Year-Old 2020
Reserve Junior Champion Iowa State Fair 2018
Dtr: PRAIRIE MOON JAVA LAVENDER-ETV
Supreme Junior Champion Iowa State Fair 2023
2nd Fall Calf NGS-Madison 2023

KNAPPS AP TOP GUN-ET USA000097001280 54GU492

08/23 USDA PTA +570M -0.28% -24F -0.07% +6P
-2.4DPR +1.9PL -54NM\$ 15NM%ile -56CM\$ 67% Rel
2.79SCS -2.60HCR 26% Rel -3.90CCR 38% Rel
-0.80LIV 30% Rel 0.80GL 44% Rel -5.10EFC 32% Rel
AGA 08/23 PTAT +0.7 +0.7UDC +0.7FLC 60%Rel PTI -12

PRAIRIE MOON M LOUMILA USA000097006300



Sniders Garrett Ashanti-ET EX-94 2E
 170,730M 5.2% 8,901F 3.8% 6,434P Lifetime
 All-American Aged Cow 2017
 Dam of Lot 20; Maternal Family of Lots 21 & 22



Sniders HP GG Pie Ashton-ETV EX-91
 4-01 305D 2X 19,230M 4.7% 908F 3.3% 643P
 Reserve All-American Jr. Two-Year-Old 2019
 Maternal Sister to Lot 20

LOT 20 3 #1 JACK DANIELS-P X ASHANTI IVF EMBRYOS

Breeder & Owner: GABLE AARON

NEW ENTERPRISE PA

814.766.3272 homesteadguernseys@yahoo.com

PA: -365M +0.13% +6F +0.09% +2P +37CM\$ +31NM\$
 +1.1PTAT +1.5UDC +2.2FLC -0.4DPR +0.8PL +46PTI 3.05SCS

SPRINGHILL JACK DANIELS-ETV-P 840003151591419 54GU506 A2A2

08/23 USDA GPTA -347M +0.06% -5F +0.08% +2P
 -1.8DPR +0.2PL -88NM\$ 10NM%ile -79CM\$ 58% Rel
 2.92SCS -2.30HCR 30% Rel -3.00CCR 34% Rel
 -0.30LIV 29% Rel 0.00GL 42% Rel -4.20EFC 30% Rel
 AGA 08/23 PTAT +1.3 +1.6UDC +3.3FLC 57%Rel PTI +39

SNIDERS GARRETT ASHANTI-ET USA000068018756 A2A2

08/23 USDA GPTA -382M +0.20% +16F +0.09% +2P
 +1.0DPR +1.3PL +149NM\$ 71NM%ile +153CM\$ 75% Rel
 3.18SCS-0.40HCR 31% Rel 1.10CCR 44% Rel
 1.80LIV 37% Rel 2.00GL 43% Rel -0.60EFC 39% Rel
 4 Rec YDev: -581M +31F +7P
 3 App 08/23 PTAT +0.8 +1.4UDR +1.1FLC 78%Rel CPI +53
 Appraisal: EX 94 @ 12-01 (EEEEEE) 2E
 2-03 365D 2X 16150M 4.8% 777F 3.4% 544P DHIA
 3-07 365D 2X 18000M 5.0% 908F 3.7% 663P DHIA
 5-08 365D 2X 22060M 5.0% 1094F 3.5% 775P DHIA
 7-00 365D 2X 25960M 4.8% 1236F 3.4% 889P DHIA
 9-09 365D 2X 24290M 4.4% 1073F 3.1% 748P DHIA
 3302D 170730M 5.2% 8901F 3.8% 6434P LIFE

All-American Aged Cow 2014

Reserve All-American Aged Cow 2017

Honorable Mention All-American Aged Cow 2019

Member, All-American Exhibitor's Herd 2014

Grand Champion NGS-Louisville 2017

Reserve Grand Champion NGS-Louisville 2014

Total Performance Cow NGS-Harrisburg 2019

Dtrs: SNIDERS HP GG MENTOR AKIRA-ETV 87 @ 5-06 (84/88)

4-03 360D 2X 17840M 4.7% 841F 3.7% 656P DHIA

SNIDERS HP GG PIE ANGEL-ETV 86 @ 4-05 (87/82)

3-02 365D 2X 18454M 5.2% 967F 3.7% 680P DHIA

SNIDERS HP GG PIE ASHTON-ETV 91 @ 5-03 (91/88)

4-01 305D 2X 19230M 4.7% 908F 3.3% 643P 95

Reserve All-American Junior Two-Year-Old 2019

Supreme Champion Missouri State Fair 2023

SNIDERS HP GG ANASTACIA-ETV 88 @ 4-01 (87/82)

3-07 305D 2X 24190M 3.1% 744F 2.9% 706P 67

SNIDERS HP GG ASTONISHING-ETV 86 @ 2-08 (85/88)

2-01 365D 2X 18110M 5.0% 897F 3.7% 664P DHIA

SNIDERS GOLDUST ABSOLUTE-ETV 86 @ 4-03 (84/86)

2-07 365D 2X 21340M 4.2% 898F 3.1% 652P DHIA

• Three (3) #1 IVF embryos

• Sexed semen used for Females

• Resulting calves will be A2A2 by parentage

• Located at Boviteq, WI

• Embryos must be in buyer's possession within 60 days of sale

LAND OF LIVING P GARRETT-ET USA000000603126 72GU134 A2A2

SNIDERS BEN ALIYAH USA000003057464

Appraisal: 93 @ 4-08 (93/93) Gold Star Dam - 2003

2-02 324D 2X 17000M 4.7% 803F 3.4% 572P 95

3-03 304D 2X 17640M 4.3% 758F 3.6% 629P DHIA

4-02 305D 2X 21670M 5.5% 1196F 3.5% 762P 94

5-07 365D 2X 21930M 4.6% 1016F 3.7% 815P DHIA

7-00 365D 2X 12230M 4.7% 576F 3.6% 439P DHIA

1998D 100930M 4.8% 4865F 3.6% 3655P LIFE

Nominated All-American Aged Cow 2004

Dtrs: SNIDERS OMNI AEROLIN 93 @ 8-06 (93/89)

8-03 365D 2X 24440M 4.4% 1076F 3.3% 805P DHIA

Reserve All-American Aged Cow 2009

SNIDERS LORAL AVALON-ET 90 @ 5-03 (90/90)

4-08 365D 2X 27020M 4.9% 1335F 3.4% 908P DHIA

Reserve All-American Total Performance Cow 2009

SNIDERS TILLER AUSTIN-ET 85 @ 2-05 (84/88)

2-04 305D 2X 27730M 4.9% 1364F 3.7% 1032P* 94

All-American Winter Yearling 2005

SNIDERS GARRETT ALLYSON-ET 93 @ 10-06 (95/90)

6-05 365D 2X 27070M 4.5% 1229F 3.4% 917P DHIA

Nominated All-American Junior Three-Year-Old 2010

3D: CEDAR FRINGED ALTANN USA000003045188

Appraisal: 95 @ 6-11 (95/93) Gold Star Dam - 2001

6-04 365D 2X 31150M 4.8% 1486F 3.0% 941P 94

2999D 168160M 4.8% 8035F 3.3% 5522P LIFE



Femara Caden Alyse-ET EX-91 2E
 125,095M 5.5% 6,160F 3.5% 4,282P Lifetime
 Dam of Lot 21
 Maternal Sister to Granddam of Lot 22



Sniders Yogi Anise-ET EX-94
 Granddam of Lot 21
 3rd Dam of Lot 22

LOT 21 4, 5 OR 6 #1 REPUTATION X ALYSE IVF EMBRYOS

**Breeder & Owner: WHEELER BENJAMIN + ERIN AND HOWACRES
 MARIETTA NY**

614.208.3529 guernsey95@yahoo.com

PA: -315M +0.02% -12F +0.01% -10P +53CM\$ +51NM\$
 +0.9PTAT +2.1UDC +1.1FLC +1.4DPR +2.2PL +24CPI 2.93SCS

MISS ME REBAS REPUTATION-TW 840003150515719 6GU109 A2A2

08/23 USDA GPTA -516M -0.01% -25F +0.00% -18P
 +1.2DPR +2.3PL -36NM\$ 20NM%ile -35CM\$ 79% Rel
 2.91SCS 1.40HCR 41% Rel 1.60CCR 45% Rel
 1.10LIV 37% Rel 0.30GL 84% Rel 2.30EFC 40% Rel
 AGA 08/23 PTAT +0.4 +1.6UDC +0.1FLC 73%Rel PTI -17

FEMARA CADEN ALYSE-ET USA000078004145 A2A2

08/23 USDA PTA -113M +0.04% +2F +0.01% -2P
 +1.5DPR +2.1PL +138NM\$ 69NM%ile +140CM\$ 55% Rel
 2.94SCS-0.10HCR 15% Rel 1.50CCR 26% Rel
 0.60LIV 18% Rel 0.10GL 35% Rel 2.20EFC 18% Rel
 5 Rec YDev: -43M +13F +3P

3 App 08/23 PTAT +1.4 +2.6UDR +2.1FLC 55%Rel CPI +64
 Appraisal: EX 91 @ 9-00 (VEVVE) 2E

2-03 314D 3X 16090M 4.6% 746F 3.3% 530P 98
 3-03 305D 3X 17520M 5.0% 868F 3.4% 602P 100
 4-04 291D 3X 18093M 4.6% 840F 3.4% 613P DHIA
 5-03 339D 3X 20500M 4.8% 988F 3.5% 711P 100
 6-04 311D 3X 15430M 5.5% 841F 3.5% 546P 100
 7-04 305D 3X 17280M 5.0% 870F 3.4% 591P 100
 8-10 222D 2X 9893M 4.9% 481F 3.2% 314 RIP
 2296D 125095M 5.5% 6160F 3.5% 4282P LIFE

#154(T) CPI Cow - April 2023

1st Lifetime Production Cow Northeast Spring Show 2023

1st Five-Year-Old New York State Fair 2019

1st Four-Year-Old New York State Fair 2018

1st Senior Two-Year-Old New York State Fair 2016

2nd Aged Cow Guernsey Gold Showcase 2021

2nd Lifetime Production Cow Guernsey Gold Showcase 2023

Dtr: WHEELER ACRES DRONE LIBERTY 85 @ 2-11 (88/82)

- Buyer's choice of four (4) to six (6) #1 IVF embryos
- Sexed semen used for Females
- Resulting calves will be A2A2 by parentage
- Embryos made by TransOva
- Located at Eclipse Genetics, NY
- Embryos must be in buyer's possession within 60 days of sale

RUTTER BROS ATLAS CADEN USA000068043434

08/23 USDA PTA -667M -0.01% -32F +0.06% -12P
 +0.8DPR -1.4PL -202NM\$ 10NM%ile -199CM\$ 78% Rel
 3.07SCS -0.50HCR 15% Rel 0.30CCR 42% Rel
 1.00LIV 20% Rel 0.80GL 81% Rel 0.20EFC 22% Rel
 AGA 08/23 PTAT +0.9 +1.9UDC +1.4FLC 73%Rel PTI -14

SNIDERS YOGI ANISE-ET USA000068028544

Appraisal: 94 @ 7-02 (93/91)

2-07 365D 2X 22590M 5.1% 1147F 3.1% 701P DHIA
 4-05 365D 2X 28590M 5.5% 1578F 3.1% 877P DHIA
 6-10 365D 2X 28190M 5.7% 1598F 3.4% 950P DHIA
 1687D 111330M 5.6% 6210F 3.3% 3683P LIFE

Reserve All-American Senior Two-Year-Old 2012

Nominated All-American Four-Year-Old 2014

Member, All-American Best Three Females 2014

Reserve Senior Champion NGS-Harrisburg 2014

Reserve Intermediate Champion NGS-Louisville 2012

Dtrs: WARWICK MANOR GRUMPY ALIYAH-ET 92 @ 4-03 (93/91)

2-03 365D 2X 20960M 4.9% 1026F 3.4% 711P DHIA

HM All-American & Res. Jr. All-American Winter Yearling 2013

WARWICK MANOR CADEN ANISA-ET 85 @ 4-00 (87/86)

FEMARA GRUMPY AYLA-ET 88 @ 7-04 (88/80)

3-02 325D 2X 20970M 4.3% 911F 3.3% 696P 100

WARWICK MANOR GARRETT ASHTON-ET 86 @ 4-04 (85/86)

4-04 358D 2X 29760M 6.2% 1846F 3.2% 948P DHIA

FEMARA GG HP KRINGLE ALICIA-ET 87 @ 2-10 (86/87)

3D: CEDAR FRINGED ALTANN USA000003045188

Appraisal: 95 @ 6-11 (95/93) Gold Star Dam - 2001

6-04 365D 2X 31150M 4.8% 1486F 3.0% 941P 94

2999D 168160M 4.8% 8035F 3.3% 5522P LIFE



Guernsey Grove HP WB Fame Alexa VG-86
 3-06 365D 3X 31,160M 4.9% 1,519F 3.4% 1,062P
 Nominated Jr. All-American Winter Yearling 2018
 Dam of Lot 22



JC Drone AppleCrown-ETV
 2nd Winter Calf Wisconsin State Fair 2023
 Full Sister to Lot 22

LOT 22 4 #1 DRONE X ALEXA IVF EMBRYOS

Breeder & Owner: CLARK JENNIFER BERG
LA CROSSE WI
(608) 604-0768 clark-jen@hotmail.com

PA: +146M -0.04% +1F -0.03% +0P -135CM\$ -127NM\$
 +1.4PTAT +0.9UDC +2.1FLC -1.8DPR -0.6PL +18CPI 3.29SCS

HI GUERN VIEW LEVI DRONE USA000097004646 94GU959 A2A2

08/23 USDA GPTA +99M -0.08% -10F -0.05% -6P
 -1.4DPR +0.8PL -126NM\$ 10NM%ile -138CM\$ 90% Rel
 3.33SCS -1.60HCR 51% Rel -2.20CCR 60% Rel
 0.20LIV 38% Rel -0.20GL 92% Rel -2.10EFC 47% Rel
 AGA 08/23 PTAT +1.5 +1.2UDC +2.4FLC 87%Rel PTI +14

GUERNSEY GROVE HP WB FAME ALEXA 840003131993748 A2A2

08/23 USDA GPTA +192M +0.01% +11F +0.00% +6P
 -2.1DPR -1.9PL -127NM\$ 12NM%ile -132CM\$ 68% Rel
 3.25SCS -2.30HCR 33% Rel -3.90CCR 43% Rel
 -2.90LIV 36% Rel 0.10GL 44% Rel 2.10EFC 37% Rel
 2 Rec YDev: +1742M +77F +51P
 2 App 08/23 PTAT +1.3 +0.5UDR +1.8FLC 70%Rel CPI +22
 Appraisal: VG 86 @ 6-09 (EEEV+)
 2-01 365D 3X 24410M 5.1% 1249F 3.5% 851P DHIA
 3-06 365D 3X 31160M 4.9% 1519F 3.4% 1062P DHIA
 Nominated Junior All-American Winter Yearling 2018
 Dtr: JC DRONE APPLECROWN-ETV
 2nd Winter Calf Wisconsin State Fair Open & Jr. Show 2023



- Four (4) #1 IVF embryos
- Sexed semen used for Females
- Resulting calves will be A2A2 by parentage
- Located in the GMS tank, Columbus, OH
- Embryos must be in buyer's possession within 60 days of sale

MILLBORNE TILLER FAYES FAME USA000068008443 91GU4843 A2A2

08/23 USDA PTA -199M -0.05% -18F +0.03% -1P
 -4.2DPR -2.8PL -352NM\$ 0NM%ile -358CM\$ 95% Rel
 3.39SCS -4.50HCR 51% Rel -6.90CCR 83% Rel
 -3.50LIV 60% Rel 1.50GL 95% Rel -0.70EFC 65% Rel
 AGA 08/23 PTAT +1.6 +1.9UDC +3.8FLC 95%Rel PTI +0

FEMARA GG HP KRINGLE ALICIA-ET 840003124689907 A2A2

Appraisal: 87 @ 2-10 (86/87)

3D: SNIDERS YOGI ANISE-ET USA000068028544

Appraisal: 94 @ 7-02 (93/91)
 4-05 365D 2X 28590M 5.5% 1578F 3.1% 877P DHIA
 1687D 111330M 5.6% 6210F 3.3% 3683P LIFE
 Reserve All-American Senior Two-Year-Old 2012
 Nominated All-American Four-Year-Old 2014

4D: CEDAR FRINGED ALTANN USA000003045188

Appraisal: 95 @ 6-11 (95/93) Gold Star Dam - 2001
 6-04 365D 2X 31150M 4.8% 1486F 3.0% 941P 94
 2999D 168160M 4.8% 8035F 3.3% 5522P LIFE
 Dam of Aaron, Alstar, Adacka, Alton, Alvin, Activate & Achieve
 Dam of 16 Excellent Daughters
 All-American & Jr. All-American Four-Year-Old 2000
 Reserve All-American & Jr. All-American Jr. Two-Year-Old 1998
 Junior All-American Five-Year-Old 2001
 Honorable Mention All-American Aged Cow 2002
 Grand Champion NGS-Harrisburg 2001

Femara GG HP Kringle Alyssa-ET
 Reserve All-American Winter Calf 2015
 Junior Champion Wisconsin State Show 2015
 Full Sister to Granddam of Lot 22

Dairyman Theo 4928 Dia-EV VG-87 @ 2-06
Full Sister to Lot 23



LOT 23 5 THEO X DINERO IVF EMBRYOS

Breeder & Owner: HOARDS DAIRYMAN FARM
FORT ATKINSON WI

920.728.4822 hdfarm@hoards.com

PA: +541M +0.05% +34F +0.01% +19P +346CM\$ +340NM\$
+0.6PTAT +1.0UDC +1.8FLC -0.6DPR +2.1PL +89CPI 2.84SCS

RIPLEY FARMS NETWORK C THEO 840003146571505 6GU112 A2A2

08/23 USDA GPTA -6M +0.14% +25F +0.01% +1P
+1.2DPR +4.4PL +427NM\$ 90NM%ile +435CM\$ 76% Rel
2.68SCS -1.9SCR 1.20HCR 41% Rel 1.20CCR 41% Rel
2.80LIV 37% Rel 0.40GL 81% Rel 2.80EFC 31% Rel
AGA 08/23 PTAT +0.2 +0.4UDC +0.4FLC 59%Rel PTI +55

DAIRYMAN NOVAK 3311 DINERO 840003134201911 A2A2

-08/23 USDA GPTA +1087M -0.04% +42F +0.00% +37P
-2.4DPR -0.2PL +253NM\$ 87NM%ile +256CM\$ 64% Rel
2.99SCS -2.70HCR 34% Rel -4.20CCR 39% Rel
-1.30LIV 33% Rel 0.50GL 42% Rel 0.90EFC 35% Rel
1 Rec YDev: +3882M +138F +128P
2 App 08/23 PTAT +1.0 +1.6UDR +3.1FLC 68%Rel CPI +123
Appraisal: +84 @ 3-07 (VVEV+)
2-08 365D 3X 26260M 4.4% 1168F 3.7% 969P DHIA
Dtrs: DAIRYMAN THEO 4928 DIA-ETV 87 @ 2-06 (88/82)
DAIRYMAN THEO 4929 DAMA-ETV 82 @ 2-06 (82/82)
Ten additional daughters rank in the top 130 CPI Heifers!

- One (1) #1 and four (4) #2 IVF embryos - five (5) total
- Sexed semen used for Females
- Resulting calves will be A2A2 by parentage
- Resulting calves would rank in the top 50 CPI Heifers - August 2023
- Located at Sunshine Genetics, WI
- Embryos must be in buyer's possession within 60 days of sale

LANG HAVEN GRUMPY NOVAK USA000068042542 7GU446 A2A2

08/23 USDA GPTA +838M -0.08% +24F -0.03% +23P
-2.9DPR -0.1PL +189NM\$ 50NM%ile +186CM\$ 97% Rel
3.07SCS -4.10HCR 73% Rel -5.50CCR 88% Rel
0.20LIV 63% Rel 2.80GL 99% Rel 2.40EFC 73% Rel
AGA 08/23 PTAT +0.4 +0.7UDC +0.0FLC 97%Rel PTI +42

GR-DAIRYMAN SUPERMAN 2574 DAIRY 840003124608036

3D: DAIRYMAN NACHO DREAMA USA000070781145

Appraisal: 74 @ 3-07 (70/77)
3-01 344D 3X 23880M 4.5% 1068F 3.5% 840P 94

4D: DAIRYMAN BINGO DREAM USA000068003397

Appraisal: 83 @ 5-01 (80/86)
4-05 365D 3X 24070M 4.8% 1158F 3.7% 880P DHIA

5D: DAIRYMAN KONG DIADORA USA000003067074

Appraisal: 77 @ 4-08 (77/81)
9-03 320D 3X 21980M 4.5% 993F 3.2% 708P 94
2499D 127080M 4.5% 5702F 3.2% 4101P LIFE



Jensgolden Charming Onadia GP-81
Maternal Sister to Lot 24



Jens Gold Grumpy Oval VG-87
#26(T) CPI Cow August 2023
Maternal Family of Lot 24

LOT 24 5 #1 CHECKMATE X ONALA IVF EMBRYOS

Breeder & Owner: HOARDS DAIRYMAN FARM
FORT ATKINSON WI

920.728.4822 hdfarm@hoards.com

PA: +430M +0.05% +27F +0.03% +18P +396CM\$ +389NM\$
+0.6PTAT +0.9UDC +0.9FLC +0.7DPR +3.8PL +84CPI 2.79SCS

COULEE CREST RICHARD CHECKMATE 840003208361479 6GU116 A2A2

08/23 USDA GPTA +480M -0.09% +5F +0.01% +17P
+0.9DPR +3.0PL +237NM\$ 65NM%ile +241CM\$ 55% Rel
2.86SCS -1.3SCR 0.30HCR 32% Rel 0.30CCR 35% Rel
0.50LIV 29% Rel -1.00GL 42% Rel 4.70EFC 31% Rel
AGA 08/23 PTAT +0.5 +0.8UDC +0.7FLC 54%Rel PTI +60

JENSGOLDEN CORDELL ONALA 840003128753804 A1A2

08/23 USDA GPTA +380M +0.18% +49F +0.04% +19P
+0.5DPR +4.5PL +540NM\$ 99NM%ile +550CM\$ 69% Rel
2.71SCS -0.20HCR 34% Rel 0.10CCR 41% Rel
-0.60LIV 35% Rel 0.60GL 43% Rel 1.50EFC 36% Rel
5 Rec YDev: +1103M +113F +47P
3 App 08/23 PTAT +0.6 +1.0UDR +1.1FLC 71%Rel CPI +107
Appraisal: EX 90 @ 6-03 (EEVEV) Gold Star Dam - 2020
1-11 305D 2X 12000M 5.6% 674F 3.7% 442P 95
3-02 365D 2X 21863M 5.5% 1200F 3.7% 816P DHIA
4-04 339D 2X 22540M 5.7% 1291F 3.7% 836P 96
5-05 365D 3X 29840M 5.3% 1571F 3.6% 1080P DHIA
6-07 365D 3X 29080M 5.7% 1650F 3.6% 1044P DHIA
1877D 120220M 5.6% 6707F 3.7% 4420P LIFE
#8 CPI Cow August 2023
Dam of five of the top 140 CPI heifers - August 2023
Son: DAIRYMAN CHECKMATE OLAF 49GU242 +118GPTI
#1 Genomic Young Sire - August 2023
Dtr: JENSGOLDEN CHARMING ONADIA 81 @ 3-08 (81/81)

- Five (5) #1 IVF embryos
- Reverse sorted semen used for Females
- Resulting calves would rank #65 on the CPI Heifer List - August 2023
- Embryos are FULL SISTERS to the #1 Genomic Young Sire!
- Located at Sunshine Genetics, WI
- Embryos must be in buyer's possession within 60 days of sale

RIPLEY FARMS AARON CORDELL USA000068027378 7GU440 A1A2

08/23 USDA GPTA +234M +0.07% +23F +0.01% +9P
-1.4DPR +0.9PL +122NM\$ 40NM%ile +126CM\$ 96% Rel
2.83SCS -0.30HCR 64% Rel -1.90CCR 85% Rel
-2.60LIV 64% Rel 1.10GL 98% Rel -0.10EFC 69% Rel
AGA 08/23 PTAT +0.3 +0.5UDC +0.6FLC 95%Rel PTI +33

JENSGOLDEN DOUBLE L ONALYN USA000068031379 A1A2

Appraisal: VG 88 @ 8-08 (VEVE+) Gold Star Dam - 2018
2-00 288D 2X 13530M 4.7% 632F 3.3% 443P 91
2-11 311D 2X 15540M 5.0% 778F 3.5% 550P 97
3-10 337D 2X 21380M 4.6% 991F 3.3% 711P 97
4-11 304D 2X 17930M 4.7% 845F 3.4% 604P 97
5-11 308D 2X 19460M 4.9% 952F 3.5% 686P 96
6-11 305D 2X 19570M 4.3% 849F 3.6% 701P 96
8-01 305D 2X 20180M 4.6% 927F 3.4% 691P 96
9-02 326D 2X 20250M 4.7% 947F 3.2% 657P 74
10-03 257D 2X 14960M 4.1% 614F 3.2% 479P 93
2887D 169930M 4.6% 7880F 3.4% 5797P LIFE



Jens Gold Richard Olimint VG-86
3-01 354D 3X 36,490M 3.1% 1,129F 3.1% 1,131P
Maternal Family of Lot 24

Prairie Cream Am Pie Cordova EX-90
 4-07 305D 2X 20,510M 4.3% 891F 3.3% 671P
 HM All-American Sr. Three-Year-Old 2021
 Dam of Lot 25



Four Winds Destiny Child EX-95
 3rd Dam of Lot 25

LOT 25 3 #1 CADET OR MAS X CORDOVA IVF EMBRYOS

Breeder & Owner: PRAIRIE CREAM & VALLEY GEM
CUMBERLAND WI

715.419.0745 vgguernseys@gmail.com
 PA: +405M -0.13% -4F -0.06% +3P +20CM\$ +23NM\$
 +1.1PTAT +1.2UDC +2.7FLC -1.1DPR +1.5PL +38PTI 2.91SCS

HARTDALE JCP CADET 840003237975540 6GU133 A2A2
 08/23 USDA GPTA +473M -0.10% +4F -0.04% +9P
 -0.1DPR +0.4PL +49NM\$ 40NM%ile +46CM\$ 54% Rel
 2.98SCS -1.40HCR 28% Rel -0.80CCR 30% Rel
 1.00LIV 28% Rel 0.60GL 31% Rel -3.20EFC 28% Rel
 AGA 08/23 PTAT +1.0 +1.4UDC +1.9FLC 50%Rel PTI +52

PRAIRIE CREAM AM PIE CORDOVA 840003143485732 A2A2
 08/23 USDA GPTA +337M -0.15% -11F -0.08% -3P
 -2.0DPR +2.6PL -3NM\$ 35NM%ile -7CM\$ 70% Rel
 2.83SCS -2.20HCR 37% Rel -2.70CCR 45% Rel
 0.20LIV 38% Rel 1.20GL 45% Rel -3.20EFC 39% Rel
 3 Rec YDev: +533M -52F -16P
 2 App 08/23 PTAT +1.2 +1.0UDR +3.5FLC 71%Rel CPI +24
 Appraisal: EX 90 @ 5-04 (EEVEV)
 3-04 305D 2X 18620M 4.0% 749F 3.1% 583P 96
 4-07 305D 2X 20510M 4.3% 891F 3.3% 671P 97
 Honorable Mention All-American Sr. Three-Year-Old 2021
 Member, Unanimous All-American Exhibitor's Herd 2021
 Reserve Intermediate Champion Minnesota State Fair 2021

3D: FOUR WINDS DESTINY CHILD USA000003073037

Appraisal: 95 @ 6-10 (93/92)
 6-06 365D 2X 28230M 4.5% 1283F 2.9% 813P DHIA
 Unanimous All-American Junior Three-Year-Old 2004
 Unanimous All-American Junior Two-Year-Old 2003
 All-American Four-Year-Old 2005
 All-American Aged Cow 2008
 All-American Summer Yearling 2002
 Nominated All-American Total Performance Cow 2008
 Grand Champion NGS-Madison 2005 & 2008
 Grand Champion NGS-Louisville 2004 & 2008
 Nine Excellent Daughters

4D: FOUR WINDS MM DEE DESTINY-ET USA000003057100

Appraisal: 93 @ 4-06 (92/92)
 4-00 365D 2X 25410M 4.8% 1210F 3.3% 842P DHIA
 Unanimous All-American Junior Three-Year-Old 2001
 All-American Junior Two-Year-Old 2000
 All-American Four-Year-Old 2002

- Three (3) #1 IVF embryos
- Buyer's choice of Cadet or a mutually agreeable sire
- Sexed semen used for Females
- Resulting calves will be A2A2 by parentage
- Located at Scenic Hill Embryo Transfer, WI
- Embryos must be in buyer's possession within 60 days of sale

INDIAN ACRES AMERICAN PIE USA000068016348 31GU618 A2A2

08/23 USDA GPTA +54M -0.17% -28F -0.03% -4P
 -2.1DPR +3.1PL -59NM\$ 10NM%ile -57CM\$ 98% Rel
 2.74SCS -3.80HCR 70% Rel -3.20CCR 90% Rel
 0.10LIV 74% Rel 0.80GL 97% Rel -7.00EFC 79% Rel
 AGA 08/23 PTAT +0.1 +0.3UDC +2.0FLC 98%Rel PTI -16

FOUR WINDS DC CRYSTAL-ET 840003012311921 A2A2

Appraisal: EX 90 @ 5-04 (EEVVE)
 2-02 365D 3X 24530M 5.3% 1305F 3.2% 791P DHIA
 3-06 365D 3X 27660M 5.7% 1579F 3.1% 864P DHIA
 4-09 365D 3X 27090M 5.4% 1452F 3.2% 878P DHIA

5D: WESTLYNN TOM DEE USA000002963901

Appraisal: 96 @ 10-05
 5-11 365D 2X 26540M 4.8% 1284F 3.6% 961P DHIA
 1807D 110740M 4.7% 5208F 3.6% 4001P LIFE
 All-American 1993, 1994, 1995 & 1996
 Reserve All-American 1991
 Reserve Supreme Champion World Dairy Expo
 Grand Champion NGS-Madison 1994, 1995 & 1996



Retso AP Kiya-ETV EX-90

3-05 358D 2X 28,399M 3.6% 1,036F 3.6% 1,033P RIP
 Dam of Lot 26

LOT 26 5 #1 TORPEDO X KIYA IVF EMBRYOS

**Breeder & Owner: JOHNSON SYLVIA
 TUNBRIDGE VT**

614.208.3529 guernsey95@yahoo.com

PA: +18M -0.03% -5F +0.04% +8P +52CM\$ 46NM\$
 +0.8PTAT +1.1UDC +2.7FLC -0.4DPR +1.3PL +45CPI 2.90SCS

- Five (5) #1 IVF embryos
- Reverse sorted semen used for females
- Embryos located at Vytelle, NY
- Resulting calves will be A2A2 by parentage
- Embryos must be in buyer's possession within 60 days of sale

LANG HAVEN LONDON TORPEDO 840003233414503 54GU520 A2A2

08/23 USDA GPTA +222M +0.02% +13F +0.04% +14P
 -0.2DPR -0.2PL +71NM\$ 40NM%ile +75CM\$ 58% Rel
 3.01SCS -0.10HCR 29% Rel -0.40CCR 35% Rel
 -0.60LIV 29% Rel 1.60GL 43% Rel -1.70EFC 29% Rel
 AGA 08/23 PTAT +1.8 +2.1UDC +4.2FLC 58%Rel PTI +95

RETSO AP KIYA-ETV USA000097007815 A2A2

08/23 USDA GPTA -187M -0.08% -23F +0.04% +1P
 -0.6DPR +2.8PL +21NM\$ 41NM%ile +29CM\$ 68% Rel
 2.79SCS -2.30HCR 36% Rel -1.60CCR 44% Rel
 0.80LIV 37% Rel -0.40GL 44% Rel -2.30EFC 38% Rel
 2 Rec YDev: +825M -39F +51P
 3 App 08/23 PTAT -0.3 +0.1UDR +1.2FLC 63%Rel CPI -6
 Appraisal: EX 90 @ 4-00 (VEVVE)
 1-11 305D 2X 18568M 4.0% 737F 3.4% 638P 95
 3-05 358D 2X 28399M 3.6% 1036F 3.6% 1033P RIP
 Dtrs: HOWACRES R CARA WITH A K 83 @ 2-07 (80/86)
HM Intermediate Champion Northeast Spring Show 2023
2nd Jr. Two-Year-Old New England Classic 2023
 HOWACRES K JEAN-ETV-P
4th Summer Yearling NJS-Harrisburg 2023
 HOWACRES KIYAS KIWI-ETV
5th Summer Yearling NJS-Harrisburg 2023



Howacres K Jean-ETV-P
 Maternal Sister to Lot 26

Kiya!

Honorable Mention All-American Jr. Two-Year-Old 2021
 Nominated All-American Spring Calf 2019
 Nominated All-American Spring Yearling 2020
 Reserve Junior All-American Spring Calf 2019
 HM Junior All-American Junior Two-Year-Old 2021
 Reserve Grand Champion Northeast Spring Show 2023
 Res. Grand Champion Guernsey Gold Showcase 2023
 Res. Grand Champion New England Classic 2023
 HM Grand Champion New York Spring Carousel 2023
 Res. Grand Champion Northeast Spring Jr. Show 2021
 Res. Jr. Champion New England Classic 2019
 Res. Jr. Champion New Hampshire State Show 2019

INDIAN ACRES AMERICAN PIE USA000068016348 31GU618 A2A2

08/23 USDA GPTA +54M -0.17% -28F -0.03% -4P
 -2.1DPR +3.1PL -59NM\$ 10NM%ile -57CM\$ 98% Rel
 2.74SCS -3.80HCR 70% Rel -3.20CCR 90% Rel
 0.10LIV 74% Rel 0.80GL 97% Rel -7.00EFC 79% Rel
 AGA 08/23 PTAT +0.1 +0.3UDC +2.0FLC 98%Rel PTI -16

LUCKYVALE GRUMPY KISS-ET USA000078000733

Appraisal: 88 @ 4-02 (91/77)
 2-07 365D 2X 23860M 4.3% 1016F 3.4% 803P DHIA
HM Junior All-American & Nominated All-American Fall Yearling 2015
Junior Champion New York State Fair Jr. Show 2014
 Dtr: RETSO AP KITKAT-ET 86 @ 3-06 (86/83)
 1-10 299D 2X 15440M 4.5% 694F 3.5% 541P 93
Reserve All-American Yearling in Milk 2020

3D: LUCKYVALE YOGI KIARA USA000068027293

Appraisal: 88 @ 3-11 (88/86)
 2-07 365D 2X 20880M 3.7% 768F 3.3% 687P DHIA
Junior All-American & HM All-American Fall Calf 2010
Junior All-American & Reserve All-American Fall Yearling 2011
Reserve Junior All-American Senior Two-Year-Old 2012
Reserve Junior Champion NGS-Madison 2011
Junior Champion NJS-Madison 2011
 Dtrs: LUCKYVALE GRUMPY KAT-ET 90 @ 4-02 (90/88)
 3-00 319D 3X 23710M 4.7% 1117F 3.5% 819P 88
 LUCKYVALE GRUMPY KAZ-ET 91 @ 4-01 (90/88)
 3-07 365D 2X 33150M 5.1% 1681F 3.5% 1145P 96
Four-Time All-American Nominee

4D: RIPLEY FARMS ADACKA C KATHY USA000068013944

Appraisal: 83 @ 3-04 (79/86)

5D: RIPLEY FARMS G CONNI KATE-ET USA000003083059

Appraisal: 88 @ 3-05 (90/85)
 3-01 305D 3X 22000M 4.4% 969F 3.4% 738P 97

6D: LOW BROOK GOLDFOOT CONNY USA000003067544

Appraisal: 90 @ 4-04 (86/90)
 1715D 123780M 4.7% 5824F 3.6% 4404P LIFE



Springhill Fame Calypso-ETV EX-93
 5-02 365D 28,010M 4.6% 1,296F 3.6% 1,005P
 Maternal Sister to Lot 27



Springhill Tiller Calico-ETV
 Unanimous All-American Fall Yearling 2022
 Maternal Sister to Lot 27

LOT 27 4 #1 JC PENNEY X CONNY IVF EMBRYOS

Breeder & Owner: SPRINGHILL

BIG PRAIRIE OH

330.473.9660 springhill.chris@gmail.com

PA: +310M +0.03% +12F +0.04% +12P +101CM\$ +98NM\$
 +1.1PTAT +0.7UDC +1.7FLC -1.6DPR +0.5PL +40CPI 3.02SCS

- Four (4) #1 IVF embryos
- Reverse sorted semen used for females
- Embryos located at TransOva, MD
- Embryos must be in buyer's possession within 60 days of sale

SPRINGHILL JC PENNEY-ET 840003151591406 6GU114 A2A2

08/23 USDA GPTA +162M +0.06% +5F +0.02% +0P
 -2.9DPR +0.1PL -62NM\$ 10NM%ile -60CM\$ 72% Rel
 2.99SCS +0.4SCR -3.30HCR 43% Rel -4.60CCR 42% Rel
 -0.40LIV 37% Rel 0.80GL 54% Rel -2.30EFC 37% Rel
 AGA 08/23 PTAT +1.2 +1.5UDC +2.5FLC 64%Rel PTI +28

NELLS GLOW CHALLENGE CONNY USA000068028537

08/23 USDA GPTA +444M -0.01% +18F +0.05% +23P
 -0.3DPR +0.9PL +257NM\$ 87NM%ile +261CM\$ 74% Rel
 3.04SCS-2.10HCR 38% Rel -0.60CCR 47% Rel
 -0.60LIV 41% Rel 0.00GL 45% Rel -4.30EFC 40% Rel
 5 Rec YDev: +1210M +54F +55P
 3 App 08/23 PTAT +0.9 -0.1UDR +0.8FLC 75%Rel CPI +51
 Appraisal: 93 @ 7-11 (92/91)
 2-03 365D 2X 19560M 4.8% 930F 3.6% 695P 101
 3-05 305D 2X 21110M 4.5% 954F 3.4% 724P 102
 4-08 365D 2X 25430M 4.5% 1147F 3.4% 872P DHIA
 6-03 334D 2X 24810M 4.8% 1179F 3.6% 887P 102
 7-02 365D 2X 24990M 5.1% 1267F 4.0% 988P DHIA
 10-06 303D 2X 14320M 4.7% 677F 3.2% 463P 96
 2546D 156440M 4.9% 7597F 3.7% 5725P LIFE

Reserve Junior All-American Five-Year-Old 2013

Dtrs: NELLS GLOW CONNY OF SPRINGHILL 86 @ 3-09 (84/86)

2-05 365D 2X 25170M 4.8% 1196F 3.5% 877P DHIA
 SPRINGHILL JUDGMENT CLEMENTINE 87 @ 4-00 (87/87)
 3-07 365D 2X 19400M 4.8% 922F 3.6% 694P DHIA
 SPRINGHILL KOJACK COLUMBIA-ETV 90 @ 5-09 (89/88)
 4-04 365D 2X 32380M 4.1% 1341F 3.4% 1116P DHIA
 SPRINGHILL FAME CALYPSO-ETV 93 @ 6-01 (93/94)
 5-02 365D 2X 28010M 4.6% 1296F 3.6% 1005P DHIA
 SPRINGHILL TILLER CALICO-ETV

Unanimous All-American Fall Yearling 2022

All-American Fall Calf 2021

IDLE GOLD E CHALLENGE-ET USA000000604268 1GU418 A2A2

08/23 USDA GPTA -541M +0.16% +2F +0.10% -1P
 +1.0DPR +0.9PL +135NM\$ 40NM%ile +146CM\$ 98% Rel
 2.88SCS -2.90HCR 81% Rel 1.30CCR 95% Rel
 -0.80LIV 86% Rel -0.20GL 99% Rel -6.30EFC 88% Rel
 AGA 08/23 PTAT -0.3 -0.4UDC +0.9FLC 98%Rel PTI +7

RIPLEY FARMS SP CONI SUE-ET USA000068008643

Appraisal: 82 @ 2-10 (82/85)
 2-04 365D 2X 25550M 4.3% 1086F 3.3% 851P DHIA
 3-10 307D 2X 19580M 4.4% 863F 3.6% 697P 101

3D: LOW BROOK GOLDFOOT CONNY USA000003067544

Appraisal: 90 @ 4-04 (86/90)
 2-00 365D 2X 29014M 4.1% 1193F 3.1% 903P 70
 1715D 123780M 4.7% 5824F 3.6% 4404P LIFE

Nells Glow Challenge Conny EX-93

156,440M 4.9% 7,597F 3.7% 5,725P

Dam of Lot 27





Millborne Hillpoint S Fiesta-ET EX-93
 3-07 365D 21,830M 4.6% 1,010F 3.7% 801P
 Granddam of Lot 28

Fiesta!

- Unanimous All-American Four-Year-Old 2015
- Unanimous All-American Sr. Two-Year-Old 2013
- All-American Fall Yearling 2012
- Honorable Mention All-American Sr. 3-Year-Old 2014
- Reserve All-American & Jr. All-American Fall Calf 2011
- Nominated All-American Five-Year-Old 2016
- Grand Champion NGS-Harrisburg 2014
- 4x National Show Reserve Grand Champion
- 3x National Show Intermediate Champion
- Member, Unan. All-American Dam & Daughter 2015
- Multiple All-American Nominated Daughters

LOT 28 4 #1 JAMES DEAN X FIESTA IVF EMBRYOS

Breeder & Owner: SPRINGHILL

BIG PRAIRIE OH

330.473.9660 springhill.chris@gmail.com

PA: -245M +0.10% +5F +0.08% +6P -79CM\$ -79NM\$
 +1.1PTAT +1.2UDC +1.9FLC -2.2DPR -0.8PL +26CPI 3.19SCS

- Four (4) #1 IVF embryos
- Sexed semen used for Females
- Located at TransOva, MD
- Embryos must be in buyer's possession within 60 days of sale

SPRINGHILL JAMES DEAN-ETV 840003151591428 551GU911 A2A2

08/23 USDA GPTA -371M +0.15% +9F +0.08% +2P
 -1.3DPR +2.0PL +105NM\$ 40NM%ile +116CM\$ 58% Rel
 2.82SCS -1.60HCR 33% Rel -2.30CCR 34% Rel
 1.50LIV 29% Rel 0.00GL 42% Rel -3.80EFC 30% Rel
 AGA 08/23 PTAT +1.1 +1.8UDC +2.0FLC 57%Rel PTI +50

COULEE CREST LUXURY SPIDER-ET USA00000604229 1GU415

08/23 USDA GPTA +285M +0.08% +27F +0.09% +25P
 -2.9DPR -3.4PL -60NM\$ 10NM%ile -57CM\$ 97% Rel
 3.30SCS -0.80HCR 71% Rel -3.10CCR 91% Rel
 -3.70LIV 76% Rel -0.30GL 98% Rel 7.50EFC 79% Rel
 AGA 08/23 PTAT +0.4 +0.0UDC -1.3FLC 97%Rel PTI +15

MILLBORNE HILLPOINT S FIESTA-ET USA000068041840

08/23 USDA GPTA -119M +0.04% +1F +0.08% +10P
 -3.0DPR -3.6PL -263NM\$ 2NM%ile -267CM\$ 77% Rel
 3.55SCS-2.20HCR 36% Rel -4.20CCR 50% Rel
 -3.60LIV 40% Rel 0.00GL 56% Rel 0.00EFC 41% Rel
 3 Rec YDev: -1124M -31F +2P
 5 App 08/23 PTAT +1.0 +0.6UDR +1.8FLC 74%Rel CPI +3
 Appraisal: 93 @ 6-01 (92/93)
 2-04 365D 2X 18430M 5.0% 920F 3.6% 662P DHIA
 3-07 365D 2X 21830M 4.6% 1010F 3.7% 801P DHIA
 5-08 314D 2X 11670M 4.8% 558F 4.0% 469P 97
 Dtrs: MILLBORNE HILLPOINT S FLARE 85 @ 5-06 (81/87)
 3-06 365D 2X 22450M 3.8% 863F 3.4% 769P DHIA
 MILLBORNE HILLPOINT JAC FIZZ-ET 87 @ 3-02 (87/86)
 2-06 365D 2X 22660M 3.4% 775F 3.2% 725P DHIA
 Reserve All-American Spring Calf 2014
 MILLBORNE HP ALYMO FINALLY-ETV 91 @ 5-03 (95/82)
 2-01 365D 2X 18765M 5.2% 977F 3.6% 681P DHIA
 Reserve All-American Junior Two-Year-Old 2018
 MILLBORNE HP DRONE FELICITY-ETV 86 @ 3-03 (86/86)
 2-03 365D 2X 16320M 4.3% 701F 3.4% 557P 97
 MILLBORNE HP FRECKLES-ETV 84 @ 2-10 (83/82)
 MILLBORNE HP FUTURE LADY-ETV 88 @ 3-04 (90/83)
 MILLBORNE HP FABULOUS-ETV 86 @ 4-02 (86/85)
 3-03 365D 2X 22520M 4.3% 962F 3.3% 737P DHIA
 Reserve Jr. All-American & Nom. All-American Summer Yearling 2019

MILLBORNE TILLER FANCY USA000068002577

Appraisal: 92 @ 4-08 (90/92)
 2-00 365D 2X 18190M 4.2% 760F 3.4% 613P DHIA
 3-05 365D 2X 23380M 4.4% 1039F 3.6% 843P DHIA
 4-10 365D 2X 19300M 4.5% 876F 3.5% 680P DHIA
 Nominated All-American Four-Year-Old 2008

3D: R WAY ROYAL OAK FAYE USA000003068719 A2A2

Appraisal: 94 @ 4-03 (94/91)
 4-00 365D 2X 19590M 4.6% 892F 3.5% 688P DHIA
 Unanimous All-American Junior Three-Year-Old 2003
 All-American Junior Two-Year-Old 2002
 Reserve All-American Four-Year-Old 2004
 Honorable Mention All-American Five-Year-Old 2005
 Honorable Mention All-American Summer Yearling 2001
 Intermediate Champion NGS-Madison & Harrisburg 2003
 Reserve Grand Champion NGS-Harrisburg & Louisville 2003
 Reserve Grand Champion NGS-Madison 2004

Dtr: R WAY MILLBORNE FAYES FLAIR 92 @ 3-09 (92/91)

4-05 350D 2X 19750M 4.2% 839F 3.2% 641P 99

4D: CALLUMLEA BILLBOARD FLOSSIE USA000003050310

Appraisal: 89 @ 5-05
 Nominated All-American Fall Calf 1997



Knapps Drone On The Rocks VG-88
 2-02 365D 2X 18,660M 5.3% 993F 3.5% 655P
 HM All-American Jr. 2-Year-Old 2022
 Dam of Lot 29



Knapps Ace On The Money-ET VG-88
 Granddam of Lot 29

LOT 29 2 #1 AMERICAN PIE X ON THE ROCKS IVF EMBRYOS

Breeder & Owner: **KNAPP LANDEN**
EPWORTH IA

563-590-5754 austinknapp25@gmail.com

PA: -88M -0.03% -10F +0.00% -3P -4CM\$ -6NM\$
 +0.8PTAT +0.7UDC +2.3FLC -1.2DPR +2.5PL +16CPI 2.90SCS

INDIAN ACRES AMERICAN PIE USA000068016348 31GU618 A2A2

08/23 USDA GPTA +54M -0.17% -28F -0.03% -4P
 -2.1DPR +3.1PL -59NM\$ 10NM%ile -57CM\$ 98% Rel
 2.74SCS -3.80HCR 70% Rel -3.20CCR 90% Rel
 0.10LIV 74% Rel 0.80GL 97% Rel -7.00EFC 79% Rel
 AGA 08/23 PTAT +0.1 +0.3UDC +2.0FLC 98%Rel PTI -16

KNAPPS DRONE ON THE ROCKS USA000097009749 A2A2

08/23 USDA GPTA -229M +0.11% +9F +0.03% -2P
 -0.2DPR +1.9PL +48NM\$ 48NM%ile +49CM\$ 65% Rel
 3.06SCS -1.40HCR 31% Rel -0.70CCR 36% Rel
 0.50LIV 34% Rel 1.30GL 41% Rel -3.10EFC 31% Rel
 1 Rec YDev: +322M +49F -3P
 1 App 08/23 PTAT +1.4 +1.1UDR +2.6FLC 67%Rel CPI +49
 Appraisal: VG 88 @ 2-05 (VE+VV)
 2-02 365D 2X 18660M 5.3% 993F 3.5% 655P DHIA
 Honorable Mention All-American Junior Two-Year-Old 2022

- Two (2) #1 IVF embryos
- Reverse sorted semen used for Females
- Resulting calves will be A2A2 by parentage
- Embryos can be transported via TransOva
- Embryos must be in buyer's possession within 60 days of sale

HI GUERN VIEW LEVI DRONE USA000097004646 94GU959 A2A2

08/23 USDA GPTA +99M -0.08% -10F -0.05% -6P
 -1.4DPR +0.8PL -126NM\$ 10NM%ile -138CM\$ 90% Rel
 3.33SCS -1.60HCR 51% Rel -2.20CCR 60% Rel
 0.20LIV 38% Rel -0.20GL 92% Rel -2.10EFC 47% Rel
 AGA 08/23 PTAT +1.5 +1.2UDC +2.4FLC 87%Rel PTI +14

KNAPPS ACE ON THE MONEY-ET USA000078006212

Appraisal: 88 @ 2-02 (89/85)
 2-01 300D 2X 12700M 5.8% 732F 3.5% 441P 96
 2-11 333D 2X 9570M 5.9% 569F 3.5% 334P 63
 3-10 365D 2X 15140M 6.2% 941F 3.3% 505P DHIA
 4-11 328D 2X 12930M 6.6% 853F 3.7% 484P 95
 Nominated Junior All-American Junior Two-Year-Old 2017

3D: KNAPPS AARON OLIVIA USA000068029593

Appraisal: 93 @ 5-03 (92/93)
 3-05 365D 2X 26680M 5.4% 1441F 3.1% 819P DHIA
 4-09 365D 2X 24080M 4.9% 1191F 3.2% 775P DHIA
 Junior All-American & HM All-American Four-Year-Old 2013
 HM Junior All-American Five-Year-Old 2014
 Dtrs: KNAPPS OUT OF THIS WORLD-ETV 93 @ 7-04 (93/92)
 5-00 365D 2X 22640M 4.5% 1009F 3.4% 768P DHIA
 KNAPPS ACE OUTRAGEOUS-ETV 93 @ 6-02 (93/91)
 5-10 365D 2X 32830M 5.9% 1942F 3.6% 1193P DHIA



Knapps Aaron Olivia EX-93
 3-05 365D 2X 26,680M 5.4% 1,441F 3.1% 819P
 Junior All-American Four-Year-Old 2013
 3rd Dam of Lot 29



Skoda Grove Legend Roxy VG-89 @ 2-09

Nominated Jr. All-American Winter Calf 2021

1st Sr. 2-Year-Old Guernsey Gold Showcase 2023

Dam of Lot 30

LOT 30 4 #1 MAS X ROXY IVF EMBRYOS

Breeder & Owner: SKODA RYAN & CRYSTIL LEE

CRARYVILLE NY

518-774-1085 skod14@yahoo.com

MUTUALLY AGREEABLE SIRE

SKODA GROVE LEGEND ROXY 840003215003788 A1A2

08/23 USDA GPTA +757M -0.06% +23F +0.00% +25P
-3.0DPR -0.8PL +85NM\$ 56NM%ile +86CM\$ 58% Rel
3.04SCS-0.40HCR 35% Rel -3.30CCR 41% Rel
-3.40LIV 35% Rel -0.40GL 42% Rel 1.60EFC 36% Rel
0 App 08/23 PTAT +1.3 +1.9UDR +1.9FLC 57%Rel CPI +70
2-05 305D 2X 24544M 4.8% 1189F 3.3% 820P Proj. Act.

Appraisal: VG 89 @ 2-09 (VVVVE)

Nominated Junior All-American Winter Calf 2021

3rd Winter Calf NJS-Madison 2021

HM Intermediate Champion GG Showcase & NE Classic 2023

1st Senior Two-Year-Old Guernsey Gold Showcase 2023

2nd Senior Two-Year-Old New England Classic 2023



Maplehurst Royalty Ruby-TRI VG-89

2-06 365D 2X 23,260M 4.2% 980F 2.9% 677P

4th Dam of Lot 30

Millborne Faria Cordell River EX-90

4-00 305D 2X 34,860M* 6.0% 2,084F* 2.9% 1,019P

105,050M 5.1% 5,386F 3.1% 3,213P Lifetime

Granddam of Lot 30

- Four (4) #1 IVF embryos
- Embryos to be by a Mutually Agreeable Sire
- Embryos to be made by January 1, 2024

COULEE CREST GRUMPY LEGEND-ET USA000068045040 7GU451 A2A2

08/23 USDA GPTA +597M -0.09% +11F +0.02% +24P
-3.9DPR -2.5PL -58NM\$ 15NM%ile -58CM\$ 97% Rel
3.15SCS -0.50HCR 67% Rel -5.00CCR 86% Rel
-4.40LIV 64% Rel -1.10GL 98% Rel 4.60EFC 70% Rel
AGA 08/23 PTAT +1.0 +1.1UDC +1.4FLC 96%Rel PTI +34

MILLBORNE FARIA CORDELL RIVER 840003005473277 A1A1

Appraisal: EX 90 @ 3-03 (VEVVE)

2-01 307D 2X 23970M 4.1% 992F 2.9% 707P 95

3-01 306D 2X 27690M 4.6% 1264F 3.1% 867P 98

4-00 305D 2X 34860M*6.0% 2084F*2.9% 1019P 98

1151D 105050M 5.1% 5386F 3.1% 3213P LIFE

2nd Senior Two-Year-Old New England Classic 2019

2nd Senior Three-Year-Old Northeast Fall Show 2020

3rd Senior Three-Year-Old Guernsey Gold Showcase 2020

Dtr: SKODA GROVE LATIMER RUBY 87 @ 4-08 (90/83)

#55(T) CPI Cow August 2023

3D: MILLBORNE FARIA YOGIBEAR RACHEL USA000068038893

Appraisal: 88 @ 4-05 (90/83)

3-11 365D 2X 28590M 4.0% 1133F 3.0% 855P DHIA

4D: MAPLEHURST ROYALTY RUBY-TRI CAN000009594145

Appraisal: 89 @ 3-10 (90/86)

2-06 365D 2X 23260M 4.2% 980F 2.9% 677P DHIA

Member, Reserve All-American Produce of Dam 2010

5D: MAPLEHURST LEWIS'S REGINA CAN000010033559

Appraisal: VG 87 @ 6-10 (85/85) CAN

5-11 365D 2X 24553M 3.8% 937F 3.2% 794P CAN

1868D 112334M 3.8% 4277F 3.2% 3640P LIFE

6D: MAPLEHURST BJ REJOYCE ET CAN200740

Appraisal: VG 85 @ 4-03 (85/80) CAN

4-09 365D 2X 19678M 3.9% 769F 3.5% 690P CAN

7D: LAESCHLAND MERCURY BRIDGET CAN199486

Appraisal: VG 86 @ 3-00 (85/86) CAN

3-11 305D 2X 21740M 4.4% 955F 3.6% 789P CAN

8D: LAESCHLAND TS BIDDY USA000002845925

Appraisal: 94 @ 9-09 Gold Star Dam - 1988

9-03 365D 2X 28930M 4.5% 1298F 3.4% 995P DHIA

3178D 167220M 4.9% 8262F 4.0% 6703P LIFE



Anne!

Reserve All-American Aged Cow 2004
 Junior All-American Four-Year-Old 2002
 Reserve Jr. All-American Aged Cow 2004
 Nominated All-American Total Performance Cow 2005
 Nominated All-American Aged Cow 2005
 Nominated Jr. All-American Aged Cow 2005
 Grand Champion NJS-Madison 2002 & 2004
 Grand Champion Indiana State Fair 2002
 Gold Star Dam Recognition - 2007
 Dam of Advance & Answer

Villa Crest I Anne EX-94 GSD

206,750M 5.3% 11,037F 3.3% 6,862P Lifetime
 3rd Dam of Lot 31

LOT 31 3 #1 MCDREAMY OR MAS X AYLA IVF EMBRYOS

**Breeder & Owner: PRAIRIE CREAM & VALLEY GEM
 CUMBERLAND WI**

715.419.0745 vgguernseys@gmail.com

PA: -281M +0.01% -13F +0.02% -8P -19CM\$ -25NM\$
 +0.2PTAT +0.5UDC +1.3FLC -0.6DPR +2.5PL -2CPI 2.76SCS

VALLEY GEM RICHARD MCDREAMY-ETV USA000097013125 6GU131 A2A2

08/23 USDA GPTA -225M +0.09% +5F +0.07% +5P
 +0.0DPR +2.1PL +163NM\$ 50NM%ile +172CM\$ 58% Rel
 2.86SCS 0.10HCR 30% Rel -0.10CCR 34% Rel
 0.30LIV 29% Rel -0.50GL 39% Rel 4.00EFC 30% Rel
 AGA 08/23 PTAT +1.3 +1.7UDC +2.1FLC 57%Rel PTI +58

VILLA CREST YOGI AYLA USA000078002867

08/23 USDA PTA -616M +0.18% +2F +0.06% -11P
 +0.9DPR +1.8PL +10NM\$ 38NM%ile +19CM\$ 52% Rel
 2.77SCS 0.10HCR 24% Rel 1.50CCR 37% Rel
 1.70LIV 30% Rel -0.80GL 35% Rel -3.70EFC 29% Rel
 5 Rec YDev: -1179M +9F -17P
 3 App 08/23 PTAT +0.2 +0.7UDR +0.6FLC 51%Rel CPI +13
 Appraisal: VG 89 @ 5-11 (EEEEVV)
 1-10 362D 2X 17380M 6.0% 1043F 3.6% 625P 96
 2-11 352D 2X 22770M 6.3% 1432F 3.6% 809P 96
 4-00 327D 2X 20610M 5.6% 1145F 3.6% 734P 95
 4-11 299D 2X 20180M 5.7% 1144F 3.4% 695P 96
 5-10 359D 2X 23330M 5.8% 1362F 3.4% 794P 97
 7-01 255D 2X 11770M 4.9% 572F 3.6% 425P 70
 1954D 116040M 5.8% 6698F 3.5% 4082P LIFE
 3rd Lifetime Production Cow NGS-Louisville 2021

- Three (3) #1 IVF embryos
- Buyer's choice of McDreamy or a mutually agreeable sire
- Sexed semen used for Females
- Located at Scenic Hill Embryo Transfer, WI
- Embryos must be in buyer's possession within 60 days of sale

EDGEWATER MEADOWS YOGIBEAR-ET USA000000604917 7GU402 A2A2

08/23 USDA GPTA -498M +0.13% +0F +0.04% -10P
 +0.2DPR +1.2PL -36NM\$ 20NM%ile -32CM\$ 99% Rel
 2.95SCS -1.20HCR 78% Rel -0.20CCR 95% Rel
 0.10LIV 86% Rel -1.10GL 99% Rel -1.00EFC 87% Rel
 AGA 08/23 PTAT +1.2 +1.4UDC +1.1FLC 99%Rel PTI +19

VILLA CREST MM ANNE ROSE-ET USA000068028685

Dtr: VILLA CREST YOGI ASA 85 @ 4-03 (82/85)
 3-09 365D 2X 21550M 5.8% 1240F 3.3% 709P DHIA

3D: VILLA CREST I ANNE USA000003056840

Appraisal: 94 @ 8-01 (94/92) Gold Star Dam - 2007
 7-00 365D 2X 30180M 5.1% 1525F 3.2% 964P 93
 3354D 206750M 5.3% 11037F 3.3% 6862P LIFE
 Three-time All-American Nominee

4D: VILLA CREST CAP ARIANA USA000003042344

Appraisal: 88 @ 3-06



Springhill Double Jazmin-ET EX-92
 102,290M 6.2% 6,334F 3.8% 3,847P Lifetime
 HM Junior All-American 2012 & 2013
 Granddam of Lot 32



Dix Lee Tiller Joke EX-93
 5-06 365D 2X 31,350M 4.9% 1,543F 3.3% 1,033P
 All-American Jr. Two-Year-Old 2006
 3rd Dam of Lot 32

LOT 32 6 #2 HURRICANE X JORDAN IVF EMBRYOS

Breeder & Owner: SPRINGHILL

BIG PRAIRIE OH

330.473.9660 springhill.chris@gmail.com

PA: -121M +0.14% +18F +0.06% +6P +165CM\$ +159NM\$
 +0.5PTAT +1.1UDC +0.5FLC -0.7DPR +1.3PL +42CPI 2.92SCS

COULÉE CREST LAVAS HURRICANE-ETV 840003214098780 551GU915 A2A2

08/23 USDA GPTA -21M +0.14% +23F +0.06% +9P
 -0.8DPR +1.0PL +204NM\$ 55NM%ile +211CM\$ 56% Rel
 2.91SCS -0.90HCR 30% Rel -1.80CCR 32% Rel
 0.90LIV 27% Rel 0.80GL 36% Rel 1.50EFC 27% Rel
 AGA 08/23 PTAT +0.4 +1.3UDC +0.6FLC 53%Rel PTI +55

SPRINGHILL MM JORDAN-ETV 840003132117652 A2A2

08/23 USDA GPTA -221M +0.13% +12F +0.05% +2P
 -0.6DPR +1.6PL +113NM\$ 63NM%ile +119CM\$ 67% Rel
 2.93SCS-0.80HCR 34% Rel -1.00CCR 43% Rel
 1.80LIV 39% Rel 0.30GL 44% Rel -3.60EFC 40% Rel
 3 Rec YDev: +31M +43F +33P
 4 App 08/23 PTAT +0.6 +0.8UDR +0.4FLC 70%Rel CPI +29
 Appraisal: EX 91 @ 4-08 (EEVEE)
 2-01 339D 2X 17350M 4.3% 740F 3.4% 592P 95
 3-01 348D 2X 16140M 4.7% 751F 3.7% 598P 96
 4-03 365D 2X 26480M 4.8% 1270F 3.7% 986P DHIA

3D: DIX LEE TILLER JOKE USA000068001932

Appraisal: 93 @ 5-08 (93/92)
 5-06 365D 2X 31350M 4.9% 1543F 3.3% 1033P DHIA
 Dam of Jester, Judgment, Jackpot, Lone Star, Jaguar
 Dam of 13 Excellent Daughters
 All-American Jr. 2-Year-Old 2006
 Reserve All-American 5-Year-Old 2009

4D: DIX LEE JIFFY JIPSY USA000003066162

Appraisal: 90 @ 5-01 (88/90)
 4-08 365D 2X 25080M 4.6% 1142F 3.4% 852P DHIA

5D: DIX LEE SMOKEY BEAR JIGGER USA000003036554

Appraisal: 84 @ 4-06
 6-00 350D 2X 18990M 3.8% 728F 3.3% 618P DHIA

6D: DIX LEE BRETTS BIONIC JINGLE USA000003004382

Appraisal: 86 @ 5-06

7D: DIX LEE FAYETTE JINGO USA000002984299

Appraisal: 90 @ 3-11
 4-02 305D 2X 21510M 4.6% 992F 3.6% 768P DHIR

- Six (6) #2 IVF embryos
- Sexed semen used for Females
- Resulting calves will be A2A2 by parentage
- Located at TransOva, MD
- Embryos must be in buyer's possession within 60 days of sale

FOUR WINDS MAGICMAN-ET USA000000602265 72GU120 A1A2

08/23 USDA GPTA -361M +0.03% -12F +0.02% -9P
 -1.6DPR -1.2PL -237NM\$ 10NM%ile -234CM\$ 97% Rel
 2.95SCS -0.80HCR 58% Rel -1.40CCR 90% Rel
 2.60LIV 79% Rel -0.60GL 95% Rel -10.80EFC 80% Rel
 AGA 08/23 PTAT -0.1 -0.9UDC -0.3FLC 98%Rel PTI -46

SPRINGHILL DOUBLE JAZMIN-ET USA000068031518

Appraisal: 92 @ 5-03 (91/91)
 1-08 349D 2X 19490M 5.4% 1047F 3.5% 685P 101
 2-08 365D 2X 21090M 6.5% 1373F 3.5% 732P DHIA
 3-11 361D 2X 26290M 5.1% 1329F 4.0% 1047P 96
 5-00 365D 2X 28270M 7.3% 2060F*3.8% 1073P DHIA
 1628D 102290M 6.2% 6334F 3.8% 3847P LIFE
 Honorable Mention Junior All-American Yearling in Milk 2013
 Honorable Mention Junior All-American Winter Calf 2012
 Dtrs: SPRINGHILL LAREDO JOSLIN-ET 85 @ 6-11 (80/84)
 3-01 365D 2X 26200M 5.3% 1395F 3.5% 917P DHIA
 SPRINGHILL LAREDO JAZLYNN-ET 91 @ 6-00 (92/92)
 Gold Star Dam - 2022
 3-07 365D 2X 25770M 5.5% 1421F 3.6% 920P DHIA
 SPRINGHILL GOTCHA JOLEE 88 @ 6-08 (90/78)
 SPRINGHILL MM JOYRIDE-ETV 85 @ 2-04 (86/82)
 SPRINGHILL LATIMER JUMANJI-ET 87 @ 5-03 (91/78)
 4-07 305D 2X 18960M 5.7% 1081F 3.9% 730P 97
 SPRINGHILL RO LEVI JAYLA-ETV 85 @ 2-10 (84/85)
 1-11 365D 2X 21570M 4.3% 924F 3.5% 760P DHIA

8D: DIX LEE RON JINGER USA000002919129

Appraisal: 84 @ 3-07

9D: ROMELLAS PATRICIAN JINGLE USA000002860737

Appraisal: 85 @ 5-08
 3-06 324D 2X 18480M 4.4% 804F 3.5% 640P DHIA



Maplehurst Les Marzipan EX-92
Two-Time Canadian Grand Champion
Granddam of Lot 33



Gladheart Drone Meagan-ET
HM All-American Spring Calf 2022
Maternal Sister to Dam of Lot 33

LOT 33 3 #1 LOCKLEY-P X MAXINE-P IVF EMBRYOS

Consignor: LEVESQUE ANDREW
RUPERT VT

407.907.9796 sapphiregenetics@yahoo.com

GOLDEN I LOCKLEY-ET-P 840003200644351 54GU508 A2A2

08/23 USDA GPTA -279M +0.06% -2F +0.06% +1P
+2.2DPR +2.5PL +140NM\$ 45NM%ile +149CM\$ 66% Rel
2.81SCS 0.70HCR 29% Rel 2.00CCR 31% Rel
1.80LIV 30% Rel 1.00GL 40% Rel -2.60EFC 27% Rel
AGA 08/23 PTAT +0.4 +0.6UDC +0.8FLC 56%Rel PTI +38

GLADHEART JD MAXINE-ET-P 840003227859536

- Three (3) #1 IVF embryos
- Reverse sorted semen used for Females
- Resulting calves will be A2A2 by extended parentage
- Embryos made by Vytelle
- Located in Rupert, VT
- Embryos must be in buyer's possession within 60 days of sale

SPRINGHILL JACK DANIELS-ETV-P 840003151591419 54GU506 A2A2

08/23 USDA GPTA -347M +0.06% -5F +0.08% +2P
-1.8DPR +0.2PL -88NM\$ 10NM%ile -79CM\$ 58% Rel
2.92SCS -2.30HCR 30% Rel -3.00CCR 34% Rel
-0.30LIV 29% Rel 0.00GL 42% Rel -4.20EFC 30% Rel
AGA 08/23 PTAT +1.3 +1.6UDC +3.3FLC 57%Rel PTI +39

MAPLEHURST LES MARZIPAN CAN000009594210 A2A2

Appraisal: EX 92 @ 7-10 (EEEEEE)
Grand Champion Canadian National Show 2015 & 2016
2nd Lifetime Production Cow NGS-Harrisburg 2018
Son at Masterpiece: GLADHEART MICHELANGELO-ET
Dtrs: GLADHEART MARIETTA-ET 83 @ 2-05 (86/85)
1-11 338D 2X 21910M 5.2% 1137F 3.4% 742P 96
GLADHEART DRONE MEAGAN-ET
Honorable Mention All-American Spring Calf 2022

3D: MAPLEHURST TURLEYS MARISSA CAN000007433708

Appraisal: EX-90 @ 8-09 CAN
6-01 365D 2X 21233M 4.7% 992F 3.5% 743P
Dtr: MAPLEHURST LES MAYA 91 @ 6-07 (94/83)
3-06 304D 3X 19090M 4.8% 925F 3.3% 636P DHIA
Honorable Mention All-American Senior Three-Year-Old 2015

4D: COMFORT FARMS TRADITION MARY CAN000010034087

Appraisal: VG-85 @ 2-11 CAN

5D: COMFORT FARMS NORMA JEAN CAN10031892

Appraisal: GP-80 @ 2-05 CAN

6D: COMFORT FARMS NERNE CAN196975

Appraisal: VG-86 @ 2-08 CAN

7D: COMFORT FARMS NELDA CAN192364

Appraisal: GP-84 @ 2-10 CAN



Gladheart JD Maxine-ET-P

Junior Champion, Addison, Vermont County Fair &
Field Days 2022
Dam of Lot 33



Craig Moor Pilot Belynda VG-85
 3-01 305D 3X 18,590M 4.6% 847F 3.2% 601P Proj.
 2020 New York Scholarship Calf
 Dam of Lot 34

LOT 34 3 #1 GOLDMINE X BELYNDA IVF EMBRYOS

**Breeder & Owner: CHUHTA ALLISON
 CAMBRIDGE NY**

518.677.2628 steven.m.chuhta@zoetis.com

PA: -327M +0.11% +4F +0.04% -5P -11CM\$ -14NM\$
 +0.9PTAT +1.2UDC +1.2FLC -0.6DPR +0.6PL +21CPI 3.03SCS

TERPHILL JAMES DEAN GOLDMINE-ETV 840003214098874 6GU126 A2A2

08/23 USDA GPTA -204M +0.10% +8F +0.08% +7P
 -1.3DPR +0.7PL +24NM\$ 35NM%ile +30CM\$ 52% Rel
 3.09SCS -1.90HCR 28% Rel -2.10CCR 30% Rel
 0.50LIV 27% Rel -0.90GL 31% Rel -5.70EFC 27% Rel
 AGA 08/23 PTAT +1.2 +1.7UDC +2.1FLC 50%Rel PTI +50

CRAIG MOOR PILOT BELYNDA USA000068031880

08/23 USDA PTA -450M +0.12% -1F -0.01% -16P
 +0.2DPR +0.5PL -51NM\$ 25NM%ile -52CM\$ 44% Rel
 2.97SCS 0.10HCR 18% Rel 0.10CCR 24% Rel
 0.40LIV 16% Rel 1.40GL 31% Rel 1.20EFC 18% Rel
 2 Rec YDev: -2161M -47F -81P
 2 App 08/23 PTAT +0.5 +0.7UDR +0.3FLC 43%Rel CPI -8
 Appraisal: VG 85 @ 3-07 (VV+++)
 3-01 305D 3X 18590M 4.6% 847F 3.2% 601P Proj. Act.
 2020 New York Scholarship Calf

- Three (3) #1 IVF embryos
- Sexed semen used for females
- Resulting calves will be A2A2 by extended parentage
- Embryos located at Vytelle, NY
- Embryos must be in buyer's possession within 60 days of sale

LINDRIAN GRUMPY PILOT-ET CAN000011632409 200GU307 A2A2

08/23 USDA GPTA -413M +0.12% +1F +0.06% -3P
 +0.1DPR +1.2PL +84NM\$ 40NM%ile +96CM\$ 88% Rel
 2.69SCS -0.60HCR 49% Rel 0.80CCR 67% Rel
 1.50LIV 45% Rel 2.50GL 91% Rel -0.40EFC 49% Rel
 AGA 08/23 PTAT +0.6 +1.6UDC +0.9FLC 84%Rel PTI +30

CRAIG MOOR COPPER BIANCA USA000068031872 A2A2

Appraisal: G 77 @ 2-09 (G+GFG)
 2-00 286D 2X 11160M 4.9% 542F 3.1% 346P 92

3D: CRAIG MOOR CAMERO BELL USA000068031856

Appraisal: 82 @ 3-09 (78/80)

4D: CRAIG MOOR SMOKEYS BETTY LOU USA000003078910

Appraisal: 83 @ 4-09 (78/82)
 4-02 277D 2X 19960M 5.0% 1000F 3.4% 669P 94
 2183D 124120M 4.8% 5948F 3.4% 4190P LIFE

5D: CRAIG MOOR HOTSHOTS BONITA USA000003068433

Appraisal: 90 @ 4-08 (88/90)
 4-00 305D 2X 19140M 4.5% 867F 3.4% 652P 94



Jens Gold Coin Breezy Charise VG-85
 2-00 344D 2X 23,688M 3.6% 856F 3.0% 701P
 Res. Grand Champion WI State Fair Jr. Show 2021
 Dam of Lots 35 & 36

LOT 35 3 #1 TORPEDO X CHARISE IVF EMBRYOS

**Breeder & Owner: NAFZGER CYNTANAH
 MINERAL POINT WI**

608.575.4259 nafzgercd24@yahoo.com

PA: +203M -0.02% +5F -0.01% +6P +95CM\$ +95NM\$
 +1.0PTAT +0.9UDC +1.8FLC +0.3DPR +0.9PL +46CPI 3.01SCS

- Three (3) #1 IVF embryos
- Sexed semen used for females
- Embryos located in Mineral Point, WI
- Resulting calves will be A2A2 by parentage
- Embryos must be in buyer's possession within 60 days of sale

LANG HAVEN LONDON TORPEDO 840003233414503 54GU520 A2A2

08/23 USDA GPTA +222M +0.02% +13F +0.04% +14P
 -0.2DPR -0.2PL +71NM\$ 40NM%ile +75CM\$ 58% Rel
 3.01SCS -0.10HCR 29% Rel -0.40CCR 35% Rel
 -0.60LIV 29% Rel 1.60GL 43% Rel -1.70EFC 29% Rel
 AGA 08/23 PTAT +1.8 +2.1UDC +4.2FLC 58%Rel PTI +95

JENS GOLD COIN BREEZY CHARISE 840003203205087 A2A2

PA: +184M -0.05% -1F -0.05% -3P +114CM\$ +118NM\$
 +0.1PTAT -0.3UDC -0.7FLC +0.8DPR +2.0PL -4CPI 3.00SCS
 3 App 08/23 PTAT +0.1 -0.3UDR -0.7FLC 36%Rel
 Appraisal: VG 85 @ 3-11 (VV+V+)
 2-00 344D 2X 23688M 3.6% 856F 3.0% 701P DHIA
 3-02 305D 2X 19825M 3.8% 753F 3.2% 633P DHIA
 Reserve Grand Champion Wisconsin State Fair Jr. Show 2021

JENS GOLD COPPER COIN 840003134140210 6GU100 A2A2

08/23 USDA GPTA +70M +0.07% +15F -0.04% -5P
 +1.3DPR +4.3PL +286NM\$ 70NM%ile +286CM\$ 86% Rel
 2.80SCS 3.00HCR 48% Rel 2.30CCR 54% Rel
 0.80LIV 38% Rel -1.00GL 93% Rel 5.80EFC 44% Rel
 AGA 08/23 PTAT +0.5 +1.2UDC +0.9FLC 83%Rel PTI +52

JENS GOLD WINSLOW BREEZY CHARI 840003134140251 A1A2

Appraisal: G 78 @ 2-05 (+VG+F)

3D: JENS GOLD NAVAJO BREEZY CHERYL 840003014321870 A2A2

Appraisal: 81 @ 2-09 (80/80)

LOT 36 3 #1 TORPEDO X CHARISE IVF EMBRYOS

**Breeder & Owner: NAFZGER CYNTANAH
 MINERAL POINT WI**

608.575.4259 nafzgercd24@yahoo.com

PA: +203M -0.02% +5F -0.01% +6P +95CM\$ +95NM\$
 +1.0PTAT +0.9UDC +1.8FLC +0.3DPR +0.9PL +46CPI 3.01SCS

- Three (3) #1 IVF embryos
- Sexed semen used for females
- Embryos located in Mineral Point, WI
- Resulting calves will be A2A2 by parentage
- Embryos must be in buyer's possession within 60 days of sale

LANG HAVEN LONDON TORPEDO 840003233414503 54GU520 A2A2

08/23 USDA GPTA +222M +0.02% +13F +0.04% +14P
 -0.2DPR -0.2PL +71NM\$ 40NM%ile +75CM\$ 58% Rel
 3.01SCS -0.10HCR 29% Rel -0.40CCR 35% Rel
 -0.60LIV 29% Rel 1.60GL 43% Rel -1.70EFC 29% Rel
 AGA 08/23 PTAT +1.8 +2.1UDC +4.2FLC 58%Rel PTI +95

JENS GOLD COIN BREEZY CHARISE 840003203205087 A2A2

PA: +184M -0.05% -1F -0.05% -3P +114CM\$ +118NM\$
 +0.1PTAT -0.3UDC -0.7FLC +0.8DPR +2.0PL -4CPI 3.00SCS
 3 App 08/23 PTAT +0.1 -0.3UDR -0.7FLC 36%Rel
 Appraisal: VG 85 @ 3-11 (VV+V+)
 2-00 344D 2X 23688M 3.6% 856F 3.0% 701P DHIA
 3-02 305D 2X 19825M 3.8% 753F 3.2% 633P DHIA
 Reserve Grand Champion Wisconsin State Fair Jr. Show 2021

JENS GOLD COPPER COIN 840003134140210 6GU100 A2A2

08/23 USDA GPTA +70M +0.07% +15F -0.04% -5P
 +1.3DPR +4.3PL +286NM\$ 70NM%ile +286CM\$ 86% Rel
 2.80SCS 3.00HCR 48% Rel 2.30CCR 54% Rel
 0.80LIV 38% Rel -1.00GL 93% Rel 5.80EFC 44% Rel
 AGA 08/23 PTAT +0.5 +1.2UDC +0.9FLC 83%Rel PTI +52

JENS GOLD WINSLOW BREEZY CHARI 840003134140251 A1A2

Appraisal: G 78 @ 2-05 (+VG+F)

3D: JENS GOLD NAVAJO BREEZY CHERYL 840003014321870 A2A2

Appraisal: 81 @ 2-09 (80/80)

LOT 37 3 #1 SPARTA-P X PIMENTO IVF EMBRYOS

Breeder & Owner: PRAIRIE CREAM & VALLEY GEM
CUMBERLAND WI

715.419.0745 vgguernseys@gmail.com

PA: +596M -0.07% +16F -0.03% +16P +122CM\$ +121NM\$
+1.7PTAT +1.9UDC +4.3FLC -1.3DPR +0.7PL +91CPI 2.89SCS

KADENCE JAVA SPARTA-P USA000097013057 6GU130 A2A2

08/23 USDA GPTA +643M -0.09% +14F +0.03% +27P
-2.3DPR -0.3PL +78NM\$ 40NM%ile +85CM\$ 50% Rel
2.85SCS -1.60HCR 26% Rel -3.20CCR 27% Rel
-1.70LIV 25% Rel 1.20GL 30% Rel -0.30EFC 26% Rel
AGA 08/23 PTAT +1.5 +1.6UDC +4.0FLC 51%Rel PTI +91

SUNNY MEAD COPPER PIMENTO USA000097004924 A2A2

08/23 USDA GPTA +548M -0.04% +18F -0.08% +4P
-0.3DPR +1.7PL +164NM\$ 75NM%ile +158CM\$ 66% Rel
2.93SCS 1.10HCR 35% Rel -0.40CCR 42% Rel
-1.10LIV 35% Rel 0.30GL 43% Rel 4.10EFC 36% Rel
3 Rec YDev: +916M +30F +5P
5 App 08/23 PTAT +1.9 +2.2UDR +4.6FLC 71%Rel CPI +91
Appraisal: EX 93 @ 5-05 (EEEEEE)
2-03 327D 2X 15270M 4.2% 648F 2.9% 447P 97
4-07 305D 2X 14510M 4.8% 698F 3.2% 470P 97
#35(T) CPI Cow August 2023
#9(T) PTAT Cow August 2023

- Three (3) #1 IVF embryos
- Sexed semen used for Females
- Resulting calves will be A2A2 by parentage
- Resulting calves would rank in top 5 PTAT Heifers & Top 40 CPI Heifers!
- Located at Scenic Hill Embryo Transfer, WI
- Embryos must be in buyer's possession within 60 days of sale

JENS GOLD AARON COPPER-ET USA000068027038 14GU318 A2A2

08/23 USDA GPTA +105M +0.03% +10F -0.04% -3P
-0.9DPR +1.2PL +140NM\$ 45NM%ile +139CM\$ 98% Rel
2.86SCS 2.40HCR 74% Rel -0.80CCR 90% Rel
-2.10LIV 70% Rel 0.80GL 99% Rel 5.90EFC 77% Rel
AGA 08/23 PTAT +0.9 +1.4UDC +1.4FLC 98%Rel PTI +28

SUNNY MEAD BUCKYS PENNY-TW USA000078000487

Appraisal: VG 86 @ 6-11 (VVVVV)
2-03 324D 2X 11810M 4.7% 559F 3.2% 376P 97
3-03 330D 2X 16670M 5.1% 855F 3.3% 557P 97
4-04 309D 2X 18100M 4.7% 851F 3.2% 584P 98
5-04 307D 2X 16960M 4.6% 785F 3.3% 555P 98
6-04 342D 2X 20300M 4.6% 936F 3.3% 667P 98
7-05 265D 2X 13230M 4.5% 591F 3.4% 448P 95

3D: SUNNY MEAD LAREDO PRISM-TW USA000068045438

Appraisal: 87 @ 4-04 (86/83)
3-10 329D 2X 18350M 4.4% 804F 3.1% 564P 98
SUNNY MEAD BUCKYS PESO-TW 90 @ 8-00 (89/88)
6-02 305D 2X 21060M 4.6% 966F 3.0% 636P DHIA



Rocky Hill Prada Holiday EX-94 3E
 114,210M 4.3% 4,932F 3.2% 3,668P Lifetime
 HM All-American Lifetime Production Cow 2022
 Dam of Lot 75



Rocky Hill Java Ho Ho Ho-ETV
 Maternal Sister to Lot 75

LOT 75 4 #1 MAS X HOLIDAY IVF EMBRYOS

Breeder & Owner: MCCARTY ELIJAH AND HENRY
HUGHESVILLE PA
813.523.1168 rockyhill91@yahoo.com

- Four (4) #1 IVF embryos
- Embryos to be by a Mutually Agreeable Sire
- Embryos to be made by January 1, 2024

MUTUALLY AGREEABLE SIRE

ROCKY HILL PRADA HOLIDAY USA000078000986 A1A2

08/23 USDA GPTA -478M +0.06% -11F +0.00% -16P
 -1.2DPR +0.7PL -165NM\$ 8NM%ile -165CM\$ 67% Rel
 2.98SCS -1.90HCR 32% Rel -2.60CCR 42% Rel
 -0.40LIV 34% Rel 1.80GL 42% Rel -1.40EFC 34% Rel
 5 Rec YDev: -1355M -28F -51P
 4 App 08/23 PTAT +1.3 +0.8UDR +3.1FLC 69%Rel CPI +0
 Appraisal: EX 94 @ 9-08 (EEVEE) 3E
 2-02 313D 2X 15320M 4.3% 664F 3.3% 510P 96
 3-02 287D 2X 15930M 4.4% 700F 3.3% 523P 97
 4-02 278D 2X 18220M 4.0% 729F 3.2% 582P 95
 5-02 297D 2X 20570M 4.2% 855F 3.2% 657P 95
 6-02 325D 2X 19330M 4.1% 795F 3.1% 602P 96
 7-05 365D 2X 21040M 4.7% 990F 3.1% 657P DHIA
 1990D 114210M 4.3% 4932F 3.2% 3668P LIFE

Honorable Mention All-American Lifetime Production Cow 2021
1st Lifetime Production Cow NGS-Harrisburg 2021
2nd Senior Two-Year-Old NGS-Harrisburg 2016
2nd Lifetime Production Cow NGS-Harrisburg 2023
 Dtrs: ROCKY HILL NOVAK HOORAY
Nominated All-American Summer Yearling 2022
 ROCKY HILL KOJACK HIT ON ME-ETV
Nominated Junior All-American Spring Yearling 2022
 ROCKY HILL JAVA HO HO HO-ETV
1st Winter Calf NJS-Harrisburg 2023
1st Winter Calf Guernsey Gold Showcase 2023

INDIAN ACRES PRADA-ET USA000068026022 200GU305 A1A2

08/23 USDA GPTA -106M -0.08% -18F -0.03% -8P
 -2.1DPR +2.0PL -65NM\$ 10NM%ile -65CM\$ 95% Rel
 2.85SCS -0.80HCR 62% Rel -3.80CCR 84% Rel
 -0.50LIV 67% Rel 1.90GL 97% Rel 0.60EFC 69% Rel
 AGA 08/23 PTAT +0.6 +1.0UDC +3.5FLC 95%Rel PTI +7

ROCKY HILL DYNAMIC HAVEN USA000068045820

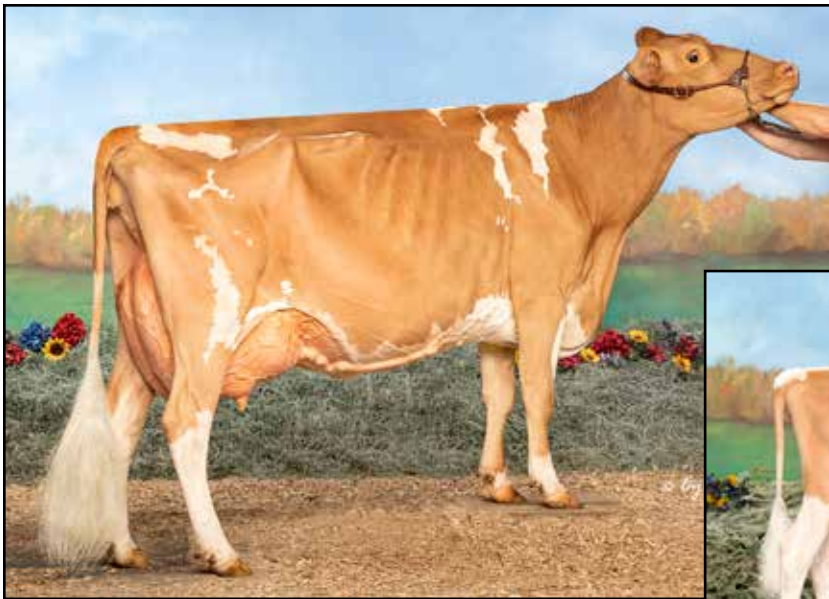
Appraisal: 90 @ 5-10 (88/90)
 2-03 303D 2X 13330M 4.5% 601F 3.4% 448P 94
 3-03 365D 2X 18650M 4.7% 879F 3.5% 662P DHIA
 4-07 301D 2X 20180M 4.5% 917F 3.4% 694P 97
 5-07 362D 2X 17920M 4.5% 804F 3.6% 649P 98
1st Senior Three-Year-Old New York Spring Show 2015
 ROCKY HILL PILOT HOLLISTER 87 @ 5-00 (87/82)
 4-10 365D 2X 23230M 4.6% 1066F 3.3% 771P DHIA

3D: ROCKY HILL MISSION HARLEY USA000068021593

Appraisal: 88 @ 4-09 (87/90)

4D: NEBZ NOLL HOPE HOLLY-TW USA000068010288

Appraisal: 86 @ 4-01 (84/90)
 3-02 355D 2X 19190M 4.3% 816F 3.3% 625P DHIA
Reserve Junior All-American Winter Calf 2006
Reserve Junior All-American Winter Yearling 2007



Rocky Hill Gamble Luscious EX-94 2E
 4-00 365D 2X 20,980M 3.3% 689F 2.7% 566P
 Nom. All-American Five-Year-Old 2022
 Dam of Lot 76



Rocky Hill Copper Liliann EX-91
 Maternal Sister to Dam of Lot 76

LOT 76 4 #1 MAS X LUSCIOUS IVF EMBRYOS

Breeder & Owner: MCCARTY ELIJAH AND HENRY
HUGHESVILLE PA
813.523.1168 rockyhill91@yahoo.com

- Four (4) #1 IVF embryos
- Embryos to be by a Mutually Agreeable Sire
- Embryos to be made by January 1, 2024

MUTUALLY AGREEABLE SIRE

ROCKY HILL GAMBLE LUSCIOUS USA000097003732 A2A2

08/23 USDA GPTA +693M -0.26% -16F -0.14% -3P
 -1.5DPR +0.1PL -128NM\$ 12NM%ile -141CM\$ 67% Rel
 2.98SCS -1.60HCR 29% Rel -1.90CCR 43% Rel
 -0.90LIV 31% Rel 0.10GL 41% Rel -2.40EFC 32% Rel
 3 Rec YDev: +999M -70F -29P
 6 App 08/23 PTAT +1.2 +0.9UDR +1.6FLC 58%Rel CPI -2
 Appraisal: EX 94 @ 6-05 (EEVEE) 2E
 2-07 365D 2X 20420M 3.3% 679F 2.8% 569P DHIA
 4-00 365D 2X 20980M 3.3% 689F 2.7% 566P DHIA
 5-03 305D 2X 20700M 3.2% 670F 2.8% 573P 98
Nominated All-American Five-Year-Old 2022

LAVON FARMS REGAL GAMBLE-ET USA000068041944 A2A2

08/23 USDA PTA -653M -0.04% -37F -0.03% -26P
 +1.9DPR +2.1PL -182NM\$ 10NM%ile -185CM\$ 76% Rel
 2.97SCS -0.30HCR 16% Rel 2.00CCR 47% Rel
 2.40LIV 30% Rel -0.20GL 60% Rel -6.20EFC 31% Rel
 AGA 08/23 PTAT +0.9 +0.9UDC +0.6FLC 73%Rel PTI -37

COULEE CREST AP LILITH USA000078002520 A2A2

Appraisal: 88 @ 3-04 (88/86)
 2-00 320D 2X 21250M 3.5% 750F 3.0% 632P 96
 3-00 275D 2X 18350M 3.0% 558F 2.9% 531P 96
 4-00 359D 2X 28040M 3.3% 912F 2.7% 762P 97
 Dtr: ROCKY HILL COPPER LILIANN 91 @ 6-08 (91/88)
1st Junior Three-Year-Old NC State Fair 2019

3D: COULEE CREST NICK LORILYN USA000068023988 A1A2

Appraisal: 91 @ 5-00 (90/91)
 3-05 365D 3X 42440M*5.3% 2254F*3.1% 1298P* DHIA
 1168D 107900M 5.3% 5707F 3.3% 3533P LIFE

Dam of Legend & Lakoda

Dtrs: COULEE CREST AP LORILANE-ET 90 @ 3-11 (90/86)
 COULEE CREST AP LORILEE 90 @ 4-00 (91/90)
 2-10 365D 3X 41180M*4.7% 1945F*3.5% 1425P* DHIA
 COULEE CREST TOP NOTCH LEXANN-ETV 91 @ 5-11 (92/87)
 4-01 365D 2X 26720M 3.8% 1013F 3.3% 886P DHIA

4D: FLAMBEAU MANOR DECISION LORI-ET USA000068012709 A2A2

Appraisal: 90 @ 8-02 (88/90) Gold Star Dam - 2013
 3-09 365D 3X 44250M*5.9% 2600F*3.0% 1313P* 94
 2328D 184340M 5.4% 10017F 3.3% 6002P LIFE

5D: FLAMBEAU MANOR ENHANCER LANA USA000003043629

Appraisal: 92 @ 7-11 (90/90) Gold Star Dam - 2001
 5-10 365D 2X 30271M 5.4% 1645F 3.2% 968P DHIA
 1980D 130421M 4.9% 6454F 3.3% 4293P LIFE

6D: FLAMBEAU MANOR VOL LAURA USA000003022186

Appraisal: 90 @ 4-07
 4-02 305D 2X 18260M 4.2% 765F 3.7% 680P DHIA

7D: FLAMBEAU MANOR LESLIE USA000002947026

Appraisal: 90 @ 3-08 Gold Star Dam - 1992



Coulee Crest Nick Lorilyn EX-91
 107,900M 5.3% 5,707F 3.3% 3,533P Lifetime
 Dam of Legend & Lakoda
 3rd Dam of Lot 76

Misty Meadows Pilot Sequoia-ETV VG-88

Res. Grand Champion IA State Fair 2022

Dam of Lot 77



Misty Meadows Levi Suede-ET EX-94

Maternal Sister to Dam of Lot 77

LOT 77 5 #1 MICHELANGELO X SEQUIOA IVF EMBRYOS

**Breeder & Owner: HETKE ANDREW, CLIFFE JACK, ENDRES TYLER
REEDSBURG WI**

715-609-0134 andrewhetkephoto@gmail.com

PA: -49M +0.00% -4F +0.04% +2P -17CM\$ -18NM\$
+0.7PTAT +0.6UDC +0.4FLC -0.1DPR -0.1PL +8CPI 3.03SCS

GLADHEART MICHELANGELO-ET 840003206246837 54GU502 A2A2

08/23 USDA GPTA +574M -0.15% -1F -0.03% +14P
-1.4DPR -1.3PL -25NM\$ 25NM%ile -28CM\$ 60% Rel
3.07SCS -0.90HCR 35% Rel -1.70CCR 40% Rel
-1.90LIV 35% Rel -0.70GL 42% Rel 1.40EFC 36% Rel
AGA 08/23 PTAT +0.5 +0.2UDC +0.4FLC 55%Rel PTI +10

MISTY MEADOWS PILOT SEQUIOA-ETV USA000097008540 A2A2

PA: -672M +0.15% -7F +0.07% -11P -6CM\$ -11NM\$
+0.9PTAT +0.9UDC +0.3FLC +1.3DPR +1.2PL +5CPI 2.98SCS
2 App 08/23 PTAT +0.9 +0.9UDR +0.3FLC 41%Rel
Appraisal: VG 88 @ 4-05 (VVVVE)
Reserve Grand Champion Iowa State Fair 2022
1st Jr. Three-Year-Old SW WI Protein Show 2022
8th Four-Year-Old NGS-Madison 2023

3D: MISTY MEADOWS JAYCOB SANDY USA000003066744

Appraisal: 89 @ 5-11 (87/91)
3-07 349D 2X 18390M 4.8% 883F 3.3% 606P 94
2326D 109960M 4.8% 5244F 3.3% 3628P LIFE

4D: MISTY MEADOWS ENHANCER SOUSA USA000003042690

Appraisal: 87 @ 3-07
3-04 326D 2X 18360M 4.1% 747F 3.5% 636P DHIA
Reserve All-American Winter Yearling 1997

5D: LISETER FARM FRANKS SUSSIE USA000003012900

Appraisal: 88 @ 4-07
All-American Fall Calf 1993

- Five (5) #1 IVF embryos
- Sexed semen used for Females
- Resulting calves will be A2A2 by parentage
- Located in Loganville, WI
- Embryos must be in buyer's possession within 60 days of sale

LINDRIAN GRUMPY PILOT-ET CAN000011632409 200GU307 A2A2

08/23 USDA GPTA -413M +0.12% +1F +0.06% -3P
+0.1DPR +1.2PL +84NM\$ 40NM%ile +96CM\$ 88% Rel
2.69SCS -0.60HCR 49% Rel 0.80CCR 67% Rel
1.50LIV 45% Rel 2.50GL 91% Rel -0.40EFC 49% Rel
AGA 08/23 PTAT +0.6 +1.6UDC +0.9FLC 84%Rel PTI +30

MISTY MEADOWS ARCHIE SIS USA000068017104

Appraisal: 92 @ 4-06 (91/92)
2-02 334D 2X 12830M 5.2% 665F 3.6% 457P DHIA
3-03 308D 2X 15180M 5.2% 787F 3.5% 535P 97
4-03 365D 2X 18071M 5.2% 936F 3.7% 663P DHIA
Honorable Mention All-American Winter Calf 2007
Nominated All-American Winter Yearling 2008
Nominated All-American Sr. Three-Year-Old 2010
Dtrs: MISTY MEADOWS LEVI SAPPHIRE-ET 85 @ 3-03 (84/83)
MISTY MEADOWS LEVI SEYBERT-ET 90 @ 4-04 (91/89)
4-00 365D 2X 21650M 5.2% 1119F 3.3% 717P DHIA
MISTY MEADOWS LEVI SIENNA-ET 88 @ 4-04 (88/89)
3-10 365D 2X 21810M 4.5% 973F 3.5% 758P DHIA
Reserve All-American 2013 & 2015
MISTY MEADOWS LEVI SUEDE-ET 94 @ 6-01 (93/93)
2-11 324D 2X 20130M 4.7% 954F 3.3% 663P 94
Unanimous All-American Junior Three-Year-Old 2015
MISTY MEADOWS GRUMPY SWITCH-ET 86 @ 5-03 (86/86)
MISTY MEADOWS PILOT SYCAMORE-ETV 88 @ 4-05 (88/88)
3-01 353D 2X 20270M 4.8% 977F 3.5% 718P 96
MISTY MEADOWS GG HP SCARLET-ETV 91 @ 4-07 (92/90)
3-11 365D 2X 27130M 3.8% 1037F 3.2% 869P DHIA

SEMEN LOTS

S38	GUERNSEY GOLD SIRES SEXED PACKAGE OF 10 UNITS: 2 UNITS 514GU116 COULEE CREST RICHARD CHECKMATE 3 UNITS 514GU120 LANG HAVEN NETWORK KAPTION 1 UNIT 514GU124 SPRINGHILL JUNGLE 4 UNITS 514GU128 DAIRYMAN THEO PELOTON Consigned by Guernsey Gold Sires, Columbus, OH 614.406.8446	A2A2 SEXED A2A2 SEXED A2A2 SEXED A2A2 SEXED Located in Plain City, OH
S39	PACKAGE OF 6 UNITS: 5 UNITS 7GU468 FLAMBEAU MANOR LADYS MAN 1 UNIT OF 576GU900 FLAMBEAU MANOR BOMAN Consigned by Bryce Birk, Big Prairie, OH 574.520.2480	A2A2 A2A2 SEXED Located in Middlebury, IN
S40	PACKAGE OF 11 UNITS: 4 UNITS 7GU452 SNIDERS GRUMPY ASSAULT 7 UNITS 76GU804 SNIDERS LORAL ARCHIE Consigned by Bryce Birk, Big Prairie, OH 574.520.2480	A2A2 Located in Middlebury, IN
S41	5 UNITS OF 694GU959 HI GUERN VIEW LEVI DRONE Consigned by Lars Sivesind, Waukon, IA 563.794.0275	A2A2 SEXED Located in Waukon, IA
S42	3 UNITS OF 694GU959 HI GUERN VIEW LEVI DRONE Consigned by Jesse Dorn, New Glarus, WI 608.214.4838	A2A2 SEXED Located in New Glarus, WI
S43	8 UNITS OF 507GU473 COULEE CREST NOVAK LAMBEAU-ET Consigned by Hoard's Dairyman Farm, Fort Atkinson, WI 920.728.4822	A2A2 SEXED Located in Fort Atkinson, WI
S44	4 UNITS OF 507GU473 COULEE CREST NOVAK LAMBEAU-ET Consigned by Hoard's Dairyman Farm, Fort Atkinson, WI 920.728.4822	A2A2 SEXED Located in Fort Atkinson, WI
S45	3 UNITS OF 507GU473 COULEE CREST NOVAK LAMBEAU-ET Consigned by Lars Sivesind, Waukon, IA 563.794.0275	A2A2 SEXED Located in Waukon, IA
S46	10 UNITS OF 551GU915 COULEE CREST LAVAS HURRICANE-ETV Consigned by Cyndi Nafzger of R-Dream Farm - Mineral Point, WI 608-575-4259	A2A2 SEXED Located in Mineral Point, WI
S47	4 UNITS OF 54GU481 GOLDEN I LONDON Consigned by Idle Neer Sires, Letts, IA 319.572.7070	A2A2 Located in Adel, IA
S48	3 UNITS OF 54GU486 SPRINGHILL ALTITUDE-ET-P Consigned by Idle Neer Sires, Letts, IA 319.572.7070	A2A2 POLLED Located in the GMS Tank, Columbus, OH
S49	7 UNITS OF 54GU486 SPRINGHILL ALTITUDE-ET-P Consigned by Idle Neer Sires, Letts, IA 319.572.7070	A2A2 POLLED Located in Adel, IA
S50	5 UNITS OF 54GU499 IDLE GOLD A HERALD-P Consigned by Neil & Janice Jensen, Comstock, WI 715.554.2833	A2A2 POLLED Located in the GMS Tank, Columbus, OH
S51	7 UNITS OF 54GU463 VALLEVIEW POLLED FUTURE-P Consigned by Idle Neer Sires, Letts, IA 319.572.7070	HOMOZYGOUS POLLED Located in Adel, IA
S52	10 UNITS OF 54GU487 SPRINGHILL JAY Z-TW-P Consigned by Idle Neer Sires, Letts, IA 319.572.7070	A2A2 POLLED Located in Adel, IA
S53	10 UNITS OF 54GU488 SPRINGHILL JETWAY-ET-P Consigned by Idle Neer Sires, Letts, IA 319.572.7070	A2A2 POLLED Located in Adel, IA
S54	10 UNITS OF 54GU489 WHIRLWIND ACRES GARY EXPO Consigned by Idle Neer Sires, Letts, IA 319.572.7070	A2A2 Located in Adel, IA
S55	10 UNITS OF 120GU4081 SPRINGHILL J SNOWSTORM Consigned by Springhill, Big Prairie, OH 330.473.9660	A2A2 +82GPTI Located in the GMS Tank, Columbus, OH
S56	10 UNITS OF 120GU4081 SPRINGHILL J SNOWSTORM Consigned by Springhill, Big Prairie, OH 330.473.9660	A2A2 +82GPTI Located in the GMS Tank, Columbus, OH
S57	2 UNITS OF 14GU208 WAMPANOAG FAYETTE SMOKEY Consigned by Bryce Birk, Big Prairie, OH 574.520.2480	A2A2 Located in Middlebury, IN
S58	2 UNITS OF VILLA CREST OHD ANSWER 68041808 Consigned by Levi Plocher, Salem, OH 330.446.0411	Located in the GMS Tank, Columbus, OH

SEMEN LOTS

S59	3 UNITS OF 31GU618 INDIAN ACRES AMERICAN PIE Consigned by Levi Plocher, Salem, OH 330.446.0411	A2A2 Located in the GMS Tank, Columbus, OH
S60	3 UNITS OF 7GU302 ROZELYN PAT MAR P GOLIATH-ET Consigned by Levi Plocher, Salem, OH 330.446.0411	Located in the GMS Tank, Columbus, OH
S61	2 UNITS OF 14GU318 JENS GOLD AARON COPPER-ET Consigned by Levi Plocher, Salem, OH 330.446.0411	A2A2 Located in the GMS Tank, Columbus, OH
S62	1 UNIT OF 7GU402 EDGEWATER MEADOWS YOGIBEAR-ET Consigned by Knapp Genetics, Epworth, IA 563.590.5369	A2A2 Located in Epworth, IA
S63	5 UNITS OF 54GU468 KNAPPS APIE TOP NOTCH Consigned by Knapp Genetics, Epworth, IA 563.590.5369	Located in Epworth, IA
S64	5 UNITS OF 91GU5743 KNAPPS RIPLEY REGIS TAMPA-ET Consigned by Knapp Genetics, Epworth, IA 563.590.5369	A2A2 Located in Epworth, IA
S65	5 UNITS OF KNAPPS REGIS TY-ET 68039030 Consigned by Knapp Genetics, Epworth, IA 563.590.5369	Located in Epworth, IA
S66	5 UNITS OF 76GU809 KNAPPS ADACKA TITAN-ET Consigned by Knapp Genetics, Epworth, IA 563.590.5369	A2A2 Located in Epworth, IA
S67	5 UNITS OF 1GU415 COULEE CREST LUXURY SPIDER-ET Consigned by Knapp Genetics, Epworth, IA 563.590.5369	Located in Epworth, IA
S68	4 UNITS OF WARWICK MANOR BO AXEL-ET 97001046 Consigned by Knapp Genetics, Epworth, IA 563.590.5369	A2A2 Located in Epworth, IA
S69	6 UNITS OF 7GU405 GOLDEN J RONALD GRUMPY Consigned by Knapp Genetics, Epworth, IA 563.590.5369	A2A2 Located in Epworth, IA
S70	1 UNIT OF 76GU807 SNIDERS GOLDUST ACHIEVE-ET Consigned by Knapp Genetics, Epworth, IA 563.590.5369	A2A2 Located in Epworth, IA
S71	5 UNITS OF 7GU417 SNIDERS TILLER ALTANIC Consigned by Guernsey Marketing Service, Columbus, OH 614.339.5390	A2A2 Located in the GMS Tank, Columbus, OH
S72	5 UNITS OF 21GU247 DUTCH MILL TELESTARS FAYETTE Consigned by Guernsey Marketing Service, Columbus, OH 614.339.5390	Located in the GMS Tank, Columbus, OH
S73	10 UNITS OF 76GU805 SNIDERS DEEMAND ADACKA-ET Consigned by Guernsey Marketing Service, Columbus, OH 614.339.5390	Located in the GMS Tank, Columbus, OH
S74	10 UNITS OF INDIAN ACRES PIES PATRIOT-ET 68029883 Consigned by Guernsey Marketing Service, Columbus, OH 614.339.5390	Located in the GMS Tank, Columbus, OH
S78	2 UNITS OF 514GU114 SPRINGHILL JC PENNEY-ET Consigned by Lars Sivesind, Waukon, IA 563.794.0275	A2A2 SEXED Located in Waukon, IA

Registering Embryo Calves with the American Guernsey Association

New Guernsey Owners

- Visit www.usguernsey.com to learn about membership with the American Guernsey Association. Membership is not required to register calves, but will reduce your registration fees!
- Calf registration can be done online at www.usguernsey.com or using paper forms - contact the office if you desire paper forms.
- It is recommended to contact AGA prior to registration to obtain an owner number.

Requirements of registration

- All donor dams **MUST** be DNA tested. For embryos made after May 2017, donor dams must have been genomic tested. Be sure to ask the consignor about the dam's DNA status before submitting registrations.
- As with any calf registration, you must have the complete registration number and name of both the sire and dam of the calf.
- You must specify who the owner is of each calf registered.
- The prefix of the breeder of the calf is required to start its registered name.
- The AGA does not require any veterinary paperwork to be submitted before registration; although AGA reserves the right to request paperwork if deemed necessary.

Foreign Registration

Each country association has its own rules for embryo registration. Buyers should check with their respective association to see what paperwork and DNA requirements need met. Foreign buyers without a home association could be eligible for AGA registration. Contact the office directly to inquire. AGA will not register calves for buyers with a Guernsey registration association within their country.

