

GOLDEN FUTURE



EMBRYO SALE

Hosted by GMS

September 7, 2024 on [Cowbuyer.com](https://www.cowbuyer.com)

GOLDEN FUTURE EMBRYO SALE

hosted by Guernsey Marketing Service

September 7, 2024 on Cowbuyer.com

Bidding closes 8:00pm EST on September 7.

- All sales are final.
- Payment is due at the end of the sale.
- A 3% convenience fee will be charged for all credit card payments.
- Confirmation of payment will be sent to consignor and purchaser within one week of sale.
- No embryos will ship prior to a full payment being received.
- Buyer is responsible for the coordination, cost, and liability of shipment.
- All embryos are for domestic shipment only unless otherwise specified.
- Final bid must meet the seller's reserve price to be considered sold.
- Check each lot for additional terms.

Sales Staff

Guernsey Marketing Service

Robin Alden 614.339.5390

ralden@usguernsey.com

Payment - Guernsey Marketing Service

Rita Rittgers 614.339.5396

accounting@usguernsey.com

Monday - Thursday, 9:00am - 2:00pm EST

Cowbuyer

Aaron Ray Tompkins 336.363.4639



**View and bid online at
www.cowbuyer.com**

Aaron Ray Tompkins 336.363.4639

Buyers must be pre-registered.

Auction opens the week of Sept. 2 and closes
Sept. 7 with an auto-extend soft close.

Contact Robin Alden if you are unable
to monitor the auction during this time:
614.339.5390 | ralden@usguernsey.com





Japan!

Former #1 CPI Cow
 Gold Star Dam - 2023
 Two milking daughters on the CPI Cow List - August
 Eight young daughters in the top 130 CPI Heifers
 Dam of #3 young sire JUMPSTART & #4 young sire JED
 Dam of JRUE and JETHRO at Guernsey Gold Sires

Dairyman Profit 3825 Japan EX-90 GSD

4-03 365D 3X 23,870M 5.5% 1,315F 3.6% 868P
 Dam of Lots 1 & 2

LOT 1 3 #1 OTHELLO X JAPAN IVF EMBRYOS

Breeder & Owner: HOARDS DAIRYMAN FARM
FORT ATKINSON WI
920.728.4822 hdfarm@hoards.com

- Three (3) #1 IVF embryos
- Reverse sorted semen used for Females
- Resulting calves will be A2A2 by parentage
- Resulting calves would rank #4 on the CPI Heifer List - August!
- Located at Sunshine Genetics, WI
- Embryos must be in buyer's possession within 60 days of sale

PA: +426M +0.08% +33F +0.03% +20P +549CM\$ +541NM\$
 +1.0PTAT +1.2UDC +1.2FLC +2.8DPR +6.4PL +124CPI 2.80SCS

DAIRYMAN AUDREY OTHELLO-ET 840003240506930 551GU918 A2A2

08/24 USDA GPTA +606M +0.07% +40F +0.02% +25P
 +2.4DPR +6.1PL +599NM\$ 99NM%ile +604CM\$ 52% Rel
 2.95SCS 1.10HCR 27% Rel 3.00CCR 30% Rel
 2.40LIV 27% Rel -0.40GL 31% Rel -3.00EFC 28% Rel
 AGA 08/24 PTAT +0.7 +0.7UDC +1.2FLC 52%Rel PTI +127

DAIRYMAN LOGO PROFIT 840003009973877 49GU229 A2A2

08/24 USDA GPTA +422M -0.01% +17F +0.00% +14P
 +1.9DPR +2.9PL +269NM\$ 76NM%ile +275CM\$ 90% Rel
 2.75SCS 0.80HCR 46% Rel 2.90CCR 65% Rel
 1.40LIV 43% Rel 0.90GL 93% Rel -5.10EFC 47% Rel
 AGA 08/24 PTAT +0.2 +0.7UDC +0.7FLC 85%Rel PTI +75

DAIRYMAN PROFIT 3825 JAPAN 840003143321971 A2A2

08/24 USDA GPTA +246M +0.08% +25F +0.04% +15P
 +3.1DPR +6.7PL +482NM\$ 98NM%ile +493CM\$ 70% Rel
 2.65SCS 1.40HCR 30% Rel 3.80CCR 36% Rel
 3.60LIV 29% Rel -0.10GL 42% Rel -0.20EFC 31% Rel
 3 Rec YDev: +496M +61F +33P
 6 App 08/24 PTAT +1.2 +1.6UDR +1.2FLC 75%Rel CPI +121
 Appraisal: EX 90 @ 5-06 (EEVEE) Gold Star Dam - 2023
 1-10 283D 3X 15320M 5.0% 771F 3.8% 582P 101
 2-10 365D 3X 22170M 5.8% 1295F 3.8% 840P DHIA
 4-03 365D 3X 23870M 5.5% 1315F 3.6% 868P DHIA
 Dtrs: DAIRYMAN PHANTASTIC 4604 JANA 84 @ 4-06 (79/85)
 1-11 365D 3X 24880M 3.2% 802F 3.0% 736P DHIA
 #140(T) CPI Cow August 2024
 DAIRYMAN PHARMER 4952 JANE-ETV 84 @ 3-03 (85/81)
 DAIRYMAN THEO 5024 JARI-ETV 86 @ 2-11 (87/84)
 #25(T) CPI Cow August 2024
 DAIRYMAN PHONZE 5288 JAMMY-ET
 Reserve Junior Champion Illinois State Fair 2024
 #29(T) CPI Heifer August 2024

DAIRYMAN V I P 2512 JAZZER 840003124608098 A2A2

Appraisal: + 81 @ 5-10 (V+VF+) Gold Star Dam - 2018
 1-08 290D 3X 16890M 5.2% 877F 3.9% 667P 93
 2-07 295D 3X 22770M 5.0% 1131F 3.8% 869P 94
 3-07 365D 3X 28060M 5.4% 1523F 3.9% 1101P DHIA
 5-02 318D 2X 18170M 5.7% 1032F 4.0% 718P DHIA
 6-03 328D 3X 23470M 6.2% 1463F 3.8% 893P 104
 1602D 109570M 5.5% 6041F 3.9% 4257P LIFE
 Dtrs: DAIRYMAN COPPER 3443 JIGGLES 90 @ 6-05 (91/90)
 Gold Star Dam - 2022
 5-10 339D 3X 20810M 5.6% 1165F 3.8% 783P 104
 #33(T) CPI Cow August 2024
 DAIRYMAN CRAIG 4822 JAZZY 82 @ 3-02 (83/77)
 2-11 284D 3X 17230M 6.2% 1060F 3.8% 663P 104
 #140(T) CPI Cow August 2024

3D: DAIRYMAN ALSTAR JAZLYN USA000070781141

Appraisal: 85 @ 3-01 (85/85)
 1-08 365D 3X 22260M 4.8% 1058F 3.6% 811P DHIA

4D: GR-DAIRYMAN BINGO JAZZ USA000064739061

Appraisal: 83 @ 3-04 (82/87)
 2-00 315D 3X 19840M 5.2% 1036F 3.8% 759P 93

5D: PR-STOCKWELL FARM JANE USA000068004670

Appraisal: 84 @ 5-00 (80/88)
 7-00 304D 3X 27760M 4.6% 1270F 3.5% 975P DHIA



Dairyman Copper 3443 Jiggles EX-90 GSD
 5-10 339D 3X 20,810M 5.6% 1,165F 3.8% 783P
 #33(T) CPI Cow August 2024
 Maternal Sister to Dam of Lots 1 & 2



Dairyman Phonze 5288 Jammy-ET
 #29(T) CPI Heifer August 2024
 Reserve Junior Champion Illinois State Fair 2024
 Maternal Sister to Lots 1 & 2

LOT 2 2 #1 OLAF X JAPAN IVF EMBRYOS

Breeder & Owner: HOARDS DAIRYMAN FARM
FORT ATKINSON WI
920.728.4822 hdfarm@hoards.com

PA: +574M +0.04% +34F +0.03% +25P +541CM\$ +531NM\$
 +0.9PTAT +1.5UDC +1.1FLC +1.8DPR +5.4PL +124CPI 2.70SCS

- Two (2) #1 IVF embryos
- Reverse sorted semen used for Females
- Resulting calves would rank #4 on the CPI Heifer List - August!
- Located at Sunshine Genetics, WI
- Embryos must be in buyer's possession within 60 days of sale

DAIRYMAN CHECKMATE OLAF 840003240506902 49GU242 A1A2

08/24 USDA GPTA +902M +0.00% +42F +0.02% +35P
 +0.4DPR +4.0PL +579NM\$ 99NM%ile +588CM\$ 54% Rel
 2.74SCS 1.10HCR 29% Rel 0.50CCR 30% Rel
 0.40LIV 29% Rel -0.50GL 31% Rel 4.40EFC 28% Rel
 AGA 08/24 PTAT +0.5 +1.3UDC +1.0FLC 52%Rel PTI +126

DAIRYMAN PROFIT 3825 JAPAN 840003143321971 A2A2

08/24 USDA GPTA +246M +0.08% +25F +0.04% +15P
 +3.1DPR +6.7PL +482NM\$ 98NM%ile +493CM\$ 70% Rel
 2.65SCS 1.40HCR 30% Rel 3.80CCR 36% Rel
 3.60LIV 29% Rel -0.10GL 42% Rel -0.20EFC 31% Rel
 3 Rec YDev: +496M +61F +33P
 6 App 08/24 PTAT +1.2 +1.6UDR +1.2FLC 75%Rel CPI +121
 Appraisal: EX 90 @ 5-06 (EEVEE) Gold Star Dam - 2023
 1-10 283D 3X 15320M 5.0% 771F 3.8% 582P 101
 2-10 365D 3X 22170M 5.8% 1295F 3.8% 840P DHIA
 4-03 365D 3X 23870M 5.5% 1315F 3.6% 868P DHIA
 Dtrs: DAIRYMAN PHANTASTIC 4604 JANA 84 @ 4-06 (79/85)
 1-11 365D 3X 24880M 3.2% 802F 3.0% 736P DHIA
 #140(T) CPI Cow August 2024
 DAIRYMAN PHARMER 4952 JANE-ETV 84 @ 3-03 (85/81)
 DAIRYMAN THEO 5024 JARI-ETV 86 @ 2-11 (87/84)
 #25(T) CPI Cow August 2024
 DAIRYMAN PHONZE 5288 JAMMY-ET
 Reserve Junior Champion Illinois State Fair 2024
 #29(T) CPI Heifer August 2024

DAIRYMAN LOGO PROFIT 840003009973877 49GU229 A2A2

08/24 USDA GPTA +422M -0.01% +17F +0.00% +14P
 +1.9DPR +2.9PL +269NM\$ 76NM%ile +275CM\$ 90% Rel
 2.75SCS 0.80HCR 46% Rel 2.90CCR 65% Rel
 1.40LIV 43% Rel 0.90GL 93% Rel -5.10EFC 47% Rel
 AGA 08/24 PTAT +0.2 +0.7UDC +0.7FLC 85%Rel PTI +75

DAIRYMAN V I P 2512 JAZZER 840003124608098 A2A2

Appraisal: + 81 @ 5-10 (V+VF+) Gold Star Dam - 2018
 1-08 290D 3X 16890M 5.2% 877F 3.9% 667P 93
 2-07 295D 3X 22770M 5.0% 1131F 3.8% 869P 94
 3-07 365D 3X 28060M 5.4% 1523F 3.9% 1101P DHIA
 5-02 318D 2X 18170M 5.7% 1032F 4.0% 718P DHIA
 6-03 328D 3X 23470M 6.2% 1463F 3.8% 893P 104
 1602D 109570M 5.5% 6041F 3.9% 4257P LIFE
 Dtrs: DAIRYMAN COPPER 3443 JIGGLES 90 @ 6-05 (91/90)
 Gold Star Dam - 2022
 5-10 339D 3X 20810M 5.6% 1165F 3.8% 783P 104
 #33(T) CPI Cow August 2024
 DAIRYMAN CRAIG 4822 JAZZY 82 @ 3-02 (83/77)
 2-11 284D 3X 17230M 6.2% 1060F 3.8% 663P 104
 #140(T) CPI Cow August 2024

3D: DAIRYMAN ALSTAR JAZLYN USA000070781141

Appraisal: 85 @ 3-01 (85/85)
 1-08 365D 3X 22260M 4.8% 1058F 3.6% 811P DHIA

4D: GR-DAIRYMAN BINGO JAZZ USA000064739061

Appraisal: 83 @ 3-04 (82/87)
 2-00 315D 3X 19840M 5.2% 1036F 3.8% 759P 93

5D: PR-STOCKWELL FARM JANE USA000068004670

Appraisal: 84 @ 5-00 (80/88)
 7-00 304D 3X 27760M 4.6% 1270F 3.5% 975P DHIA



Mar Ral Maestro Milly EX-94-3E
 137,970 5.1% 6,989F 3.3% 4,605P Lifetime
 Dam of Lot 3; Mat. Family of Lot 4

Milly!

Reserve All-American Five-Year-Old 2018
 Nominated All-American Four-Year-Old 2017
 Nominated All-American Aged Cow 2019
 Member, Nom. All-American Best 3 Females 2017
 Reserve Grand Champion Ohio State Fair 2017
 1st Aged Cow NGS-Louisville 2019

LOT 3 3 #1 DJ X MILLY IVF EMBRYOS

Breeder & Owner: PLOCHER L & C + WEAVER V & G
SALEM OH
330.446.0411 leviplocher20@gmail.com

- Three (3) #1 IVF embryos
- Sexed semen used for Females
- Resulting calves will be A2A2 by parentage
- Located at TransOva, Maryland
- Embryos must be in buyer's possession within 60 days of sale

PA: -433M -0.01% -21F -0.01% -16P -153CM\$ -154NM\$
 +0.7PTAT +1.3UDC +1.9FLC -0.8DPR +1.2PL -13CPI 2.87SCS

HI GUERN VIEW DIVAS JCPENNEY DJ USA000097011491 6GU123 A2A2

08/24 USDA GPTA -162M +0.01% -6F +0.02% -2P
 -2.5DPR +1.5PL -71NM\$ 7NM%ile -70CM\$ 60% Rel
 3.00SCS -2.70HCR 33% Rel -3.70CCR 38% Rel
 0.30LIV 31% Rel -0.20GL 45% Rel -4.70EFC 33% Rel
 AGA 08/24 PTAT +0.7 +1.1UDC +1.3FLC 60%Rel PTI +4

VILLA CREST MAR RAL PIE MAESTRO USA000068043325

AGA 08/24 PTAT -0.5 +0.1UDC +1.2FLC 50%Rel

MAR RAL MAESTRO MILLY USA000068038591 A2A2

08/24 USDA GPTA -703M -0.02% -35F -0.03% -29P
 +1.0DPR +0.8PL -237NM\$ 1NM%ile -236CM\$ 68% Rel
 2.74SCS -1.30HCR 25% Rel 0.40CCR 37% Rel
 -0.60LIV 31% Rel 0.70GL 30% Rel -4.60EFC 30% Rel
 5 Rec YDev: -1299M -49F -47P
 4 App 08/24 PTAT +0.6 +1.4UDR +2.4FLC 65%Rel CPI -30
 Appraisal: EX 94 @ 9-00 (EEEE) 3E
 2-01 315D 2X 15350M 5.0% 762F 3.4% 523P 96
 3-00 362D 2X 22190M 5.4% 1196F 3.5% 769P 98
 4-01 322D 2X 22630M 5.2% 1170F 3.4% 759P 97
 5-02 365D 2X 27270M 5.5% 1497F 3.4% 922P DHIA
 6-03 365D 2X 24490M 4.8% 1178F 3.2% 790P DHIA
 7-07 319D 2X 22620M 4.6% 1035F 3.2% 724P 97
 2137D 137970M 5.1% 6989F 3.3% 4605P LIFE
 Dtrs: MAR RAL MAGIC MADGE 88 @ 3-06 (87/88)
 2-06 365D 2X 21810M 4.5% 992F 3.0% 647P DHIA
 MAR RAL MENTOR MUSETTE 87 @ 2-06 (86/88)
 2-00 365D 2X 19000M 4.1% 782F 3.3% 629P DHIA
 1st Jr. Two-Year-Old Ohio State Fair 2018
 MAR RAL SHAGGY MAVIS 91 @ 5-08 (92/86)
 3-08 337D 2X 21350M 5.2% 1103F 3.4% 721P 97
 MAR RAL MONITOR MACY 81 @ 3-03 (83/81)
 2-06 365D 2X 21890M 5.7% 1249F 3.4% 736P DHIA

MAR RAL ANDY MARCY USA000068041543

Appraisal: 90 @ 4-03 (88/85)
 2-06 365D 2X 19370M 4.6% 899F 3.2% 629P DHIA
 3-11 365D 2X 24310M 4.4% 1067F 3.3% 797P DHIA

3D: MAR RAL REWARD MARQUITA USA000068022978

Appraisal: 87 @ 4-08 (86/88)
 4-04 365D 2X 25070M 4.7% 1178F 3.3% 821P DHIA

4D: MAR RAL TILLER MORGAN USA000068010779

Appraisal: 92 @ 3-11 (91/89)
 3-08 365D 2X 24880M 4.4% 1090F 3.1% 776P DHIA
 All-American Jr. Two-Year-Old 2008

5D: MAR RAL ROYAL MARTHA-ET USA000003071988

Appraisal: 94 @ 6-10 (93/93)
 4-00 361D 2X 27910M 4.1% 1148F 3.3% 927P 93
 2484D 156430M 4.3% 6653F 3.5% 5453P LIFE

All-American Five-Year-Old 2006
 Reserve All-American Four-Year-Old 2005
 Honorable Mention All-American Sr. Three-Year-Old 2004
 Honorable Mention All-American Aged Cow 2007

Dtr: MAR RAL TILLER MARTHA-ET 93 @ 4-09 (92/92)
 3-02 365D 2X 24150M 4.2% 1025F 3.1% 752P DHIA
 Nominated All-American Aged Cow 2017

6D: RAEMELTON PRIME MAJESTIC USA000002982131

Appraisal: 94 @ 10-05
 7-09 365D 2X 26670M 3.8% 1010F 3.4% 920P DHIA
 2545D 144830M 4.4% 6416F 3.6% 5173P LIFE

7D: RAEMELTON H W MARGO USA000002729497

Appraisal: 91 @ 7-05
 3875D 167870M 4.6% 7755F 2.6% 4325P LIFE

8D: RAEMELTON STYLISH MAGIC USA000002601586

Appraisal: 91 @ 10-01

9D: RAEMELTON DUKES MAGIC USA000002371835

Appraisal: 90 @ 6-09



Ivy!

Nominated All-American Sr. Three-Year-Old 2021
 Reserve Grand Champion Ohio State Fair 2021
 1st Sr. Three-Year-Old NGS-Louisville 2021
 Dam of INDIANA JONES at Masterpiece Genetics
 Eighth generation Excellent

Mar Ral Martha Ian Ivy-ET EX-91

2-05 360D 2X 19,250M 5.0% 956F 3.4% 652P
 Dam of Lot 4; Mat. Family of Lot 3

LOT 4 2 #1 DEREK X IVY IVF EMBRYOS

Breeder & Owner: PLOCHER L & C + WEAVER V & G
SALEM OH
330.446.0411 leviplocher20@gmail.com

- Two (2) #1 IVF embryos
- Sexed semen used for Females
- Resulting calves will be A2A2 by parentage
- Resulting calves will be potential 9th generation Excellents!
- Located at TransOva, Maryland
- Embryos must be in buyer's possession within 60 days of sale

PA: -752M +0.10% -18F +0.01% -24P -165CM\$ -162NM\$
 +0.5PTAT +1.0UDC +0.6FLC +1.5DPR +0.0PL -26CPI 3.11SCS

DIX-LEE NATE DEREK 840003149154016 54GU504 A2A2

08/24 USDA PTA -661M +0.18% +0F +0.03% -18P
 +3.3DPR +2.6PL +98NM\$ 30NM%ile +100CM\$ 53% Rel
 2.94SCS 0.70HCR 16% Rel 3.30CCR 24% Rel
 1.10LIV 20% Rel -0.50GL 36% Rel 3.90EFC 18% Rel
 AGA 08/24 PTAT +0.0 +0.8UDC +0.2FLC 46%Rel PTI +15

VILLA CREST LEA IAN USA000000602391

08/24 USDA PTA -1035M +0.25% -7F +0.06% -26P
 +1.9DPR -4.0PL -214NM\$ 0NM%ile -210CM\$ 84% Rel
 2.93SCS 2.30HCR 14% Rel 2.70CCR 52% Rel
 2.10LIV 39% Rel -1.50GL 45% Rel -4.70EFC 37% Rel
 AGA 08/24 PTAT +0.0 +1.1UDC -0.8FLC 84%Rel PTI -34

MAR RAL MARTHA IAN IVY-ET 840003147224044 A2A2

08/24 USDA GPTA -842M +0.02% -36F -0.01% -30P
 -0.4DPR -2.6PL -422NM\$ 0NM%ile -430CM\$ 63% Rel
 3.28SCS-1.80HCR 27% Rel -0.50CCR 37% Rel
 -0.90LIV 34% Rel -0.40GL 35% Rel -2.90EFC 33% Rel
 3 Rec YDev: -2047M -87F -49P
 3 App 08/24 PTAT +1.0 +1.1UDR +1.0FLC 68%Rel CPI -66
 Appraisal: EX 91 @ 5-00 (EEEEEE)
 2-05 360D 2X 19250M 5.0% 956F 3.4% 652P 95
 3-06 315D 2X 18230M 5.5% 997F 3.4% 618P 88
 4-07 304D 2X 18090M 4.8% 867F 3.4% 621P 94

MAR RAL TILLER MARTHA-ET USA000068044926

Appraisal: 93 @ 4-09 (92/92)
 2-01 365D 2X 20220M 4.7% 954F 3.5% 710P DHIA
 3-02 365D 2X 24150M 4.2% 1025F 3.1% 752P DHIA
 4-05 365D 2X 23140M 4.1% 959F 3.2% 748P DHIA
 6-04 365D 2X 22530M 4.9% 1114F 3.2% 713P DHIA
 1931D 105360M 4.5% 4693F 3.3% 3439P LIFE
 Nominated All-American Aged Cow 2017
 Member, Nominated All-American Best Three Females 2017
 Dtr: MAR RAL MARTHA IAN IRENE-ET 89 @ 5-00 (90/83)

3D: MAR RAL ROYAL MARTHA-ET USA000003071988

Appraisal: 94 @ 6-10 (93/93)
 4-00 361D 2X 27910M 4.1% 1148F 3.3% 927P 93
 2484D 156430M 4.3% 6653F 3.5% 5453P LIFE
 All-American Five-Year-Old 2006
 Reserve All-American Four-Year-Old 2005
 Honorable Mention All-American Sr. Three-Year-Old 2004
 Honorable Mention All-American Aged Cow 2007



Mar Ral Royal Martha-ET EX-94

156,430M 4.3% 6,653F 3.5% 5,453P Lifetime
 All-American Five-Year-Old 2006
 3rd Dam of Lot 4; 5th Dam of Lot 3



Up The Creek Morey Andie EX-93-4E

174,520M 5.1% 8,966F 3.5% 6,080P Lifetime
Dam of Lot 5

Up The Creek Copper Avacado EX-91

5-11 298D 2X 20,420M 5.0% 1,022F 3.0% 621P
Maternal Sister to Lot 5

LOT 5 3 #1 AVENGER X ANDIE IVF EMBRYOS

**Breeder & Owner: ANDERSON DAVID L
LESTER PRAIRIE MN
320.395.2023 upthecreekguernseys@gmail.com**

- Three (3) #1 IVF embryos
- Reverse sorted semen used for Females
- Resulting calves will be A2A2 by parentage
- Located in Lester Prairie, MN
- Embryos must be in buyer's possession within 60 days of sale

PA: -147M +0.08% +7F -0.01% -7P +157CM\$ +155NM\$
+1.2PTAT +1.5UDC +1.8FLC +1.2DPR +3.2PL +47CPI 2.85SCS

SPRINGHILL AVENGER 840003265818565 120GU4389 A2A2

08/24 USDA GPTA -94M +0.03% +1F -0.02% -7P
-0.3DPR -0.4PL -76NM\$ 7NM%ile -77CM\$ 56% Rel
2.93SCS -1.20HCR 28% Rel -0.40CCR 34% Rel
-1.40LIV 29% Rel -0.10GL 40% Rel -1.10EFC 30% Rel
AGA 08/24 PTAT +1.7 +2.2UDC +3.3FLC 56%Rel PTI +43

UP THE CREEK MOREY ANDIE USA000068042722 A2A2

08/24 USDA GPTA -200M +0.12% +12F +0.00% -6P
+2.6DPR +6.7PL +386NM\$ 95NM%ile +391CM\$ 69% Rel
2.77SCS -0.40HCR 32% Rel 2.60CCR 44% Rel
2.70LIV 37% Rel -0.60GL 41% Rel -5.60EFC 32% Rel
5 Rec YDev: -656M +18F -13P
3 App 08/24 PTAT +0.3 +0.8UDR +0.2FLC 71%Rel CPI +50

Appraisal: EX 93 @ 12-03 (EEEEVE) 4E
2-03 307D 2X 13610M 4.9% 662F 3.4% 460P 97
3-02 310D 2X 18480M 5.2% 970F 3.5% 640P 98
4-02 303D 2X 18280M 5.4% 978F 3.5% 634P 98
5-01 304D 2X 18720M 5.1% 949F 3.6% 668P 96
6-00 365D 3X 20970M 5.1% 1068F 3.7% 768P DHIA
7-02 296D 2X 15340M 4.8% 740F 3.5% 530P 96
8-02 365D 2X 16190M 5.1% 820F 3.3% 542P DHIA
9-08 323D 2X 15870M 5.2% 820F 3.4% 535P 98
10-08 316D 2X 15670M 5.1% 803F 3.5% 541P 97
11-09 365D 2X 17190M 5.3% 910F 3.4% 592P DHIA
3402D 174520M 5.1% 8966F 3.5% 6080P LIFE

Dam of AUDREY at Guernsey Gold Sires

Dtrs: UP THE CREEK LOGO APPETITE 86 @ 4-08 (88/87)
3-00 319D 2X 19180M 4.5% 867F 3.2% 623P 97
UP THE CREEK LATIMER ANTIQUE 81 @ 2-01 (83/83)
UP THE CREEK PRADA ANALEE 86 @ 6-00 (87/83)
2-00 365D 2X 16030M 4.2% 681F 3.3% 536P DHIA
UP THE CREEK COPPER AVACADO 91 @ 6-03 (93/88)
5-11 298D 2X 20420M 5.0% 1022F 3.0% 621P 97

ADAMS CREEK REGAL MOREY-ET USA000068020971 200GU117 A2A2

08/24 USDA GPTA -695M +0.11% -14F +0.03% -18P
-0.2DPR +4.0PL -1NM\$ 15NM%ile +5CM\$ 85% Rel
2.80SCS -0.50HCR 38% Rel -0.70CCR 63% Rel
4.90LIV 46% Rel 0.00GL 87% Rel -9.00EFC 45% Rel
AGA 08/24 PTAT +0.5 +0.8UDC -0.2FLC 82%Rel PTI -15

UP THE CREEK CHALLENGES ADVENT USA000068019457

Appraisal: 90 @ 4-01 (90/91)
1-11 329D 2X 13610M 5.3% 717F 3.5% 482P 97
3-00 305D 2X 13940M 5.2% 727F 3.7% 513P 98
3-11 294D 2X 15410M 5.1% 792F 3.5% 542P 97
Dtr: UP THE CREEK SCOOBIE ANNIKA 88 @ 2-11 (90/84)
2-05 349D 2X 19540M 5.3% 1032F 3.6% 709P 97

3D: UP THE CREEK DOUBLE L ATLANTA USA000068000477

Appraisal: 88 @ 4-04 (87/87)
4-00 306D 2X 20530M 4.4% 900F 3.3% 685P 98

4D: UP THE CREEK LOGICS ASPEN USA000003072626

5D: UP THE CREEK MAGICS ANDREA USA000003060904

Appraisal: 90 @ 3-11 (91/85)
3-02 327D 2X 16840M 4.5% 750F 3.5% 585P 99

6D: UP THE CREEK LORALS ALIAS USA000003050252

Appraisal: 87 @ 4-05
4-00 294D 2X 16090M 4.3% 691F 3.3% 526P DHIA



Rocky Hill Prada Holiday EX-94-3E
 137,100M 4.4% 6,018F 3.2% 4,376P Lifetime
 HM All-American Lifetime Production Cow 2021
 Dam of Lot 6



Rocky Hill Novak Hooray VG-86
 Nominated All-American Summer Yearling 2022
 Dam of the JC @ 2024 Guernsey Gold Showcase!
 Maternal Sister to Lot 6

LOT 6 3 #1 CADET X HOLIDAY IVF EMBRYOS

Breeder & Owner: MCCARTY ELIJAH AND HENRY
HUGHESVILLE PA
813.523.1168 rockyhill91@yahoo.com

- Three (3) #1 IVF embryos
- Sexed semen used for Females
- Located at TransOva, Maryland
- Embryos must be in buyer's possession within 60 days of sale

PA: +3M +0.01% +0F -0.04% -6P -71CM\$ -68NM\$
 +0.9PTAT +1.0UDC +2.1FLC -0.8DPR +0.5PL +19CPI 2.99SCS

HARTDALE JCP CADET 840003237975540 6GU133 A2A2

08/24 USDA GPTA +533M -0.11% +4F -0.06% +7P
 -0.6DPR +0.6PL +32NM\$ 23NM%ile +27CM\$ 58% Rel
 3.00SCS -1.80HCR 29% Rel -1.40CCR 32% Rel
 1.00LIV 28% Rel 0.20GL 39% Rel -2.90EFC 29% Rel
 AGA 08/24 PTAT +0.6 +1.0UDC +1.0FLC 56%Rel PTI +34

INDIAN ACRES PRADA-ET USA000068026022 200GU305 A1A2

08/24 USDA GPTA -80M -0.08% -18F -0.02% -7P
 -2.1DPR +2.0PL -67NM\$ 7NM%ile -67CM\$ 95% Rel
 2.87SCS -0.60HCR 63% Rel -3.80CCR 85% Rel
 -1.10LIV 68% Rel 1.90GL 97% Rel -0.30EFC 70% Rel
 AGA 08/24 PTAT +0.6 +1.0UDC +3.4FLC 95%Rel PTI +7

ROCKY HILL PRADA HOLIDAY USA000078000986 A1A2

08/24 USDA GPTA -528M +0.12% -4F -0.01% -19P
 -1.0DPR +0.3PL -167NM\$ 5NM%ile -168CM\$ 69% Rel
 2.98SCS-1.80HCR 33% Rel -2.50CCR 43% Rel
 -0.90LIV 34% Rel 1.80GL 43% Rel -1.90EFC 35% Rel
 5 Rec YDev: -1259M -11F -47P
 4 App 08/24 PTAT +1.2 +0.9UDR +3.1FLC 71%Rel CPI +4
 Appraisal: EX 94 @ 9-08 (EEVEE) 3E

ROCKY HILL DYNAMIC HAVEN USA000068045820

Appraisal: 90 @ 5-10 (88/90)
 2-03 303D 2X 13330M 4.5% 601F 3.4% 448P 94
 3-03 365D 2X 18650M 4.7% 879F 3.5% 662P DHIA
 4-07 301D 2X 20180M 4.5% 917F 3.4% 694P 97
 5-07 362D 2X 17920M 4.5% 804F 3.6% 649P 98
 5th Fall Calf NGS-Harrisburg 2012
 1st Sr. Three-Year-Old New York Spring Show 2015
 Dtr: ROCKY HILL PILOT HOLLISTER 87 @ 5-00 (87/82)
 4-10 365D 2X 23230M 4.6% 1066F 3.3% 771P DHIA

2-02 313D 2X 15320M 4.3% 664F 3.3% 510P 96
 3-02 287D 2X 15930M 4.4% 700F 3.3% 523P 97
 4-02 278D 2X 18220M 4.0% 729F 3.2% 582P 95
 5-02 297D 2X 20570M 4.2% 855F 3.2% 657P 95
 6-02 325D 2X 19330M 4.1% 795F 3.1% 602P 96
 7-05 365D 2X 21040M 4.7% 990F 3.1% 657P DHIA
 9-02 305D 2X 22890M 4.7% 1086F 3.1% 708P 96
 2295D 137100M 4.4% 6018F 3.2% 4376P LIFE
 Honorable Mention All-American Lifetime Production Cow 2021
 Dtrs: ROCKY HILL PISTOLL HARMONY 84 @ 3-02 (82/81)
 2-05 365D 2X 16020M 4.8% 776F 3.5% 555P DHIA
 ROCKY HILL KOJACK HIT ON ME-ETV 83 @ 2-10 (81/80)
 Nominated Junior All-American Spring Yearling 2022
 #36(T) PTAT Cow August 2024
 ROCKY HILL NOVAK HOORAY 86 @ 2-09 (85/85)
 Nominated All-American Summer Yearling 2022
 ROCKY HILL JAVA HO HO HO-ETV
 Nominated Junior All-American Winter Calf 2023

3D: ROCKY HILL MISSION HARLEY USA000068021593

Appraisal: 88 @ 4-09 (87/90)
4D: NEBZ NOLL HOPE HOLLY-TW USA000068010288
 Appraisal: 86 @ 4-01 (84/90)
 3-02 355D 2X 19190M 4.3% 816F 3.3% 625P DHIA
 Reserve Junior All-American Winter Calf 2006
 Reserve Junior All-American Winter Yearling 2007



Fiesta!

- Unanimous All-American Four-Year-Old 2015
- Unanimous All-American Senior Two-Year-Old 2013
- All-American Fall Yearling 2012
- Jr. All-American & Reserve All-American Fall Calf 2011
- Honorable Mention All-American Sr. 3-Year-Old 2014
- Nominated All-American Five-Year-Old 2016
- Member, Unanimous All-American Dam & Daughter '15
- Grand Champion NGS-Harrisburg 2014
- Res. Grand Champion NGS-Madison & Harrisburg '13
- Res. Grand Champion NGS-Madison & Harrisburg '15
- Reserve Jr. Champion NGS- & NJS-Louisville 2011
- Grand Champion NY Spring Show 2015
- Grand Champion NY State Fair 2014
- Junior Champion WI State Show 2012

Millborne Hillpoint S Fiesta-ET EX-93

3-07 365D 2X 21,830M 4.6% 1,010F 3.7% 801P
 Dam of Lot 7

LOT 7 3 #1 WIPEOUT X FIESTA IVF EMBRYOS

**Breeder & Owner: SPRINGHILL
 BIG PRAIRIE OH
 330.473.9660**

springhill.chris@gmail.com

- Three (3) #1 IVF embryos
- Reverse sorted semen used for Females
- Located at TransOva, Maryland
- Embryos must be in buyer's possession within 60 days of sale

PA: +35M +0.00% +2F +0.06% +11P -30CM\$ -30NM\$
 +1.2PTAT +1.2UDC +2.6FLC -1.4DPR -0.2PL +43CPI 3.25SCS

UP THE CREEK AUDREYS WIPEOUT USA000097014511 6GU137 A2A2

08/24 USDA GPTA +221M -0.05% +2F +0.01% +10P
 +0.7DPR +3.4PL +200NM\$ 61NM%ile +204CM\$ 52% Rel
 2.90SCS -0.40HCR 27% Rel 0.10CCR 30% Rel
 0.30LIV 27% Rel 0.10GL 31% Rel -4.60EFC 27% Rel
 AGA 08/24 PTAT +1.3 +1.8UDC +3.4FLC 51%Rel PTI +82

COULEE CREST LUXURY SPIDER-ET USA00000604229 1GU415

08/24 USDA GPTA +341M +0.08% +30F +0.09% +28P
 -2.9DPR -3.1PL -23NM\$ 15NM%ile -19CM\$ 97% Rel
 3.32SCS -0.60HCR 72% Rel -3.00CCR 91% Rel
 -3.50LIV 76% Rel -0.30GL 98% Rel 8.00EFC 80% Rel
 AGA 08/24 PTAT +0.4 +0.0UDC -1.3FLC 97%Rel PTI +23

MILLBORNE HILLPOINT S FIESTA-ET USA000068041840

08/24 USDA GPTA -151M +0.05% +2F +0.10% +12P
 -3.5DPR -3.7PL -260NM\$ 1NM%ile -263CM\$ 79% Rel
 3.60SCS -2.30HCR 39% Rel -4.50CCR 53% Rel
 -3.40LIV 41% Rel 0.00GL 56% Rel -0.20EFC 41% Rel
 3 Rec YDev: -1147M -28F +5P
 5 App 08/24 PTAT +1.0 +0.6UDR +1.7FLC 77%Rel CPI +3
 Appraisal: 93 @ 6-01 (92/93)
 2-04 365D 2X 18430M 5.0% 920F 3.6% 662P DHIA
 3-07 365D 2X 21830M 4.6% 1010F 3.7% 801P DHIA
 5-08 314D 2X 11670M 4.8% 558F 4.0% 469P 97
 Dtrs: MILLBORNE HILLPOINT S FLARE 85 @ 5-06 (81/87)
 3-06 365D 2X 22450M 3.8% 863F 3.4% 769P DHIA
 MILLBORNE HILLPOINT JAC FIZZ-ET 87 @ 3-02 (87/86)
 2-06 365D 2X 22660M 3.4% 775F 3.2% 725P DHIA
Reserve All-American Spring Calf 2014
 MILLBORNE HP ALYMO FINALLY-ETV 91 @ 5-03 (95/82)
 2-01 365D 2X 18765M 5.2% 977F 3.6% 681P DHIA
Reserve All-American Junior Two-Year-Old 2018
 MILLBORNE HP DRONE FAITH-ETV 85 @ 4-07 (80/83)
 2-05 305D 2X 23730M 5.9% 1409F 3.4% 814P 97
Nominated All-American Fall Yearling 2021
 MILLBORNE HP DRONE FELICITY-ETV 90 @ 4-05 (90/92)
 2-03 365D 2X 16320M 4.3% 701F 3.4% 557P 97
 MILLBORNE HP FUTURE LADY-ETV 88 @ 3-04 (90/83)
 MILLBORNE HP FABULOUS-ETV 86 @ 4-02 (86/85)
 3-03 365D 2X 22520M 4.3% 962F 3.3% 737P DHIA
Reserve Jr. All-American & Nom. All-American Summer Yearling 2019
 SPRINGHILL GLADHEART FIFE-ET-P 86 @ 2-02 (86/85)
 SPRINGHILL JD FESTIVE-ETV-P 88 @ 2-06 (86/89)
Reserve Grand Champion Ohio State Fair 2024

MILLBORNE TILLER FANCY USA000068002577

Appraisal: 92 @ 4-08 (90/92)
 2-00 365D 2X 18190M 4.2% 760F 3.4% 613P DHIA
 3-05 365D 2X 23380M 4.4% 1039F 3.6% 843P DHIA
 4-10 365D 2X 19300M 4.5% 876F 3.5% 680P DHIA
Nominated All-American 4-Year-Old 2008

3D: R WAY ROYAL OAK FAYE USA000003068719 A2A2

Appraisal: 94 @ 4-03 (94/91)
 4-00 365D 2X 19590M 4.6% 892F 3.5% 688P DHIA
Unanimous All-American Junior Three-Year-Old 2003
All-American Junior Two-Year-Old 2002
Reserve All-American Four-Year-Old 2004
Honorable Mention All-American Five-Year-Old 2005
Honorable Mention All-American Summer Yearling 2001
Reserve Grand Champion NGS-Madison 2004
Intermediate Champion NGS-Madison 2003
 Dtr: R WAY MILLBORNE FAYES FLAIR 92 @ 3-09 (92/91)
 4-05 350D 2X 19750M 4.2% 839F 3.2% 641P 99

4D: CALLUMLEA BILLBOARD FLOSSIE USA000003050310

Appraisal: 89 @ 5-05
Nominated All-American Fall Calf 1997



Trixie!

Unanimous All-American Yearling in Milk 2019
 Unanimous Jr. All-American Yearling in Milk 2019
 HM All-American Sr. Two-Year-Old 2020
 HM Jr. All-American Sr. Two-Year-Old 2020
 HM All-American Sr. Three-Year-Old 2021
 HM Jr. All-American Sr. Three-Year-Old 2021
 Member, HM All-American Dam & Daughter 2020
 Grand Champion NJS-Madison 2019
 Reserve Intermediate Champion NGS-Madison 2019
 Grand Champion Northeast Fall Show 2020
 Grand Champion NY Spring Carousel 2021
 Grand Champion Northeast Spring Show 2021

Thurston Farms Primetime Trixie EX-92
 2-09 305D 3X 21,122M 4.0% 835F 3.3% 700P
 Mat. Sister to Dam of Lot 8; Granddam of Lot 9

LOT 8 3 #1 TORPEDO X TREASURE IVF EMBRYOS

Breeder & Owner: TAYLOR GLENN A & SHERYL
CASSVILLE NY
315.292.4230 twfarm.sheryl@gmail.com

- Three (3) #1 IVF embryos
- Reverse sorted semen used for Females
- Resulting calves will be A2A2 by parentage
- Located at Vytelle Lab, NY
- Embryos must be in buyer's possession within 60 days of sale

PA: +739M -0.11% +15F -0.03% +21P +174CM\$ +175NM\$
 +1.2PTAT +1.4UDC +1.6FLC -1.1DPR +1.0PL +70CPI 2.99SCS

LANG HAVEN LONDON TORPEDO 840003233414503 54GU520 A2A2

08/24 USDA GPTA +186M +0.01% +11F +0.04% +14P
 -0.7DPR -0.5PL +38NM\$ 23NM%ile +41CM\$ 60% Rel
 3.06SCS +0.3SCR 0.10HCR 30% Rel -0.90CCR 36% Rel
 -0.80LIV 29% Rel 1.70GL 43% Rel -2.50EFC 30% Rel
 AGA 08/24 PTAT +1.7 +2.0UDC +3.9FLC 60%Rel PTI +86

HERITAGE BRK NOVAK TREASURE-ET 840003143620927 A2A2

08/24 USDA GPTA +1291M -0.22% +19F -0.09% +27P
 -1.5DPR +2.5PL +311NM\$ 91NM%ile +306CM\$ 67% Rel
 2.92SCS-2.90HCR 35% Rel -3.00CCR 44% Rel
 0.80LIV 35% Rel 2.40GL 42% Rel 0.60EFC 36% Rel
 2 Rec YDev: +2884M +53F +60P
 4 App 08/24 PTAT +0.7 +0.8UDR -0.7FLC 66%Rel CPI +53
 Appraisal: EX 90 @ 5-08 (EEEEV)
 2-00 365D 3X 27620M 3.8% 1062F 2.9% 791P DHIA
 3-07 365D 3X 27410M 4.2% 1153F 3.0% 818P DHIA

LANG HAVEN GRUMPY NOVAK USA000068042542 7GU446 A2A2

08/24 USDA GPTA +1026M -0.10% +29F -0.03% +29P
 -3.4DPR +0.1PL +236NM\$ 61NM%ile +234CM\$ 98% Rel
 3.06SCS -4.40HCR 74% Rel -5.80CCR 89% Rel
 0.30LIV 67% Rel 2.80GL 99% Rel 2.90EFC 75% Rel
 AGA 08/24 PTAT +0.4 +0.7UDC -0.3FLC 97%Rel PTI +50

KNAPPS REGIS TROTTER-ETV USA000097000111 A2A2

Appraisal: VG 88 @ 7-09 (VE+VV)
 4-10 365D 3X 28670M 3.9% 1129F 3.1% 875P DHIA
 6-01 365D 3X 32500M 3.9% 1271F 2.9% 958P DHIA
 Dtrs: THURSTON FARMS PRIMETIME TRIXIE 92 @ 3-07 (91/94)
 2-09 305D 3X 21122M 4.0% 835F 3.3% 700P DHIA
 Unanimous All-American & Jr. All-American Yearling in Milk 2019
 HERITAGE BROOK PRIMETIME TRULY-ETV 85 @ 3-05 (85/84)
 2-05 305D 3X 17430M 5.0% 869F 3.3% 573P 104
 HERITAGE BROOK JAEGAR TRACY 88 @ 2-09 (88/88)

3D: KNAPPS ACE TAMERA USA000068006299

Appraisal: 93 @ 9-07 (91/92)
 9-07 365D 2X 32350M 4.2% 1351F 3.2% 1036P DHIA
 3038D 178720M 4.4% 7847F 3.4% 6004P LIFE
 24 Excellent Daughters & Counting!

4D: SUNRISE LUXURY TAMI USA000003068188

Appraisal: 93 @ 5-04 (92/92)
 3-10 365D 2X 28480M 4.2% 1198F 3.2% 907P DHIA
 2395D 151070M 4.0% 6087F 3.2% 4888P LIFE



Knapps Regis Tambourine-ET EX-95

190,040M 7.5% 14,236F 5.0% 9,483P Life
 Unanimous All-American Aged Cow 2015
 Full Sister to Granddam of Lot 8



Heritage Brook JD Trilogy-ETV

2nd Sr. Two-Year-Old Midwest Guernsey Show 2024
 3rd Fall Yearling NGS-Louisville 2023
 Dam of Lot 9; Mat. Family of Lot 8

LOT 9 3 #1 TORPEDO X TRILOGY IVF EMBRYOS

Breeder & Owner: GREWE BRYNN+HURST HANNAH+ POLK KYLE
CUMBERLAND WI
715.419.0745 vgguernseys@gmail.com

PA: +262M -0.06% +3F +0.01% +11P -28CM\$ -28NM\$
 +1.3PTAT +1.6UDC +2.6FLC -1.4DPR -0.6PL +50CPI 3.03SCS

LANG HAVEN LONDON TORPEDO 840003233414503 54GU520 A2A2

08/24 USDA GPTA +186M +0.01% +11F +0.04% +14P
 -0.7DPR -0.5PL +38NM\$ 23NM%ile +41CM\$ 60% Rel
 3.06SCS +0.3SCR 0.10HCR 30% Rel -0.90CCR 36% Rel
 -0.80LIV 29% Rel 1.70GL 43% Rel -2.50EFC 30% Rel
 AGA 08/24 PTAT +1.7 +2.0UDC +3.9FLC 60%Rel PTI +86

HERITAGE BROOK JD TRILOGY-ETV 840003236792576 A2A2

08/24 USDA GPTA +337M -0.12% -6F -0.03% +7P
 -2.1DPR -0.7PL -94NM\$ 13NM%ile -96CM\$ 63% Rel
 3.00SCS-1.30HCR 30% Rel -3.50CCR 30% Rel
 -1.50LIV 29% Rel 1.70GL 36% Rel -1.50EFC 27% Rel
 1 Rec YDev: +1181M +43F +36P
 0 App 08/24 PTAT +0.9 +1.2UDR +1.2FLC 55%Rel CPI +13
 3rd Fall Yearling NGS-Louisville 2023
 1st Fall Calf Guernsey Gold Showcase Jr. Show 2022
 2nd Sr. Two-Year-Old Midwest Guernsey Show 2024



Heritage Brook AP Tinsel-ETV EX-90

Nominated Jr. All-American 2021 & 2022
 Maternal Sister to Dam of Lot 9



Heritage Brook Lb Trillium-ET EX-92

2-00 327D 2X 18,130M 4.7% 849F 3.3% 700P
 Three-Time All-American
 Maternal Sister to Dam of Lot 9

- Three (3) #1 IVF embryos
- Reverse sorted semen used for Females
- Resulting calves will be A2A2 by parentage
- Located in Cumberland, WI
- Embryos must be in buyer's possession within 60 days of sale

SPRINGHILL JAMES DEAN-ETV 840003151591428 551GU911 A2A2

08/24 USDA GPTA -519M +0.15% +1F +0.10% +0P
 -1.1DPR +1.6PL +50NM\$ 23NM%ile +62CM\$ 82% Rel
 2.89SCS -1.90HCR 45% Rel -2.70CCR 43% Rel
 1.20LIV 39% Rel 1.10GL 70% Rel -4.50EFC 32% Rel
 AGA 08/24 PTAT +0.9 +1.4UDC +1.6FLC 77%Rel PTI +32

THURSTON FARMS PRIMETIME TRIXIE 840003126794988 A2A2

Appraisal: EX 92 @ 3-07 (EEEEEE)
 2-09 305D 3X 21122M 4.0% 835F 3.3% 700P DHIA
 Dtrs: HERITAGE BROOK LB TRILLIUM-ET 92 @ 3-07 (93/92)
 2-00 327D 2X 18130M 4.7% 849F 3.6% 654P 97
 All-American 2020, 2022, 2023
 HERITAGE BROOK LAT TRINITY-ETV 89 @ 2-09 (87/88)
 Nominated Junior All-American Fall Yearling 2022
 HERITAGE BROOK AP TINSEL-ETV 90 @ 3-05 (89/88)
 Nominated Jr. All-American 2021 & 2022
 HERITAGE BROOK JD TRIPPLE-ETV 86 @ 2-01 (85/88)
 HERITAGE BROOK JD TOOTSIE-ETV 85 @ 2-02 (84/86)
 HERITAGE BROOK DRONE TRINKET-ETV 83 @ 2-07 (82/82)
 All-American & Jr. All-American Spring Calf 2021
 HERITAGE BROOK JD TRIXTER-ETV 86 @ 2-05 (84/88)

3D: KNAPPS REGIS TROTTER-ETV USA000097000111 A2A2

Appraisal: VG 88 @ 7-09 (VE+VV)
 6-01 365D 3X 32500M 3.9% 1271F 2.9% 958P DHIA

4D: KNAPPS ACE TAMERA USA000068006299

Appraisal: 93 @ 9-07 (91/92)
 9-07 365D 2X 32350M 4.2% 1351F 3.2% 1036P DHIA
 3038D 178720M 4.4% 7847F 3.4% 6004P LIFE
 24 Excellent Daughters & Counting!



RHG Villa Breezy Venus-ET

Jr. Champ. Midwest Quality Spring Jr. Show 2024
 #32(T) CPI Heifer - August 2024
 Dam of Lots 10 & 11



Rozelyn Aaron Villa EX-94-2E GSD

163,750M 5.4% 8,778F 3.8% 6,190P
 Dam of VERNON & VIGOR
 Granddam of Lots 10 & 11

LOT 10 3 #1 COLLECTOR X VENUS IVF EMBRYOS

Breeder & Owner: PRITZL DOMINIC
CATO WI
920.905.5044 dominicpritzl@icloud.com

- Three (3) #1 IVF embryos
- Sexed semen used for Females
- Resulting calves will be A2A2 by parentage
- Resulting calves would rank in top 100 CPI Heifers - August 2024
- Located at TransOva, Wisconsin
- Embryos must be in buyer's possession within 60 days of sale

PA: +166M +0.16% +35F +0.04% +12P +361CM\$ +354NM\$
 +1.0PTAT +1.6UDC +1.0FLC -0.5DPR +3.0PL +85CPI 2.87SCS

DAIRYMAN COIN COLLECTOR 840003219111145 551GU916 A2A2

08/24 USDA GPTA -138M +0.18% +25F +0.02% -2P
 +1.3DPR +5.3PL +411NM\$ 92NM%ile +416CM\$ 58% Rel
 2.82SCS 1.70HCR 33% Rel 1.50CCR 37% Rel
 3.10LIV 30% Rel -0.60GL 46% Rel 5.90EFC 32% Rel
 AGA 08/24 PTAT +0.6 +1.7UDC +0.5FLC 58%Rel PTI +72

COULEE CREST TSUNAMI-ETV 840003214098840 200GU124 A2A2

08/24 USDA GPTA +263M +0.06% +23F +0.05% +17P
 -1.8DPR +2.5PL +282NM\$ 84NM%ile +289CM\$ 60% Rel
 2.89SCS -1.30HCR 39% Rel -2.90CCR 35% Rel
 1.40LIV 28% Rel 0.30GL 40% Rel 0.30EFC 30% Rel
 AGA 08/24 PTAT +0.7 +1.3UDC +0.4FLC 58%Rel PTI +64

RHG VILLA BREEZY VENUS-ET 840003253624119 A2A2

08/24 USDA GPTA +470M +0.13% +45F +0.06% +26P
 -2.3DPR +0.6PL +297NM\$ 89NM%ile +305CM\$ 53% Rel
 2.91SCS-0.60HCR 30% Rel -3.20CCR 30% Rel
 -0.60LIV 28% Rel 0.20GL 29% Rel 0.80EFC 28% Rel
 0 App 08/24 PTAT +1.3 +1.4UDR +1.5FLC 53%Rel CPI +97
Junior Champion Midwest Quality Spring Jr. Show 2024
Reserve Junior Champion Midwest Quality Spring Show 2024
HM Junior Champion Midwest Guernsey Show 2024
1st Winter Yearling Midwest Guernsey Show 2024
2nd Winter Yearling Midwest Spring Jr. Show 2024
2nd Winter Calf NE WI Protein Show 2023
3rd Winter Yearling Midwest Spring Show 2024
 #32(T) CPI Heifer - August 2024

ROZELYN AARON VILLA USA000068042242 A2A2

Appraisal: EX 94 @ 10-05 (EEEEEE) 2E Gold Star Dam - 2016
 2-00 350D 2X 19580M 5.0% 987F 3.5% 691P 101
 3-01 365D 2X 23380M 5.2% 1225F 3.6% 841P 101
 4-06 331D 2X 24420M 5.2% 1269F 3.6% 891P 101
 5-07 365D 2X 26110M 5.3% 1384F 3.8% 997P 101
 6-09 365D 2X 23900M 5.6% 1330F 3.9% 933P 102
 9-03 365D 2X 25010M 5.3% 1321F 3.7% 915P 99
 2617D 163750M 5.4% 8778F 3.8% 6190P LIFE
 Dam of VERNON at St Jacobs & VIGOR at Semex
 Dam of 10 of the top 200 CPI Heifers - August 2024
 Three-Time Total Performance Cow, NGS-Puyallup
 1st Five-Year-Old NGS-Puyallup 2016
 Dtrs: ROZELYN GOTCHA VILLAMAE 92 @ 7-00 (92/93)
 6-03 365D 2X 22080M 5.9% 1298F 3.8% 837P 98
 1st Aged Cow NGS-Lynden 2022
 ROZELYN L MAN VIANNE 94 @ 6-06 (93/93)
 6-00 305D 2X 30800M 5.4% 1660F 4.1% 1263P* 98
 Nominated All-American Five-Year-Old 2022
 ROZELYN BEAU VELLA-ET 88 @ 5-01 (90/85)
 4-03 365D 2X 19540M 5.4% 1048F 3.6% 698P 101

3D: ROZELYN SAMSON VIENNA USA000068018724 A2A2

Appraisal: 91 @ 8-03 (88/93)
 7-06 365D 2X 26530M 5.1% 1362F 3.6% 951P 101
 2925D 185590M 5.3% 9750F 3.6% 6705P LIFE



Rozelyn L Man Vianne EX-94

6-00 305D 2X 30,800M 5.4% 1,660F 4.1% 1,263P*
 Nominated All-American Five-Year-Old 2022
 Maternal Sister to Dam of Lots 10 & 11



Rozelyn Gotcha Villamae EX-92

6-03 365D 2X 22,080M 5.9% 1,298F 3.8% 837P
 1st Aged Cow NGS-Lynden 2022
 Maternal Sister to Dam of Lots 10 & 11

LOT 11 5 #1 TORPEDO X VENUS IVF EMBRYOS

Breeder & Owner: PRITZL DOMINIC

CATO WI
920.905.5044 dominicpritzl@icloud.com

PA: +328M +0.07% +28F +0.05% +12P +173CM\$ +168NM\$
 +1.5PTAT +1.7UDC +2.7FLC -1.5DPR +0.1PL +92CPI 2.99SCS

- Five (5) #1 IVF embryos
- Sexed semen used for Females
- Resulting calves will be A2A2 by parentage
- Resulting calves would rank #55 on CPI Heifer List - August 2024
- Located at TransOva, Wisconsin
- Embryos must be in buyer's possession within 60 days of sale

LANG HAVEN LONDON TORPEDO 840003233414503 54GU520 A2A2

08/24 USDA GPTA +186M +0.01% +11F +0.04% +14P
 -0.7DPR -0.5PL +38NM\$ 23NM%ile +41CM\$ 60% Rel
 3.06SCS +0.3SCR 0.10HCR 30% Rel -0.90CCR 36% Rel
 -0.80LIV 29% Rel 1.70GL 43% Rel -2.50EFC 30% Rel
 AGA 08/24 PTAT +1.7 +2.0UDC +3.9FLC 60%Rel PTI +86

COULEE CREST TSUNAMI-ETV 840003214098840 200GU124 A2A2

08/24 USDA GPTA +263M +0.06% +23F +0.05% +17P
 -1.8DPR +2.5PL +282NM\$ 84NM%ile +289CM\$ 60% Rel
 2.89SCS -1.30HCR 39% Rel -2.90CCR 35% Rel
 1.40LIV 28% Rel 0.30GL 40% Rel 0.30EFC 30% Rel
 AGA 08/24 PTAT +0.7 +1.3UDC +0.4FLC 58%Rel PTI +64

RHG VILLA BREEZY VENUS-ET 840003253624119 A2A2

08/24 USDA GPTA +470M +0.13% +45F +0.06% +26P
 -2.3DPR +0.6PL +297NM\$ 89NM%ile +305CM\$ 53% Rel
 2.91SCS-0.60HCR 30% Rel -3.20CCR 30% Rel
 -0.60LIV 28% Rel 0.20GL 29% Rel 0.80EFC 28% Rel
 0 App 08/24 PTAT +1.3 +1.4UDR +1.5FLC 53%Rel CPI +97
Junior Champion Midwest Quality Spring Jr. Show 2024
Reserve Junior Champion Midwest Quality Spring Show 2024
HM Junior Champion Midwest Guernsey Show 2024
1st Winter Yearling Midwest Guernsey Show 2024
2nd Winter Yearling Midwest Spring Jr. Show 2024
2nd Winter Calf NE WI Protein Show 2023
3rd Winter Yearling Midwest Spring Show 2024
 #32(T) CPI Heifer - August 2024

ROZELYN AARON VILLA USA000068042242 A2A2

Appraisal: EX 94 @ 10-05 (EEEEEE) 2E Gold Star Dam - 2016
 2-00 350D 2X 19580M 5.0% 987F 3.5% 691P 101
 3-01 365D 2X 23380M 5.2% 1225F 3.6% 841P 101
 4-06 331D 2X 24420M 5.2% 1269F 3.6% 891P 101
 5-07 365D 2X 26110M 5.3% 1384F 3.8% 997P 101
 6-09 365D 2X 23900M 5.6% 1330F 3.9% 933P 102
 9-03 365D 2X 25010M 5.3% 1321F 3.7% 915P 99
 2617D 163750M 5.4% 8778F 3.8% 6190P LIFE
 Dam of VERNON at St Jacobs & VIGOR at Semex
 Dam of 10 of the top 200 CPI Heifers - August 2024
 Three-Time Total Performance Cow, NGS-Puyallup
 1st Five-Year-Old NGS-Puyallup 2016
 Dtrs: ROZELYN GOTCHA VILLAMAE 92 @ 7-00 (92/93)
 6-03 365D 2X 22080M 5.9% 1298F 3.8% 837P 98
 1st Aged Cow NGS-Lynden 2022
 ROZELYN L MAN VIANNE 94 @ 6-06 (93/93)
 6-00 305D 2X 30800M 5.4% 1660F 4.1% 1263P* 98
 Nominated All-American Five-Year-Old 2022
 ROZELYN BEAU VELLA-ET 88 @ 5-01 (90/85)
 4-03 365D 2X 19540M 5.4% 1048F 3.6% 698P 101

3D: ROZELYN SAMSON VIENNA USA000068018724 A2A2

Appraisal: 91 @ 8-03 (88/93)
 7-06 365D 2X 26530M 5.1% 1362F 3.6% 951P 101
 2925D 185590M 5.3% 9750F 3.6% 6705P LIFE



Jensgolden Fayette Orianna EX-92

136,090M 4.6% 6,261F 3.7% 5,097P Lifetime

Dam of Royal Oak and Option

Maternal Family of Lots 12 & 13

LOT 12 4 #1 VERNON X ONALA IVF EMBRYOS

Breeder & Owner: HOARDS DAIRYMAN FARM

FORT ATKINSON WI

920.728.4822 hdfarm@hoards.com

PA: +312M +0.12% +35F +0.05% +19P +413CM\$ +405NM\$
+0.9PTAT +1.2UDC +1.8FLC +0.1DPR +3.5PL +98CPI 2.85SCS

- Four (4) #1 IVF embryos
- Sexed semen used for Females
- Resulting calves would rank #32 on the August 2024 CPI Heifer List
- Located at Sunshine Genetics, WI
- Embryos must be in buyer's possession within 60 days of sale

RHG VILLA LONDON VERNON-ETV 840003213010574 94GU960 A2A2

08/24 USDA GPTA +300M +0.06% +25F +0.05% +19P
-0.5DPR +1.4PL +246NM\$ 61NM%ile +251CM\$ 60% Rel
3.01SCS 0.40HCR 31% Rel -0.90CCR 37% Rel
-0.50LIV 31% Rel 0.50GL 43% Rel -1.50EFC 32% Rel
AGA 08/24 PTAT +1.1 +1.2UDC +2.5FLC 59%Rel PTI +88

RIPLEY FARMS AARON CORDELL USA000068027378 7GU440 A1A2

08/24 USDA GPTA +279M +0.06% +24F +0.01% +11P
-1.3DPR +1.4PL +158NM\$ 46NM%ile +163CM\$ 96% Rel
2.84SCS -0.20HCR 64% Rel -1.90CCR 86% Rel
-2.50LIV 66% Rel 1.10GL 98% Rel 1.70EFC 70% Rel
AGA 08/24 PTAT +0.2 +0.5UDC +0.1FLC 95%Rel PTI +34

JENSGOLDEN CORDELL ONALA 840003128753804 A1A2

08/24 USDA GPTA +323M +0.17% +44F +0.04% +18P
+0.6DPR +5.6PL +563NM\$ 99NM%ile +574CM\$ 70% Rel
2.69SCS-0.10HCR 34% Rel 0.10CCR 42% Rel
-0.20LIV 36% Rel 0.50GL 44% Rel 2.50EFC 36% Rel
5 Rec YDev: +1036M +108F +46P
3 App 08/24 PTAT +0.6 +1.2UDR +1.1FLC 73%Rel CPI +107
Appraisal: EX 91 @ 8-04 (EEEEV) Gold Star Dam - 2020
1-11 305D 2X 12000M 5.6% 674F 3.7% 442P 95
3-02 365D 2X 21863M 5.5% 1200F 3.7% 816P DHIA
4-04 339D 2X 22540M 5.7% 1291F 3.7% 836P 96
5-05 365D 3X 29840M 5.3% 1571F 3.6% 1080P DHIA
6-07 365D 3X 29080M 5.7% 1650F 3.6% 1044P DHIA
7-09 365D 3X 26520M 5.2% 1367F 3.5% 941P DHIA
2296D 149220M 5.5% 8224F 3.7% 5460P LIFE

JENSGOLDEN DOUBLE L ONALYN USA000068031379 A1A2

Appraisal: VG 88 @ 8-08 (VEVE+) Gold Star Dam - 2018
2-00 288D 2X 13530M 4.7% 632F 3.3% 443P 91
2-11 311D 2X 15540M 5.0% 778F 3.5% 550P 97
3-10 337D 2X 21380M 4.6% 991F 3.3% 711P 97
4-11 304D 2X 17930M 4.7% 845F 3.4% 604P 97
5-11 308D 2X 19460M 4.9% 952F 3.5% 686P 96
6-11 305D 2X 19570M 4.3% 849F 3.6% 701P 96
8-01 305D 2X 20180M 4.6% 927F 3.4% 691P 96
9-02 326D 2X 20250M 4.7% 947F 3.2% 657P 74
10-03 257D 2X 14960M 4.1% 614F 3.2% 479P 93
2887D 169930M 4.6% 7880F 3.4% 5797P LIFE
Dtr: JENSGOLDEN PENNEY ONLISA 86 @ 3-06 (86/87)

#13(T) CPI Cow August 2024

Dam of #2 GPTI Young Sire 49GU242 OLAF @ GMS

Dam of 3 daughters in the top 110 CPI Heifers - August 2024

Dtrs: JENSGOLDEN CHARMING ONADIA 84 @ 4-06 (84/78)

3-01 318D 3X 19960M 6.0% 1205F 3.8% 759P 104

#82(T) CPI Cow August 2024

DAIRYMAN CHECKMATE 5250 OHEAVENS-ET 82 @ 1-11 (80/84)

#25(T) CPI Cow August 2024

LOT 13 4 #1 AMERICAN PIE X ONALA IVF EMBRYOS

Breeder & Owner: HOARDS DAIRYMAN FARM

FORT ATKINSON WI

920.728.4822 hdfarm@hoards.com

PA: +227M -0.01% +9F +0.00% +8P +264CM\$ +258NM\$
+0.4PTAT +0.8UDC +1.5FLC -0.8DPR +4.4PL +46CPI 2.72SCS

- Four (4) #1 IVF embryos
- Reverse sorted semen used for Females
- Located at Sunshine Genetics, WI
- Embryos must be in buyer's possession within 60 days of sale

INDIAN ACRES AMERICAN PIE USA000068016348 31GU618 A2A2

08/24 USDA GPTA +131M -0.19% -27F -0.04% -2P
-2.2DPR +3.2PL -48NM\$ 7NM%ile -46CM\$ 98% Rel
2.75SCS -3.60HCR 71% Rel -3.40CCR 91% Rel
-0.30LIV 76% Rel 0.80GL 98% Rel -7.90EFC 80% Rel
AGA 08/24 PTAT +0.1 +0.3UDC +1.8FLC 98%Rel PTI -15

JENSGOLDEN CORDELL ONALA 840003128753804 A1A2

Appraisal: EX 91 @ 8-04 (EEEEV) Gold Star Dam - 2020
2296D 149220M 5.5% 8224F 3.7% 5460P LIFE



Unos AP Uriah-ETV

Nom. Junior All-American Fall Calf 2023
Res. Jr. Champion Kentucky State Fair 2023
Dam of Lot 14; Maternal Sister to Dam of Lots 15 & 16

Unos AP Unity-ETV

1st Fall Calf Guernsey Gold Showcase 2023
Full Sister to Dam of Lot 14
Maternal Sister to Dam of Lots 15 & 16

LOT 14 3 #1 TORPEDO X URIAH IVF EMBRYOS

Breeder & Owner: STORM LILYANN & HAYES LUCAS
BRODHEAD KY
859.582.0107 mhhayes23@hotmail.com

- Three (3) #1 IVF embryos
- Sexed semen used for Females
- Resulting calves will be A2A2 by parentage
- Located at Vytelle, Ohio
- Embryos must be in buyer's possession within 60 days of sale

PA: +143M -0.04% +1F +0.01% +7P +1CM\$ +1NM\$
+1.3PTAT +1.4UDC +2.9FLC -1.1DPR +0.7PL +50CPI 3.05SCS

LANG HAVEN LONDON TORPEDO 840003233414503 54GU520 A2A2

08/24 USDA GPTA +186M +0.01% +11F +0.04% +14P
-0.7DPR -0.5PL +38NM\$ 23NM%ile +41CM\$ 60% Rel
3.06SCS +0.3SCR 0.10HCR 30% Rel -0.90CCR 36% Rel
-0.80LIV 29% Rel 1.70GL 43% Rel -2.50EFC 30% Rel
AGA 08/24 PTAT +1.7 +2.0UDC +3.9FLC 60%Rel PTI +86

INDIAN ACRES AMERICAN PIE USA000068016348 31GU618 A2A2

08/24 USDA GPTA +131M -0.19% -27F -0.04% -2P
-2.2DPR +3.2PL -48NM\$ 7NM%ile -46CM\$ 98% Rel
2.75SCS -3.60HCR 71% Rel -3.40CCR 91% Rel
-0.30LIV 76% Rel 0.80GL 98% Rel -7.90EFC 80% Rel
AGA 08/24 PTAT +0.1 +0.3UDC +1.8FLC 98%Rel PTI -15

UNOS AP URIAH-ETV 840003253913888 A2A2

08/24 USDA GPTA +100M -0.08% -9F -0.03% -1P
-1.4DPR +1.9PL -37NM\$ 23NM%ile -40CM\$ 59% Rel
3.04SCS-2.90HCR 34% Rel -2.80CCR 41% Rel
0.10LIV 37% Rel 0.30GL 41% Rel -5.40EFC 38% Rel
0 App 08/24 PTAT +0.9 +0.8UDR +1.9FLC 59%Rel CPI +13
Nominated Junior All-American Fall Calf 2023
Reserve Junior Champion Kentucky State Fair 2023

SPRINGHILL KOJACK UNO-ETV 840003132117634

Appraisal: EX 95 @ 7-00 (EEEEEE)
2-02 305D 2X 15740M 4.5% 716F 3.5% 551P 95
4-00 331D 2X 22200M 3.7% 829F 3.3% 722P 84
5-07 304D 2X 22820M 5.0% 1152F 3.5% 797P 98
6-09 365D 2X 35790M 5.3% 1889F 3.4% 1216P DHIA
1643D 110850M 4.9% 5473F 3.6% 4007P LIFE
Unanimous All-American Five-Year-Old 2021
Unanimous All-American Aged Cow 2023
Reserve All-American & Jr. AA Aged Cow 2022
Res. All-American & Unan. Jr. AA Sr. Two-Year-Old 2018
Member, All-American Produce of Dam 2018 & 2023
Member, AA Best Three Females 2018, 2021, 2023
Grand Champion NGS-Madison 2023
Grand Champion NGS- & NJS-Louisville 2022
Total Performance Cow NGS-Madison 2023
Total Performance Cow NJS-Louisville 2022
Dam of UNANIMOUS at Guernsey Gold Sires

3D: CAMPBELLS RODNEYS UNIFY USA000003081349

Appraisal: 94 @ 12-06 (94/91)
4-11 365D 2X 22410M 4.2% 939F 3.6% 810P DHIA
3300D 166950M 4.0% 6746F 3.4% 5603P LIFE
Junior All-American Aged Cow 2009
Honorable Mention All-American Aged Cow 2009
Reserve Junior All-American Sr. Three-Year-Old 2006
HM All-American & HM Jr. All-American Aged Cow 2015
Honorable Mention Jr. All-American Aged Cow 2012
Nom. All-American & HM Jr. All-American Fall Yearling 2004
Nominated Junior All-American Aged Cow 2014
Dam of Six All-American Nominees in Milking Form
Dam of an All-American & Res. All-American Produce of Dam
11 Excellent daughters to date

4D: CAMPBELLS INTEREST UGANDA USA000003066100

Appraisal: 86 @ 4-03 (88/82)

5D: GR-CAMPBELLS KINGS UNEEDA USA000003045642

Appraisal: 87 @ 8-00 (85/86)



Uno!

Unanimous All-American Five-Year-Old 2021
 Unanimous All-American Aged Cow 2023
 Reserve All-American Aged Cow 2022
 Junior All-American Aged Cow 2022
 Res. All-American Sr. Two-Year-Old 2018
 Unanimous Jr. All-American Sr. Two-Year-Old 2018
 Member, All-American Produce of Dam 2018 & 2023
 Member, AA Best Three Females 2018, 2021, 2023
 Grand Champion NGS-Madison 2023
 Grand Champion NGS- & NJS-Louisville 2022
 Total Performance Cow NGS-Madison 2023
 Total Performance Cow NJS-Louisville 2022
 Dam of UNANIMOUS at Guernsey Gold Sires

Springhill Kojack Uno-ETV EX-95
 110,850M 4.9% 5,473F 3.6% 4,007P Life
 Granddam of Lots 14 - 16

LOT 15 5 #1 AMERICAN PIE X UNHINGED IVF EMBRYOS

Breeder & Owner: ALLEN THOMAS & CAROLINE
VERGENNES VT
802.989.9690 rebecca.whitcomb@gmail.com

- Five (5) #1 IVF embryos
- Reverse sorted semen used for Females
- Located at TransOva, MD
- Embryos must be in buyer's possession within 60 days of sale

PA: +243M -0.14% -12F -0.04% +2P -71CM\$ -67NM\$
 +0.7PTAT +0.8UDC +1.8FLC -2.3DPR +1.5PL +6CPI 3.01SCS

INDIAN ACRES AMERICAN PIE USA000068016348 31GU618 A2A2

08/24 USDA GPTA +131M -0.19% -27F -0.04% -2P
 -2.2DPR +3.2PL -48NM\$ 7NM%ile -46CM\$ 98% Rel
 2.75SCS -3.60HCR 71% Rel -3.40CCR 91% Rel
 -0.30LIV 76% Rel 0.80GL 98% Rel -7.90EFC 80% Rel
 AGA 08/24 PTAT +0.1 +0.3UDC +1.8FLC 98%Rel PTI -15

HI GUERN VIEW LEVI DRONE USA000097004646 94GU959 A2A2

08/24 USDA GPTA +544M -0.12% +3F -0.10% +1P
 -2.4DPR +1.0PL -45NM\$ 7NM%ile -61CM\$ 94% Rel
 3.36SCS -2.00HCR 58% Rel -3.50CCR 73% Rel
 -0.10LIV 46% Rel -0.40GL 95% Rel -3.80EFC 57% Rel
 AGA 08/24 PTAT +1.4 +1.5UDC +2.3FLC 94%Rel PTI +33

UNOS DRONE UNHINGED-ETV 840003253913900

08/24 USDA GPTA +354M -0.08% +3F -0.03% +6P
 -2.3DPR -0.3PL -86NM\$ 14NM%ile -95CM\$ 59% Rel
 3.27SCS -2.20HCR 32% Rel -3.30CCR 38% Rel
 0.00LIV 31% Rel 0.10GL 41% Rel -4.10EFC 33% Rel
 0 App 08/24 PTAT +1.3 +1.3UDR +1.7FLC 59%Rel CPI +27
 1st Winter Calf New England Classic Open & Jr Show 2023
 1st Winter Calf Northeast Spring Jr. Show 2023
 2nd Winter Calf Northeast Spring Show 2023
 2nd Winter Yearling Northeast Spring Show 2024

SPRINGHILL KOJACK UNO-ETV 840003132117634

Appraisal: EX 95 @ 7-00 (EEEEEE)
 2-02 305D 2X 15740M 4.5% 716F 3.5% 551P 95
 4-00 331D 2X 22200M 3.7% 829F 3.3% 722P 84
 5-07 304D 2X 22820M 5.0% 1152F 3.5% 797P 98
 6-09 365D 2X 35790M 5.3% 1889F 3.4% 1216P DHIA
 1643D 110850M 4.9% 5473F 3.6% 4007P LIFE

LOT 16 5 #1 MISSILE X UNHINGED IVF EMBRYOS

Breeder & Owner: ALLEN THOMAS & CAROLINE
VERGENNES VT
802.989.9690 rebecca.whitcomb@gmail.com

- Five (5) #1 IVF embryos
- Sexed semen used for Females
- Located at TransOva, MD
- Embryos must be in buyer's possession within 60 days of sale

PA: -348M +0.07% -5F +0.04% -7P -120CM\$ -117NM\$
 +1.3PTAT +1.6UDC +1.7FLC -1.2DPR +0.3PL +15CPI 3.21SCS

VALLEY GEM MISSILE-ETV 840003208696258 200GU125 A2A2

08/24 USDA GPTA -1049M +0.22% -12F +0.10% -20P
 +0.0DPR +0.8PL -147NM\$ 0NM%ile -144CM\$ 58% Rel
 3.15SCS -2.40HCR 32% Rel -0.70CCR 40% Rel
 2.30LIV 36% Rel -0.20GL 39% Rel -4.70EFC 35% Rel
 AGA 08/24 PTAT +1.2 +1.8UDC +1.7FLC 58%Rel PTI +2

UNOS DRONE UNHINGED-ETV 840003253913900

Unos Drone Unhinged-ETV
 Dam of Lots 15 & 16
 Maternal Sister to Dam of Lot 14





Up The Creek Londons Cooper EX-93-2E
 5-10 359D 2X 23,070M 4.5% 1,047F 3.4% 787P
 Dam of Lot 17



Up The Creek Neon Cavalier
 All-American Summer Yearling 2007
 Maternal Family of Lot 17

LOT 17 6 #1 VERNON X COOPER IVF EMBRYOS

Breeder & Owner: ANDERSON DONNA
LESTER PRAIRIE MN
320.395.2023 upthecreekguernseys@gmail.com

- Six (6) #1 IVF embryos
- Sexed semen used for Females
- Resulting calves will be A2A2 by parentage
- Located in Lester Prairie, MN
- Embryos must be in buyer's possession within 60 days of sale

PA: +402M -0.01% +17F +0.03% +19P +113CM\$ +111NM\$
 +1.2PTAT +1.0UDC +2.7FLC -1.2DPR +0.0PL +69CPI 3.07SCS

RHG VILLA LONDON VERNON-ETV 840003213010574 94GU960 A2A2

08/24 USDA GPTA +300M +0.06% +25F +0.05% +19P
 -0.5DPR +1.4PL +246NM\$ 61NM%ile +251CM\$ 60% Rel
 3.01SCS 0.40HCR 31% Rel -0.90CCR 37% Rel
 -0.50LIV 31% Rel 0.50GL 43% Rel -1.50EFC 32% Rel
 AGA 08/24 PTAT +1.1 +1.2UDC +2.5FLC 59%Rel PTI +88

GOLDEN I LONDON USA000068039423 54GU481 A2A2

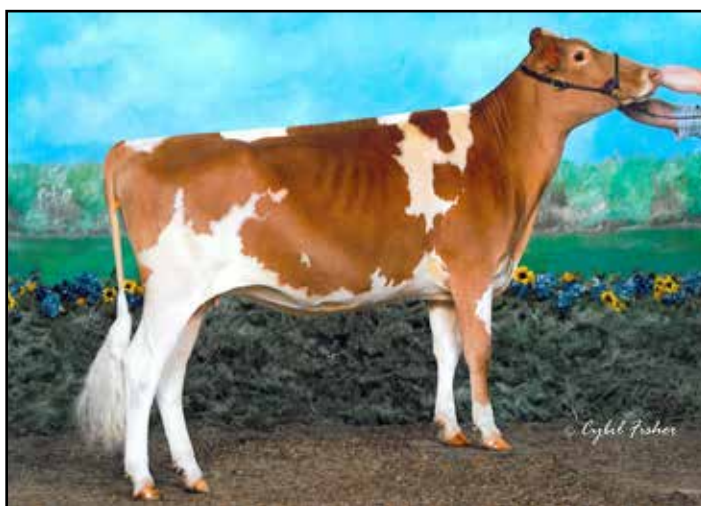
08/24 USDA PTA +793M -0.11% +17F -0.03% +21P
 -1.2DPR -2.2PL +13NM\$ 15NM%ile +7CM\$ 82% Rel
 3.20SCS 0.80HCR 29% Rel -0.90CCR 54% Rel
 -1.60LIV 26% Rel 0.80GL 90% Rel -6.90EFC 29% Rel
 AGA 08/24 PTAT +1.1 +0.7UDC +2.4FLC 81%Rel PTI +62

UP THE CREEK LONDONS COOPER 840003146905264 A2A2

08/24 USDA GPTA +503M -0.08% +9F +0.01% +18P
 -1.8DPR -1.4PL -24NM\$ 25NM%ile -25CM\$ 67% Rel
 3.13SCS -0.70HCR 29% Rel -2.80CCR 42% Rel
 -2.90LIV 29% Rel 0.00GL 44% Rel -2.50EFC 29% Rel
 4 Rec YDev: +1329M +27F +45P
 5 App 08/24 PTAT +1.2 +0.7UDR +2.8FLC 70%Rel CPI +50
 Appraisal: EX 93 @ 6-01 (EEEE) 2E
 2-04 305D 2X 14590M 4.4% 639F 3.3% 478P 96
 3-08 359D 2X 20500M 4.6% 950F 3.5% 726P 97
 4-10 315D 2X 17410M 4.6% 793F 3.6% 627P 98
 5-10 359D 2X 23070M 4.5% 1047F 3.4% 787P 98
 1st Fall Yearling Minnesota State Fair 2019
 Dtr: UP THE CREEK DRONES COUNTDOWN 82 @ 3-00 (79/82)
 2-00 365D 2X 19340M 4.4% 851F 3.2% 618P DHIA

UP THE CREEK LAKODA COPPER 840003013954280

Appraisal: VG 88 @ 4-10 (EEVV)
 2-00 365D 3X 17810M 4.6% 817F 3.6% 635P DHIA
 3-03 365D 3X 20540M 4.7% 975F 3.8% 781P DHIA
 4-06 313D 2X 20940M 4.6% 959F 3.5% 726P 97



Up The Creek Alstar Cutlass GP-84
 Nominated Junior All-American Fall Yearling 2011
 Maternal Family of Lot 17



Springhill Fame Calypso-ETV EX-93

5-02 365D 2X 28,010M 4.6% 1,296F 3.6% 1,005P
Maternal Sister to Lot 18

LOT 18 4 #2 JC PENNEY X CONNY IVF EMBRYOS

Breeder & Owner: **SPRINGHILL**
BIG PRAIRIE OH
330.473.9660 springhill.chris@gmail.com

PA: +122M +0.01% +8F +0.02% +8P +76CM\$ +73NM\$
+0.8PTAT +0.6UDC +1.3FLC -1.9DPR +0.9PL +26CPI 3.01SCS

SPRINGHILL JC PENNEY-ET 840003151591406 6GU114 A2A2

08/24 USDA GPTA -186M +0.04% -1F -0.01% -8P
-3.3DPR +1.1PL -94NM\$ 0NM%ile -94CM\$ 88% Rel
2.94SCS -3.00HCR 47% Rel -5.20CCR 54% Rel
-0.10LIV 35% Rel 0.10GL 90% Rel -2.20EFC 44% Rel
AGA 08/24 PTAT +0.7 +1.2UDC +1.7FLC 87%Rel PTI +0

NELLS GLOW CHALLENGE CONNY USA000068028537

08/24 USDA GPTA +430M -0.02% +17F +0.05% +24P
-0.5DPR +0.7PL +240NM\$ 83NM%ile +245CM\$ 75% Rel
3.07SCS -2.20HCR 38% Rel -0.70CCR 49% Rel
-0.80LIV 42% Rel -0.10GL 46% Rel -4.10EFC 40% Rel
5 Rec YDev: +1055M +48F +52P
3 App 08/24 PTAT +0.8 -0.1UDR +0.9FLC 76%Rel CPI +51
Appraisal: 93 @ 7-11 (92/91)
2-03 365D 2X 19560M 4.8% 930F 3.6% 695P 101
3-05 305D 2X 21110M 4.5% 954F 3.4% 724P 102
4-08 365D 2X 25430M 4.5% 1147F 3.4% 872P DHIA
6-03 334D 2X 24810M 4.8% 1179F 3.6% 887P 102
7-02 365D 2X 24990M 5.1% 1267F 4.0% 988P DHIA
10-06 303D 2X 14320M 4.7% 677F 3.2% 463P 96
2546D 156440M 4.9% 7597F 3.7% 5725P LIFE
Reserve Junior All-American Five-Year-Old 2013
NELLS GLOW CONNY OF SPRINGHILL 86 @ 3-09 (84/86)
2-05 365D 2X 25170M 4.8% 1196F 3.5% 877P DHIA
Junior All-American Winter Yearling 2014
SPRINGHILL JUDGMENT CLEMENTINE 87 @ 4-00 (87/87)
3-07 365D 2X 19400M 4.8% 922F 3.6% 694P DHIA
SPRINGHILL KOJACK COLUMBIA-ETV 90 @ 5-09 (89/88)
4-04 365D 2X 32380M 4.1% 1341F 3.4% 1116P DHIA
SPRINGHILL FAME CALYPSO-ETV 93 @ 6-01 (93/94)
5-02 365D 2X 28010M 4.6% 1296F 3.6% 1005P DHIA
SPRINGHILL TILLER CALICO-ETV
All-American 2021 & 2022



Springhill Kojack Columbia-ETV EX-90

4-04 365D 2X 32,380M 4.1% 1,341F 3.4% 1,116P
Maternal Sister to Lot 18

- Four (4) #2 IVF embryos
- Reverse sorted semen used for Females
- Located at TransOva, Maryland
- Embryos must be in buyer's possession within 60 days of sale

IDLE GOLD E CHALLENGE-ET USA000000604268 1GU418 A2A2

08/24 USDA GPTA -602M +0.16% -1F +0.10% -3P
+1.0DPR +0.8PL +108NM\$ 30NM%ile +119CM\$ 98% Rel
2.88SCS -2.90HCR 81% Rel 1.30CCR 95% Rel
-1.00LIV 86% Rel -0.20GL 99% Rel -6.40EFC 88% Rel
AGA 08/24 PTAT -0.3 -0.4UDC +1.0FLC 99%Rel PTI +1

RIPLEY FARMS SP CONI SUE-ET USA000068008643

Appraisal: 82 @ 2-10 (82/85)
2-04 365D 2X 25550M 4.3% 1086F 3.3% 851P DHIA
3-10 307D 2X 19580M 4.4% 863F 3.6% 697P 101

3D: LOW BROOK GOLDFOOT CONNY USA000003067544

Appraisal: 90 @ 4-04 (86/90)
1715D 123780M 4.7% 5824F 3.6% 4404P LIFE



Nells Glow Challenge Conny EX-93

156,440M 4.9% 7,597F 3.7% 5,725P Life
Reserve Junior All-American Five-Year-Old 2013
Dam of Lot 18



Hartdale Alstar Cutie EX-93-2E

158,720M 4.2% 6,735F 3.1% 4,984P Lifetime
Reserve Jr. All-American Jr. Three-Year-Old 2014
Granddam of Lot 19



Hartdale Kringle Clementine EX-91

122,950M 5.4% 6,583F 3.6% 4,449P Lifetime
Nominated All-American Four-Year-Old 2017
Full Sister to Dam of Lot 19

LOT 19 5 #1 MISSILE X CRESCENT IVF EMBRYOS

Breeder & Owner: NC MTN CATTLE CO

ENNICE NC
336.363.4639 atompkin@vt.edu

PA: -590M +0.19% +4F +0.05% -13P -48CM\$ -48NM\$
+0.6PTAT +0.3UDC -0.1FLC -0.2DPR +0.8PL -9CPI 3.13SCS

- Five (5) #1 IVF embryos
- Sexed semen used for Females
- Resulting calves are potential 7th generation Excellents!
- Located at TransOva, Maryland
- Embryos must be in buyer's possession within 60 days of sale

VALLEY GEM MISSILE-ETV 840003208696258 200GU125 A2A2

08/24 USDA GPTA -1049M +0.22% -12F +0.10% -20P
+0.0DPR +0.8PL -147NM\$ ONM%ile -144CM\$ 58% Rel
3.15SCS -2.40HCR 32% Rel -0.70CCR 40% Rel
2.30LIV 36% Rel -0.20GL 39% Rel -4.70EFC 35% Rel
AGA 08/24 PTAT +1.2 +1.8UDC +1.7FLC 58%Rel PTI +2

CHUPPS HILLPOINT GDUST KRINGLE-ET USA000068019860 31GU622 A2A2

08/24 USDA GPTA -935M +0.31% +8F +0.05% -23P
-2.6DPR -3.0PL -249NM\$ ONM%ile -254CM\$ 92% Rel
3.34SCS -1.60HCR 45% Rel -2.80CCR 75% Rel
-3.40LIV 51% Rel -0.70GL 92% Rel 1.70EFC 54% Rel
AGA 08/24 PTAT +0.3 -0.5UDC -1.2FLC 92%Rel PTI -73

HARTDALE KRINGLE CRESCENT USA000097002243

08/24 USDA PTA -131M +0.15% +19F -0.01% -6P
-0.3DPR +0.7PL +52NM\$ 43NM%ile +49CM\$ 47% Rel
3.10SCS-0.80HCR 20% Rel -0.70CCR 30% Rel
0.40LIV 23% Rel -0.50GL 34% Rel 1.80EFC 23% Rel
1 Rec YDev: +906M +79F +24P
3 App 08/24 PTAT +0.0 -1.3UDR -1.9FLC 38%Rel CPI -20
Appraisal: EX 90 @ 7-01 (EEVVV)
2-02 305D 2X 17140M 4.3% 739F 3.2% 552P 97
1st Summer Yearling Illinois State Fair Jr. Show 2017

HARTDALE ALSTAR CUTIE USA000068043444

Appraisal: EX 93 @ 10-04 (EEVEE) 2E
2-00 335D 2X 20840M 4.2% 866F 3.1% 653P 94
3-00 288D 2X 23320M 4.2% 974F 3.1% 733P 97
4-00 305D 2X 24690M 3.8% 938F 3.0% 753P 97
5-03 305D 2X 22510M 4.4% 998F 3.0% 677P 97
6-06 348D 2X 24360M 4.4% 1078F 3.2% 783P 97
7-07 305D 2X 25510M 4.2% 1080F 3.0% 766P 98
2315D 158720M 4.2% 6735F 3.1% 4984P LIFE
Reserve Jr. All-American Jr. Three-Year-Old 2014
Nominated All-American Jr. Three-Year-Old 2014
Grand Champion Illinois State Fair Jr. Show 2015
Reserve Grand Champion Illinois State Fair 2014
Dam of CALVARY at Masterpiece Genetics
Dtrs: HARTDALE KRINGLE CLEMENTINE 91 @10-07 (90/88)
10-04 359D 3X 18380M 6.2% 1148F 3.8% 706P 94
Nominated All-American Four-Year-Old 2017
HARTDALE TOP NOTCH COCO 91 @ 5-06 (90/93)
5-03 339D 2X 20040M 3.7% 741F 3.1% 617P 97
Three-Time Reserve Junior All-American
HARTDALE MENTOR COCONUT 94 @ 6-09 (94/91)
6-04 285D 3X 25480M 4.0% 1015F 3.0% 757P 100
Five-Time All-American Nominee
HARTDALE SPRINGHILL JCP CABO-ETV 85 @ 2-00 (83/86)

3D: HARTDALE SHOWTIME CONFETTI USA000068025982

Appraisal: 91 @ 7-05 (90/88)
3-11 355D 2X 22930M 4.5% 1037F 3.2% 733P 98
1919D 115530M 4.6% 5342F 3.2% 3711P LIFE
Reserve All-American Winter Yearling 2010
Nominated All-American Aged Cow 2015

4D: LEBANON VALLEY G CANDY USA000003046342

Appraisal: 92 @ 11-04 (91/90)
3-02 365D 2X 22067M 5.4% 1181F 3.3% 739P DHIA
2405D 115874M 5.1% 5911F 3.4% 3979P LIFE

5D: LEBANON VALLEY SUPREME KATIE USA000003023403

Appraisal: 93 @ 11-01 (93/90)
5-04 305D 3X 23700M 4.0% 943F 3.3% 782P DHIR
2509D 128950M 4.6% 5911F 3.3% 4266P LIFE

6D: LEBANON VALLEY SUPER KRUNCH USA000002986934

Appraisal: 91 @ 8-06
8-05 365D 3X 22540M 4.2% 944F 3.3% 754P DHIA
2279D 107080M 4.5% 4804F 3.4% 3589P LIFE



Springhill Pies Jazzu-ETV EX-93

3-03 365D 2X 21,470M 4.9% 1,056F 3.5% 751P
Member, HM All-American Produce of Dam 2023
Dam of Lot 20



Springhill Mentor Jazzy-ET EX-95

4-06 365D 2X 34,720M 5.2% 1,799F 3.6% 1,260P
Three-Time Unanimous All-American
Granddam of Lot 20

LOT 20 4 #1 COLLECTOR X JAZZU IVF EMBRYOS

**Breeder & Owner: SPRINGHILL
BIG PRAIRIE OH
330.473.9660 springhill.chris@gmail.com**

- Four (4) #1 IVF embryos
- Reverse sorted semen used for Females
- Resulting calves will be A2A2 by parentage
- Located at TransOva, Maryland
- Embryos must be in buyer's possession within 60 days of sale

PA: -42M +0.10% +15F +0.03% +3P +197CM\$ +194NM\$
+1.2PTAT +1.8UDC +1.7FLC -0.6DPR +2.9PL +59CPI 2.95SCS

DAIRYMAN COIN COLLECTOR 840003219111145 551GU916 A2A2

08/24 USDA GPTA -138M +0.18% +25F +0.02% -2P
+1.3DPR +5.3PL +411NM\$ 92NM%ile +416CM\$ 58% Rel
2.82SCS 1.70HCR 33% Rel 1.50CCR 37% Rel
3.10LIV 30% Rel -0.60GL 46% Rel 5.90EFC 32% Rel
AGA 08/24 PTAT +0.6 +1.7UDC +0.5FLC 58%Rel PTI +72

INDIAN ACRES PIES-ET USA000068024088 94GU958 A2A2

08/24 USDA GPTA +401M -0.10% +0F +0.03% +19P
-3.0DPR -0.7PL -40NM\$ 7NM%ile -39CM\$ 92% Rel
3.17SCS -3.50HCR 52% Rel -3.60CCR 73% Rel
-2.30LIV 57% Rel -1.30GL 91% Rel -8.70EFC 60% Rel
AGA 08/24 PTAT +1.0 +0.6UDC +2.5FLC 89%Rel PTI +29

SPRINGHILL PIES JAZZU-ETV 840003151591391 A2A2

08/24 USDA GPTA +55M +0.01% +5F +0.03% +7P
-2.4DPR +0.4PL -24NM\$ 25NM%ile -23CM\$ 71% Rel
3.07SCS-3.30HCR 34% Rel -3.60CCR 45% Rel
-0.70LIV 35% Rel -0.30GL 50% Rel -6.60EFC 37% Rel
3 Rec YDev: +406M +19F +21P
6 App 08/24 PTAT +1.8 +1.8UDR +2.8FLC 73%Rel CPI +45
Appraisal: EX 93 @ 5-01 (EEEEEE)
2-00 365D 2X 20860M 4.4% 921F 3.5% 725P DHIA
3-03 365D 2X 21470M 4.9% 1056F 3.5% 751P DHIA
4-05 308D 2X 21170M 4.1% 874F 3.5% 746P 97
Dam of JUNGLE at Guernsey Gold Sires
Member, HM All-American Produce of Dam 2023
6th Four-Year-Old NGS-Madison 2023
DTR: SPRINGHILL THEO JONESBORO
Junior Champion Illinois State Fair Jr. Show 2023

SPRINGHILL MENTOR JAZZY-ET USA000068031553 A2A2

Appraisal: EX 95 @ 6-09 (EEEEEE)
2-05 339D 2X 21420M 5.0% 1064F 3.3% 715P 96
3-05 365D 2X 27690M 5.7% 1587F 3.7% 1013P 97
4-06 365D 2X 34720M 5.2% 1799F 3.6% 1260P* DHIA
Unanimous All-American Four-Year-Old 2017
Unanimous All-American Sr. Three-Year-Old 2016
Unanimous All-American Fall Calf 2013
All-American Fall Yearling 2014
Reserve All-American Aged Cow 2019
Grand Champion NGS-Madison 2017
Total Performance Cow NGS-Madison 2019
3x Grand Champion - Ohio State Fair
Dam of JC Penney, James Dean, Java-P & Jack Daniels-P
Five Excellent & 14 Very Good daughters to date

3D: DIX LEE TILLER JOKE USA000068001932

Appraisal: 93 @ 5-08 (93/92)
2-00 365D 2X 24167M 4.8% 1158F 3.3% 794P 92
5-06 365D 2X 31350M 4.9% 1543F 3.3% 1033P DHIA
Dam of Jester, Judgment, Jackpot, Lone Star, Jaguar
Dam of 13 Excellent Daughters
All-American Jr. 2-Year-Old 2006
Reserve All-American 5-Year-Old 2009

4D: DIX LEE JIFFY JIPSY USA000003066162

Appraisal: 90 @ 5-01 (88/90)
4-08 365D 2X 25080M 4.6% 1142F 3.4% 852P DHIA

5D: DIX LEE SMOKEY BEAR JIGGER USA000003036554

Appraisal: 84 @ 4-06
6-00 350D 2X 18990M 3.8% 728F 3.3% 618P DHIA

6D: DIX LEE BRETT'S BIONIC JINGLE USA000003004382

Appraisal: 86 @ 5-06

7D: DIX LEE FAYETTE JINGO USA000002984299

Appraisal: 90 @ 3-11
4-02 305D 2X 21510M 4.6% 992F 3.6% 768P DHIR



Morning Star L Kearstin J GP-84 @ 2-02
 1-09 365D 2X 16,130M 4.6% 748F 3.4% 541P
 Dam of Lot 21

LOT 21 4 #1 ANDRE OR JAMES DEAN X KEARSTIN J IVF EMBRYOS

Breeder & Owner: Owner: KRSTANOVIC PEYTON ALEXIS
FAIRFIELD PA
301.401.4673 mkrstanovic@wgwelchllc.com

- Four (4) #1 IVF embryos
- Buyer's choice of sire - can mix or match
- Sexed semen used for Females
- Resulting calves will be A2A2 by parentage
- Located at TransOva, Maryland
- Embryos must be in buyer's possession within 60 days of sale

Sire choice 1:

SNIDERS NICLEY NOVAK ANDRE USA000097011822 54GU519 A2A2
 08/24 USDA GPTA +1311M -0.16% +30F -0.04% +37P
 -2.2DPR +1.0PL +320NM\$ 84NM%ile +319CM\$ 60% Rel
 2.95SCS -2.50HCR 36% Rel -3.60CCR 41% Rel
 -0.60LIV 36% Rel 0.80GL 43% Rel 0.20EFC 37% Rel
 AGA 08/24 PTAT +1.1 +1.0UDC +1.4FLC 58%Rel PTI +92

Sire choice 2:

SPRINGHILL JAMES DEAN-ETV 840003151591428 551GU911 A2A2
 08/24 USDA GPTA -519M +0.15% +1F +0.10% +0P
 -1.1DPR +1.6PL +50NM\$ 23NM%ile +62CM\$ 82% Rel
 2.89SCS -1.90HCR 45% Rel -2.70CCR 43% Rel
 1.20LIV 39% Rel 1.10GL 70% Rel -4.50EFC 32% Rel
 AGA 08/24 PTAT +0.9 +1.4UDC +1.6FLC 77%Rel PTI +32

MORNING STAR L KEARSTIN J USA000097013105 A2A2

08/24 USDA GPTA -383M +0.03% -12F +0.02% -10P
 +1.7DPR -1.6PL -170NM\$ 5NM%ile -169CM\$ 57% Rel
 3.01SCS 0.60HCR 33% Rel 2.00CCR 42% Rel
 0.90LIV 36% Rel -0.80GL 42% Rel -0.90EFC 37% Rel
 1 Rec YDev: +925M +32F +24P
 1 App 08/24 PTAT +0.1 +0.6UDR +0.7FLC 56%Rel CPI -5
 Appraisal: +84 @ 2-02 (VV+++)
 1-09 365D 2X 16130M 4.6% 748F 3.4% 541P DHIA

MARODORE T LES LIGHTNING-ET USA000068029818 7GU445 A2A2

08/24 USDA GPTA +299M +0.08% +27F +0.02% +13P
 -3.2DPR -3.2PL -87NM\$ 7NM%ile -89CM\$ 94% Rel
 3.19SCS -1.80HCR 53% Rel -3.50CCR 77% Rel
 -3.30LIV 54% Rel 0.00GL 98% Rel -1.80EFC 59% Rel
 AGA 08/24 PTAT +0.7 +0.8UDC +0.9FLC 92%Rel PTI +31

MORNING STAR KARLEE J USA000078006344

Appraisal: VG 87 @ 5-09 (VV+VV)
 1st Four-Year-Old Spring Dairy Expo 2019
 Dtr: MORNING STAR KAYCEE J 86 @ 3-03 (85/86)
 Reserve Junior Champion Spring Dairy Expo Jr. Show 2019

3D: MORNING STAR MM KAYDEE J USA000068038698

Appraisal: 85 @ 2-03 (85/83)
 Honorable Mention Junior All-American Spring Calf 2013

4D: GR-SILKYWAY MURRY NAOMI J USA000068042170

Appraisal: 90 @ 4-01 (90/90)
 3-09 365D 2X 34150M 4.2% 1441F 3.1% 1060P 97



Morning Star MM Kaydee J VG-85 @ 2-03

HM Jr. All-American Spring Calf 2013
 3rd Dam of Lot 21



Misty Meadows Pilot Sequoia-ETV VG-88

Res. Grand Champion Iowa State Fair 2022
Dam of Lot 22



Misty Meadows Levi Suede-ET EX-94

Unanimous All-American Jr. Three-Year-Old 2014
Maternal Sister to Dam of Lot 22

LOT 22 5 #1 MICHELANGELO X SEQUOIA IVF EMBRYOS

Breeder: HETKE ANDREW, CLIFFE JACK, ENDRES TYLER
REEDSBURG WI
Owner: NC MTN CATTLE CO
ENNICE NC
336.363.4639 atompkin@vt.edu

- Five (5) #1 IVF embryos
- Sexed semen used for Females
- Resulting calves will be A2A2 by parentage
- Located in Loganville, WI
- Embryos must be in buyer's possession within 60 days of sale

GLADHEART MICHELANGELO-ET 840003206246837 54GU502 A2A2

08/24 USDA GPTA +532M -0.10% +6F -0.01% +16P
-2.1DPR -1.1PL -31NM\$ 7NM%ile -32CM\$ 76% Rel
3.06SCS -1.20HCR 40% Rel -2.20CCR 45% Rel
-3.40LIV 42% Rel 1.00GL 72% Rel 2.60EFC 37% Rel
AGA 08/24 PTAT +0.6 +0.5UDC +0.6FLC 72%Rel PTI +19

LINDRIAN GRUMPY PILOT-ET CAN000011632409 200GU307 A2A2

08/24 USDA GPTA -288M +0.10% +4F +0.07% +2P
+0.0DPR +0.7PL +107NM\$ 30NM%ile +119CM\$ 90% Rel
2.72SCS 0.10HCR 50% Rel 0.50CCR 69% Rel
1.70LIV 48% Rel 2.50GL 92% Rel -0.30EFC 51% Rel
AGA 08/24 PTAT +0.6 +1.5UDC +1.0FLC 86%Rel PTI +38

MISTY MEADOWS PILOT SEQUOIA-ETV USA000097008540 A2A2

PA: -604M +0.14% -5F +0.07% -9P +4CM\$ -2NM\$
+0.6PTAT +1.0UDC +0.0FLC +1.4DPR +0.9PL +8CPI 3.00SCS
3 App 08/24 PTAT +0.6 +1.0UDR +0.0FLC 41%Rel
Appraisal: VG 88 @ 4-05 (VVVVE)
Reserve Grand Champion Iowa State Fair 2022
1st Jr. Three-Year-Old Southwest WI Protein Show 2022

MISTY MEADOWS ARCHIE SIS USA000068017104

Appraisal: 92 @ 4-06 (91/92)
2-02 334D 2X 12830M 5.2% 665F 3.6% 457P DHIA
3-03 308D 2X 15180M 5.2% 787F 3.5% 535P 97
4-03 365D 2X 18071M 5.2% 936F 3.7% 663P DHIA
Honorable Mention All-American Winter Calf 2007
Nominated All-American Winter Yearling 2008
Nominated All-American Sr. Three-Year-Old 2010
Dtrs: MISTY MEADOWS LEVI SAPPHIRE-ET 85 @ 3-03 (84/83)
MISTY MEADOWS LEVI SEYBERT-ET 90 @ 4-04 (91/89)
4-00 365D 2X 21650M 5.2% 1119F 3.3% 717P DHIA
MISTY MEADOWS LEVI SIENNA-ET 88 @ 4-04 (88/89)
3-10 365D 2X 21810M 4.5% 973F 3.5% 758P DHIA
Reserve All-American 2013 & 2015
MISTY MEADOWS LEVI SUEDE-ET 94 @ 6-01 (93/93)
2-11 324D 2X 20130M 4.7% 954F 3.3% 663P 94
Unanimous All-American Junior Three-Year-Old 2015
MISTY MEADOWS GRUMPY SWITCH-ET 86 @ 5-03 (86/86)
MISTY MEADOWS PILOT SYCAMORE-ETV 88 @ 5-00 (88/88)
3-01 353D 2X 20270M 4.8% 977F 3.5% 718P 96
MISTY MEADOWS GG HP SCARLET-ETV 91 @ 4-07 (92/90)
3-11 365D 2X 27130M 3.8% 1037F 3.2% 869P DHIA

3D: MISTY MEADOWS JAYCOB SANDY USA000003066744

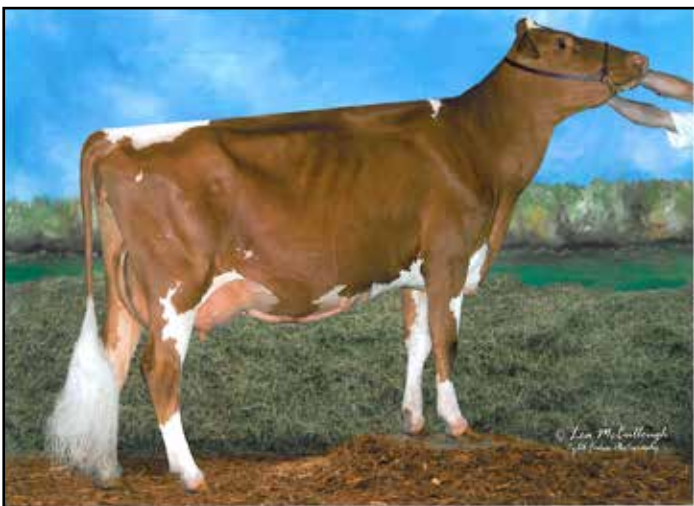
Appraisal: 89 @ 5-11 (87/91)
3-07 349D 2X 18390M 4.8% 883F 3.3% 606P 94
2326D 109960M 4.8% 5244F 3.3% 3628P LIFE

4D: MISTY MEADOWS ENHANCER SOUSA USA000003042690

Appraisal: 87 @ 3-07
3-04 326D 2X 18360M 4.1% 747F 3.5% 636P DHIA
Reserve All-American Winter Yearling 1997

5D: LISETER FARM FRANKS SUSSIE USA000003012900

Appraisal: 88 @ 4-07
All-American Fall Calf 1993



Misty Meadows Archie Sis EX-92

Three-Time All-American Nominee
Granddam of Lot 22

SEMEN LOTS

S23 5 UNITS OF 514GU116 COULEE CREST RICHARD CHECKMATE **SEXED** A2A2
#1 Proven PTI Bull - August 2024!
Consigned by Guernsey Gold Sires, Columbus, OH

S24 5 UNITS OF 514GU116 COULEE CREST RICHARD CHECKMATE **SEXED** A2A2
#1 Proven PTI Bull - August 2024!
Consigned by Guernsey Gold Sires, Columbus, OH

S25 2 UNITS OF 594GU959 HI GUERN VIEW LEVI DRONE **SEXED** A2A2
Consigned by Marodore Farm, Baltimore, OH *Can be delivered to NAILE, Louisville*

S26 3 UNITS OF 514GU124 SPRINGHILL JUNGLE **SEXED** A2A2
Consigned by Levi Plocher, Salem, OH

S27 5 UNITS OF 7GU437 SPRINGHILL JACKPOT-ET A2A2
Consigned by Levi Plocher, Salem, OH

S28 5 UNITS OF 31GU616 VILLA CREST MONARCH A2A2
Consigned by Levi Plocher, Salem, OH

S29 5 UNITS OF 31GU619 FARIA FARMS MESSENGER A2A2
Consigned by Levi Plocher, Salem, OH

S30 5 UNITS OF 120GU2926 MAR RAL MARTHAS KAISER A2A2
Consigned by Levi Plocher, Salem, OH

S31 5 UNITS OF 54GU463 VALLEVIEW POLLED FUTURE-P HOMOZYGOUS POLLED
Consigned by Levi Plocher, Salem, OH

S32 5 UNITS OF 1GU343 FUTURISTIC FRANK SENTRY-ET
Consigned by Levi Plocher, Salem, OH

S33 10 UNITS OF 6GU114 SPRINGHILL JC PENNEY-ET A2A2
Consigned by Springhill, Big Prairie, OH *Located in the GMS tank, Columbus, OH*

Registering Embryo Calves with the American Guernsey Association

New Guernsey Owners

- Visit www.usguernsey.com to learn about membership with the American Guernsey Association. Membership is not required to register calves, but will reduce your registration fees!
- Calf registration can be done online at www.usguernsey.com or using paper forms - contact the office if you desire paper forms.
- It is recommended to contact AGA prior to registration to obtain an owner number.

Requirements of registration

- All donor dams **MUST** be DNA tested. For embryos made after May 2017, donor dams must have been genomic tested. Be sure to ask the consignor about the dam's DNA status before submitting registrations.
- As with any calf registration, you must have the complete registration number and name of both the sire and dam of the calf.
- You must specify who the owner is of each calf registered.
- The prefix of the breeder of the calf is required to start its registered name.
- The AGA does not require any veterinary paperwork to be submitted before registration; although AGA reserves the right to request paperwork if deemed necessary.

Foreign Registration

Each country association has its own rules for embryo registration. Buyers should check with their respective association to see what paperwork and DNA requirements need met. Foreign buyers without a home association could be eligible for AGA registration. Contact the office directly to inquire. AGA will not register calves for buyers with a Guernsey registration association within their country.

